

Historic, Archive Document

Do not assume content reflects current scientific knowledge, policies, or practices.



*Gill's - Miss Liberty
Dahlia*

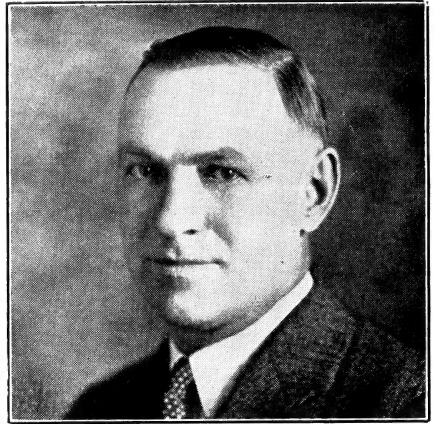
GILL BROS.

SEED CO.

1 9 4 2



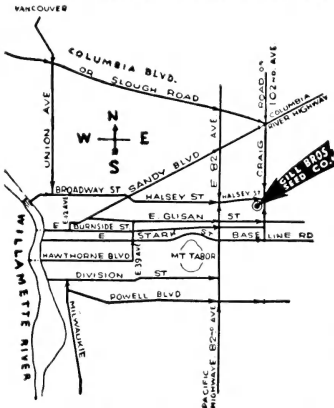
EDW. E. GILL



RAY W. GILL

HOW TO REACH THE FARM

Retail salesrooms at warehouse and office.



Take 90th Avenue street car on Montavilla line to 90th Avenue, thence six blocks east and four north to farm.

By auto to 82nd Avenue or 102nd Avenue thence to Halsey Street.

Office and farm at 99th Avenue and Halsey (See diagram map).

Visitors are always welcome at our farm. Dahlia gardens are at their best in September and October.

PERENNIAL

ROCK GARDEN COLLECTION

We offer 12 packets of rock garden perennials, worth \$1.55 for \$1.00, postpaid.

ALYSSUM, Saxatile Compactum, yellow.....	.10
ANEMONE, Pulsatilla, purple.....	.15
ARMERIA, Formosa Hybrids, pink and rose shades.....	.10
AUBRIETIA, Large Flowering Hybrids, mixed.....	.15
CERASTIUM, Snow in Summer.....	.10
DIANTHUS, Double Dwarf Clove, mixed.....	.10
HELIANTHEMUM (Sun Rose) Mutabile, mixed.....	.10
LINUM, Flavam, yellow.....	.15
PRIMULA, Auricula, mixed.....	.15
TUNICA, Saxifraga, rose.....	.10
VIOLA, Jersey Gem.....	.25
WALLFLOWER, Siberian, orange.....	.10

\$1.55

FREE BULLETINS

We offer free on request the following bulletins written by Ray W. Gill: Lawn Culture, Dahlia Culture, Fall Gardens, Fertilizers and How to Use Them.

GIANT ZINNIA COLLECTION

We offer ten packets named Dahlia Flowered and Monster type Zinnias, our selection, each a different variety and worth \$1.00 for 60c postpaid.

CHRYSANTHEMUM PLANTS

Ready during April and May

LARGE VARIETIES

Rooted Slips 25c each, \$2.50 per dozen postpaid.

ANGELO, Early, large, pink incurve.
BRONZE WAITE (Wm.), Exhibition, orange bronze.
CHARLESTON, Bronze, irregular incurve, hooked petals.

CHRYSALORA, Yellow, incurve.
HILDA BERGEN, Commercial, mahogany incurve.
INDIANOLA, Commercial, bronze with gold, incurve.

KING ALFRED, Large, white shaded pink, incurve.
LUSCIOUS, Exhibition, rosy purple, loose incurve.
MCKINLEY, Yellow spider.

MRS. H. E. KIDDER, Commercial, golden incurve.
MRS. HELEN K. JOHNSON, Deep yellow incurve, irregular petals.

NORMA, Pink and cream anemone.
OREGONIAN, Early, large lavender incurve.
RAYONNANTE, Spider, pink cord like petals.
RED WAITE, Exhibition, red-gold.

ROSE GRAF, Pink anemone.
SILVER SHEEN, Commercial, large white incurve.
THE BIG CHILD, Exhibition, yellow incurve.
THE TITAN, Scarlet anemone.

WM. TURNER, Exhibition, white incurve.
YELLOW TURNER, Exhibition, yellow incurve.

SMALL VARIETIES

Rooted Slips, 15c each, \$1.50 per dozen postpaid.

BRONZE SOURCE D'OR, Deep orange, aster type.
GARNET GEM, Garnet red.
ROSE CHOCHARD, Early lavender, silver sheen.

MRS. E. D. GODFREY, Single, rose pink, late.
WHITE DOTY, Medium white pompon.

CUSHION MUMS

Rooted Slips 15c each, \$1.50 per dozen postpaid. (except as noted)

PINK CUSHION OR AZALEAMUM
BRONZE CUSHION WHITE CUSHION
RED CUSHION

HARVEST GOLD CUSHION, 25c each, \$2.50 per dozen postpaid.

Write for pamphlet of CULTURAL DIRECTIONS.

HOME BEAUTIFUL SWEET PEAS

Twelve regular sized packets of Spencer Sweet Peas, our selection of varieties, all different, worth \$1.20, sent postpaid for 70c. Six packets, postpaid for 35c. These will be chosen to give a good range of color.

Thirty-second Annual Catalog

Gill Bros. Seed Company

MONTEVILLA STATION, PORTLAND, ORE.,
Main Office, Farm and Retail Store
N. E. 99th Ave. and Halsey St. Tabor 1173

BRANCH RETAIL STORE
832 S. W. 4th Avenue, near Yamhill Street
Portland, Oregon

Dear Customers and Readers:

This is not a large, pretentious catalog, yet it brings you an honest message about seeds, bulbs, etc. The high quality of our goods is favorably known throughout the Northwest, besides which we have many customers throughout the nation. For years we have been introducing special strains of seeds here on our own farms and many new varieties of our own origin are recognized as leaders by market gardeners.

We specialize in Northwest grown seeds and where these are not obtainable we procure the best without regard to cost from the world's best growers. Seeds grown in moderate summer and winter conditions of the Northwest have great vitality and vigor. Northwest grown seeds are indicated in this catalog with a star. If you have not tried our seeds, please give us a trial order. Many of the largest growers and associations in the Northwest depend on our goods. Order early, as some varieties are short.

Our catalog has been prepared with the desire to have it sensible and free from exaggeration. The cuts used are practically all made from photographs taken from samples grown by ourselves and are reasonable illustrations of the results obtained from our seeds. We are opposed to filling our catalog with a long list of worthless novelties and are confining our list to the fewest possible varieties, and introducing only those new sorts which have some added value over other introductions. Those who receive more than one copy of our catalog will confer a favor by handing it to someone interested.

Our files show us the names of all who have sent us an order. To these we mail our catalog each year, and we also mail our catalog again to all who have received our catalog the first time last season, regardless whether they sent us an order or not. However, we will send catalogs free upon request. All members of a family should order under one name.

OUR WARRANTY

We believe our seeds, plants and bulbs to be of good germination, healthy and true to name. However, should they prove otherwise, we agree to replace the goods or refund the purchase price thereof. Beyond such replacement we assume no liability whatsoever and will not be responsible for the crop. GILL BROS. SEED CO.

MISTAKES

Like all human beings, we are apt to make mistakes, and if an error occurs we will consider it a favor to be notified at once so that we can rectify the oversight.

If you have a complaint, tell us first. In the rush of spring business, mistakes may happen; if so, tell us pleasantly about it and be assured of courteous treatment.

SUBSTITUTION

IN VIEW OF THE FACT THAT SOME KINDS OF SEEDS ARE SHORT THIS YEAR, we would suggest that customers give as much as possible their permission for us to substitute the nearest variety to the one ordered in case we should be sold out. On items of small importance, or during the planting season, when time is precious, we may occasionally send other sorts if out of the ones ordered, but such substitutions may be returned for credit if unsatisfactory to the purchaser.

VEGETABLE SEED SUBJECT TO CHANGE IN EXTREME CASES

We expect to be able to maintain the prices quoted in this catalog, but owing to constantly changing conditions, disturbing replacement values, we must reserve the right to make advances on such items as might otherwise be sold at a loss.

HELPFUL SUGGESTIONS

We are always willing to offer any assistance in our power regarding culture, best varieties for your soil and market, etc. We will also be glad to consider any suggestions you may wish to make to us.

HOW TO ORDER

Order early, as there is a heavy demand on some stocks and they may be exhausted. Remittance must accompany your order. Stamps are accepted up to \$1.00. Money Orders, Express Orders, Bank Drafts and Certified Checks are preferred, although other checks are accepted for collection. Prices in this catalog marked "Not Prepaid" do not cover shipping expenses. Except where noted "Not Prepaid," all prices are postpaid. All prices up to and including one pound include shipping expenses and for more only when indicated. Give shipping instructions and write your name and address plainly on your order. Write your correspondence on a separate sheet from your order. The seed season is a rush season.

SAVE MONEY BY PARCEL POST. PLEASE READ

In ordering seeds in quantity you can save money by using our prices, marked "Not Prepaid" in this catalog. Simply add postage to these prices at the zone rate. In case you do not know the zone to Portland, simply include extra and mark order "postage allowance." Any overrun will be refunded to you.

PRACTICAL EXPERIENCE

As market gardeners and the many tests we have made for years, has given us a thorough knowledge of the varieties best suited for our climate, and aside from those varieties which we grow, has enabled us to secure our seed from the best sources. In that respect we differ from the average seed store where the experience is more from a selling standpoint.

WE SPECIALIZE IN MARKET GARDENER TRADE

Thousands of market gardeners all over the United States look to us for high-grade seeds. If you buy in quantities, write us a list giving variety and quantity and we will be glad to quote our gardener rates.

VEGETABLES

ARTICHOKE

LARGE GREEN GLOBE—The green buds are used. Start in hotbeds. They can be grown successfully in the Northwest. Postpaid. Pkt. 10c; oz. 60c.

PLANTS—Postpaid. 25c each; 3 for 60c; doz. \$2.00. Ready after March 1st.

***JERUSALEM**—The tubers are used for stock feed. Postpaid. 3 lbs. 50c. Not prepaid. 100 lbs. @ \$2.25.

ASPARAGUS

CULTURE—The seed is of slow germination and should be planted early in the season. Plant roots in well drained soil about 2 feet apart in the row and five to six feet between rows.

MARY WASHINGTON—Large, heavy yielding with large green stalks of fine quality. Practically immune to rust and other diseases. We carry a special selected strain. Postpaid. Pkt. 5c; oz. 20c; 1 lb. 35c; lb. \$1.00.

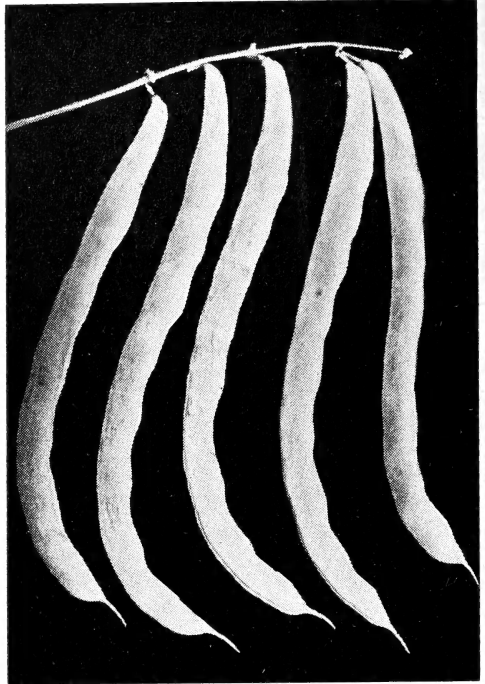
PARADISE—This new variety has the same rich green color and deliciously mild flavor as Mary Washington. It is very early, also resistant to rust and a much heavier yielder. Postpaid. Pkt. 10c; oz. 45c; 1 lb. \$1.50; lb. \$4.50.

ASPARAGUS ROOTS

MARY WASHINGTON — (No. 1). Postpaid. Doz. 50c; 50 @ \$1.00; 100 @ \$1.50. Not prepaid, 1000 @ \$7.00; 3000 or more @ \$6.50.

PARADISE — (No. 1). Postpaid. Doz. 75c; 50 @ \$1.75; 100 @ \$2.50.

Northwest grown seeds are indicated in this catalog with a star (*). Quality, not price is the first consideration in buying seed. Considering quality, our prices are reasonable.



Beans, Gill's Delicious Giant

BUSH BEANS

CULTURE—Plant about May 1st for early beans, or as soon as the ground becomes warm, in rows 3 feet apart. Cover from 1½ to 3 inches deep according to weather conditions. Large seeded beans require warmer weather to germinate than small beans. Never cultivate or hoe beans when the foliage is wet from dew or rains, as it will cause rust. Inoculate all legumes with NITRAGEN, see page 16.

PRICES—Unless noted are uniformly: Postpaid. Pkt. 10c; ½ lb. 20c; lb. 35c. Not prepaid, lb. 25c; 5 lbs. of one variety @ 20c lb. Write for prices on larger quantities.

DWARF KENTUCKY WONDER—(The Commodore). Green pods of excellent quality, measuring 7 to 9 inches; nearly straight, very fleshy, brittle and of fine texture, fibreless and stringless in all stages of growth. Desirable for the home garden as well as market. Postpaid. Pkt. 15c.

***ROUND POD KIDNEY WAX** or Brittle Wax—Extra early; very vigorous and productive. Long, straight, round pods that are entirely stringless. One of the finest for canning and home use.

***PENCIL POD BLACK WAX**—Hardy and prolific and of finest quality. The pods are bright waxy yellow, long and round and entirely free from strings. Desirable for home or market and very valuable for canning.

***SURE CROP WAX**—Very productive, stringless sort with pods six inches long, nearly round and of fine quality. The pods are long and straight, making a fine bean for market gardeners.

***STRINGLESS BLACK VALENTINE**—Very hardy; extremely early, withstanding cold, damp weather better than most sorts. Pods dark green, long, straight, stringless, nearly round. Excellent quality.

***IMPROVED BURPEE'S STRINGLESS GREEN POD**—Considered the best early bush bean. The pods are green, of good length, entirely stringless tender and brittle and remain so until ripe. This brown-seeded bean is both early and hardy and one of the richest flavored beans of all. A popular market or garden bean and desirable for canning.

***GIANT STRINGLESS**—Long, stringless, green pods. A few days later than Burpee's Stringless but more productive and with longer, straighter pods. The pods are large and nearly round.

***TENDERGREEN**—Plants medium large, erect, heavily productive. Pods nearly straight, dark green, round, meaty, absolutely stringless and of outstanding quality.

***GILL'S RELIABLE**—A pioneer bean found under various names throughout the Northwest. We have grown it in our family for over forty years. It is remarkably prolific and hardy, having few superiors, either as a string or dry bean. The pods are green and the seed pure white. Unless picked very young, the pods need stringing. Fine for canning and a good all around bean.

***STRINGLESS REFUGEE**—Popular for canning.

Prices in this catalog marked "not prepaid" do not cover shipping expenses. When ordering several pounds it will be cheaper to use these prices, sending extra for postage.

Pole Beans

See bean prices on preceding page.

***GILL'S DELICIOUS GIANT**—In this cross between Oregon Giant and Kentucky Wonder, we have originated a variety twice as productive as Oregon Giant, of better quality—and we believe the easiest bean of all to pick. The beans are produced in clusters of 4 to 6, the stems of which protrude outside the foliage. The pods are green, faintly striped with red lines which disappear when cooked. If you like green beans fresh for the table or for canning, do not fail to order this. Postpaid. Pkt. 10c; $\frac{1}{2}$ lb. 20c; lb. 35c.

***OREGON GIANT**—Giant pods a foot long; light green striped carmine. This wonderful bean is now sold by market gardeners at high prices. The quality is good even in the largest beans. Seed supply limited. Postpaid. Pkt. 10c; $\frac{1}{2}$ lb. 30c; lb. 50c.

***BLUE VICTOR**—Vines similar to Kentucky Wonder with large pods of purple blue. When cooked they lose the purple color and are a rich green. Fibreless and of excellent quality. Splendid for exhibition purposes. Postpaid. Pkt. 15c; $\frac{1}{2}$ lb. 40c.

***BLUE LAKE** or White Creaseback—Medium long, straight green pods. Heavy yielding, excellent quality. Popular for home and market garden, and for canning.

***KENTUCKY WONDER**—A standard variety often called Asparagus Bean. It produces exceptional yields of long, green pods of fine quality. We carry a true strain from careful selection.

***WHITE SEEDED KENTUCKY WONDER**—Many gardeners prefer this to Kentucky Wonder. Earlier, more productive, stringless and good quality.

***KENTUCKY WONDER WAX**—Vigorous and productive. Pods waxy yellow, large, stringless and of excellent quality.

SHELL BEANS

***OREGON LIMA**—A large pole lima, extra early and suited for Northwest culture. It is acclimated and matures ripe pods 75 days from planting. Excellent used as a butter bean or stored dry for winter use. Large, pure white seed. Postpaid. Pkt. 10c; $\frac{1}{2}$ lb. 25c; lb. 40c.

***LONDON HORTICULTURAL (Cranberry)**—Pods green streaked with red. Excellent used green, shelled or dry.

***DWARF HORTICULTURAL (Cranberry)**—A rich flavored early bush bean generally used as a green shell bean; vigorous and prolific. Bean and pod striped and blotched red.

***BABY POTATO LIMA**—A thick, but small seeded lima of early maturity. Pods average over three beans to the pod. Seeds are bright green at fresh eating stage, turning creamy white at maturity. Valuable for home garden, canning and quick freezing. Postpaid. Pkt. 10c; $\frac{1}{2}$ lb. 25c; lb. 40c.

***HENDERSON'S BUSH (Baby Lima)**—Early and heavily productive. Thrives in ordinary soil. Splendid quality. Popular for canning.

***BURPEE'S BUSH LIMA**—Large seeded; very productive. Postpaid. Pkt. 10c; $\frac{1}{2}$ lb. 25c; lb. 40c.

***FORDHOOK LIMA**—Potato Lima type. Plants large and very productive. Postpaid. Pkt. 10c; $\frac{1}{2}$ lb. 25c; lb. 40c.

***WHITE NAVY**—Heavily productive, small oval white bean. Best known commercial variety.

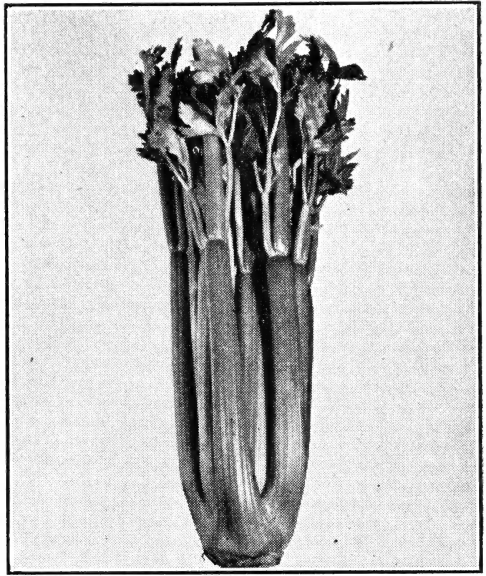
***GREAT NORTHERN**—White beans, larger than Navy. Hardy and heavy yielding.

***RED KIDNEY**—Easily grown. Excellent quality.

CELERY CABBAGE

***WONG BOK PAOTING**—A delicious vegetable from China, excellent for salads and cold slaw, and is sometimes used like Swiss Chard. The stems can be used like celery. For best results plant seed August 1st and thin to 18 inches apart. Use plenty of Garden Grow fertilizer to secure a quick, strong growth. Postpaid. Pkt. 10c; oz. 35c; $\frac{1}{2}$ lb. \$1.00; lb. \$3.50.

***PEKIN**—Grows long slender heads, solid and tender. This is a very fine variety. Postpaid. Pkt. 10c; oz. 35c; $\frac{1}{2}$ lb. \$1.00; lb. \$3.50.



Celery, Utah Jumbo

Celery

UTAH JUMBO—This remarkable late celery is the finest quality of any we have ever tried. Grown extensively near Salt Lake and wherever shipped commands high prices. Plants sturdy, compact and solid. Very free from strings. In Utah, soil bleaching is generally used, producing stalks that are pure white, nutty and crisp. Also immensely popular sold green without bleaching. Postpaid. Pkt. 10c; $\frac{1}{2}$ oz. 35c; oz. \$1.00; $\frac{1}{2}$ lb. \$3.50.

TALL UTAH—Stalks grow considerably taller and more slender than Utah Jumbo. Bunches not quite as heavy. Postpaid. Pkt. 10c; $\frac{1}{2}$ oz. 35c; oz. \$1.00; $\frac{1}{2}$ lb. \$3.50.

GOLDEN SELF BLANCHING TALL STRAIN—The plants grow very tall and weigh very heavy. The stalks are wide and rather flat, while the quality is extra fine. This strain is very early and especially valuable in dry climates. Postpaid. Pkt. 10c; oz. \$1.00; $\frac{1}{2}$ lb. \$3.50.

GOLDEN PLUME SPECIAL—A cross between Easy Blanching and Golden Self Blanching that is very hardy and unusually free from blight. We carry a fine strain that is popular with gardeners. Postpaid. Pkt. 10c; $\frac{1}{2}$ oz. 40c; oz. 70c; $\frac{1}{2}$ lb. \$2.00.

CELERIC AC or TURNIP ROOTED CELERY, SPECIAL STRAIN—The roots are turnip shaped and are used for soups and stews. They are very hardy and will stand in the open all winter in the Coast regions. Postpaid. Pkt. 10c; oz. 75c; $\frac{1}{2}$ lb. \$2.00.

SWISS CHARD

RHUBARB CHARD—A new Swiss Chard that looks like Rhubarb. Stalks bright crimson, leaves dark green. Try this different, tasty and delicious new vegetable. Pkt. 50 seeds 15c.

FORDHOOK GIANT—Larger, darker green and more crinkled leaves than Lucullus. Stalks white. Outstanding for size and quality. Postpaid. Pkt. 10c; oz. 25c; $\frac{1}{2}$ lb. 70c; lb. \$2.00.

LUCULLUS—Grows about two and a half feet high. The heavy stalks are over an inch thick and bare for more than a foot of their length. Should be served as you would asparagus. The leaves make the finest "greens." Swiss Chard is hardy, easily grown, and should be in every garden. Postpaid. Pkt. 10c; oz. 25c; $\frac{1}{2}$ lb. 70c; lb. \$2.00.

Table Beets

CULTURE—Plant in rows 3 feet apart, with drill, April 1st to July 15th. Thin to 3 or 4 inches apart for table beets and 8 to 12 inches for mangels. For winter beets the latest sowing is best.

PRICES—Unless noted are uniformly: Postpaid. Pkt. 10c; oz. 25c; $\frac{1}{2}$ lb. 60c; lb. \$1.75.

EARLY BEAUTY—A perfectly round, fast growing and rich dark red beet. Roots are smooth and uniform in size with slender tap roots. Tops are medium, just right for bunching.

***EARLY WONDER**—A deep blood red beet, nearly globe shaped, with small clean tap roots and small erect tops. One of the earliest and most uniform bunching beets that can be grown and also very fine for late planting. They mature very even and will stand closer planting than most sorts.

EARLY MODEL—The best all around table beet for home or market. It is extremely early, of smooth, uniform shape. The flesh is dark red, entirely free from strings or core and unusually sweet. We offer a selected strain. Pkt. 10c; oz. 20c; $\frac{1}{2}$ lb. 45c; lb. \$1.25.

***EXTRA EARLY EGYPTIAN SPECIAL**—This strain has had our personal selection and produces extra early beets with small leaves and small tap roots. The roots are of rather flattened shape and the flesh is dark blood red and of finest quality.

***DETROIT DARK RED SPECIAL**—Splendid for market or home garden and popular with canneries. Roots nearly round, very uniform and of medium size; flesh tender and blood red. We carry an extra select strain. The best canning beet. The outstanding beet for high quality.

STRAWBERRY CROSBY—Extremely early with roots more globe shaped than the old Egyptian. Flesh very tender and sweet and rich vermilion red. The exterior color is strawberry red.

MANGEL BEETS

PRICES ON MANGELS UNIFORMLY: Postpaid. Pkt. 5c; oz. 20c; $\frac{1}{2}$ lb. 50c; lb. \$1.50.

DANISH SLUDSTRUP—Long, reddish-yellow; grows well above the ground and is easy to pull.

GIANT HALF SUGAR—Cross between a mangel and sugar beet. Flesh white and exceedingly rich.

GIANT YELLOW ECKENDORF—Giant, smooth, long roots of cylindrical shape, weighing up to 20 pounds each and growing two-thirds above ground. Solid white flesh with high food value.

MAMMOTH LONG RED—Selected strain of this old favorite. Heavy cropper.

MONEY MAKER—Most resistant to frost of any. White exterior skin; white flesh. Long roots partly out of ground.

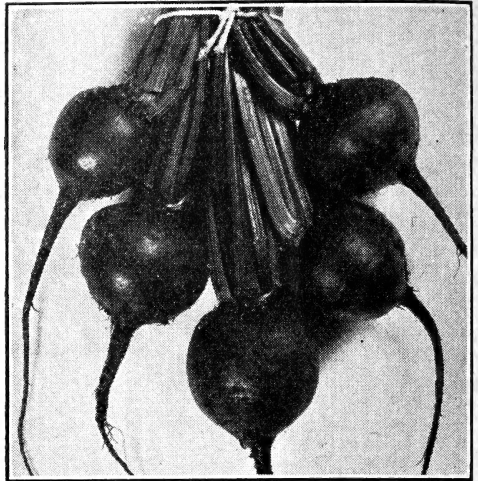
KLEIN WANZLEBEN, "Sugar Beet"—The best for making sugar. Write your agricultural college for instructions. It is also valuable for feeding purposes. Postpaid.

BRUSSELS SPROUTS

***NEW E. K. SPECIAL**—Exceptionally early, sure heading variety of the Long Island type. Good sized, solid heads, produced the full length of the stalk. Postpaid. Pkt. 15c; oz. \$3.00; $\frac{1}{2}$ lb. \$8.00; lb. \$20.00.

LONG ISLAND—Plants of medium height, producing a good yield of close, compact heads. Recommended for market gardeners. Postpaid. Pkt. 10c; oz. 50c; $\frac{1}{2}$ lb. \$1.35; lb. \$4.00.

***ULRICH'S AMERICAN SOLID**—Dark green heads of sweet, rich flavor. Will stand more frost than other varieties. The tight formation prevents the entering of bugs. Postpaid. Pkt. 10c; oz. 85c; $\frac{1}{2}$ lb. \$2.50; lb. \$8.00.



Beet, Detroit Dark Red Special

CHICORY

LARGE ROOTED—Chicory does well in this climate and is an excellent substitute for coffee. Plant like carrots. Postpaid. Pkt. 10c; oz. 65c; $\frac{1}{2}$ lb. \$2.00.

WITLOOF or FRENCH ENDIVE—The roots are transplanted and the shoots are bleached for winter use as a salad. Postpaid. Pkt. 10c; oz. 65c; $\frac{1}{2}$ lb. \$2.00.

CARDOON

LARGE SMOOTH—A perennial winter vegetable grown for the fleshy leaf stalks which are blanched like celery. Used for salads, or in soups. Postpaid. Pkt. 10c; oz. 40c; $\frac{1}{2}$ lb. \$1.00.

CRESS

FINE CURLED (PEPPER GRASS)—Grows quickly from seed. Sow thinly in drills. Should be planted at intervals as it runs to seed quickly. Postpaid. Pkt. 10c; oz. 45c; $\frac{1}{2}$ lb. \$1.00.

WATER CRESS—Perennial aquatic plant with long stems and quite broad thick leaves; spicy flavor. Desirable for salads and attractive as a garnish. Postpaid. Pkt. 10c.

DANDELION

IMPROVED THICK LEAVED—Far superior to the uncultivated plant. Postpaid. Pkt. 10c; oz. 65c.

ENDIVE

Culture similar to lettuce. The outer leaves should be tied over the head to bleach.

LARGE GREEN CURLED—One of the best sorts. Postpaid. Pkt. 10c; oz. 25c; $\frac{1}{2}$ lb. 75c.

BATAVIAN BROAD LEAVED—Frequently called Escarolle. Postpaid. Pkt. 10c; oz. 25c; $\frac{1}{2}$ lb. 75c.

EGG PLANT

Start in hot beds like tomatoes. Set $2\frac{1}{2}$ feet in the rows and 3 feet between.

BLACK BEAUTY—The earliest and best of the large fruited varieties. Color rich, lustrous purplish black. Postpaid. Pkt. 10c; $\frac{1}{2}$ oz. 40c; oz. 75c; $\frac{1}{2}$ lb. \$2.25.

CABBAGE

CULTURE—Early varieties should be sown in the open ground in early September or in cold frame in January or February. We do not recommend sowing in hotbed as plants will be too tender. For earliest cabbage, transplant fall sown plants in late October or early November. For late, sow seed in open ground May 1st, transplant June 15 for fall, and July 1st to 20th for winter cabbage, in rows $3\frac{1}{2}$ feet apart, from 25 to 36 inches in the row, according to the richness of the soil, size and variety. Do not crowd them. They do best in rich, loamy soil, fertilized with barnyard manure of any kind and apply Garden Grow fertilizer as directed. Early Jersey Wakefield, Large Wakefield, All Head Early, Danish Roundhead and Oregon Ballhead can be sown in the fall for spring and summer cutting. They seldom run to seed. Golden Acre, Copenhagen Market and Glory of Enkhuizen will not winter over.

PRICES—Unless noted are uniformly: Postpaid, Pkt. 10c; oz. 45c; $\frac{1}{2}$ lb. \$1.25; lb. \$4.00.

GOLDEN ACRE—An extra early round-headed fine quality cabbage, maturing with Early Jersey Wakefield. The heads are firm with few outer leaves and average about four pounds. Postpaid, Pkt. 10c; oz. 50c; $\frac{1}{2}$ lb. \$1.50; lb. \$5.00.

LOUISIANA COPENHAGEN—Matures about one week earlier than Copenhagen market. Medium sized heads; very compact and of excellent quality.

COPENHAGEN MARKET—Good sized, round heads, maturing with Large Wakefield, usually weighing 5 to 8 pounds. Postpaid, Pkt. 10c; oz. 50c; $\frac{1}{2}$ lb. \$1.50; lb. \$5.00.

***EARLY JERSEY WAKEFIELD SPECIAL**—This is still the most valuable for the main crop of early cabbage. We have secured a special strain with solid heads and few outside leaves. It also matured the earliest of some twenty strains we tested.

BIG STRAIN WAKEFIELD—Larger than Early Jersey Wakefield and one week later. Valuable crop to precede Charleston Wakefield.

***LARGE WAKEFIELD or CHARLESTON**—Similar to Jersey Wakefield, but half again as large and ten days later.

GLORY OF ENKHUIZEN—The best variety for summer or fall crops, for its tendency is to produce large heads even in dry weather. It can also be used for early spring crop. It is not satisfactory as a winter cabbage. Very brittle and sweet.

ALL HEAD EARLY—A second early flat headed sort, very sure heading and little subject to bursting. Extra fine for kraut. Very desirable for fall.

DANISH ROUNDHEAD—About two weeks earlier than Oregon Ballhead. The heads are larger and in demand for kraut purposes. It does not withstand aphid or freezing like Oregon Ballhead. Seed from carefully selected heads.

AMERICAN SAVOY—The best main crop Savoy cabbage; quite firm, large heads with curly foliage.

***PORTLAND ROUNDHEAD**—Developed by a local gardener. Heads larger than Oregon Ballhead. Especially fine for summer cutting and early kraut purposes. Postpaid, Pkt. 10c; oz. 50c; $\frac{1}{2}$ lb. \$1.50; lb. \$5.00.

HOLLANDER—Excellent late ballhead type, very hardy. Nearest to Gill's Oregon Ballhead of any variety we have tested.

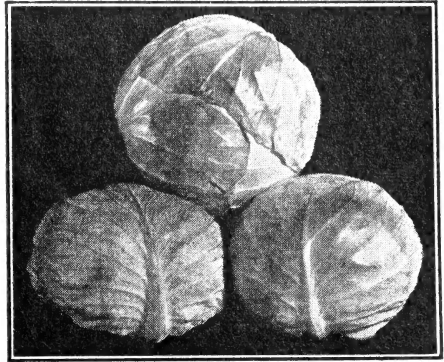
PENN STATE BALLHEAD—Largest of the ballhead types. Short stem late variety desirable for winter storage.

PHANTOM BALLHEAD—A real improvement on the old standard variety of Danish Ballhead short stem. Uniform heads of excellent quality.

DANISH BALLHEAD (Short Stem)—Imported seed of the short stem type. It matures earlier than Oregon Ballhead. Medium sized, solid heads.

DANISH BALLHEAD (Tall Stem)—Imported seed of the tall stem type. Suitable for low, wet land.

STONEHEAD RED—Deep red, exceptionally solid heads of good size.



Cabbage, Gill's Oregon Ballhead

***GILL'S OREGON BALLHEAD**—The acknowledged leader in the Northwest for a main crop winter cabbage. We have developed this strain until it excels all others for solidity, resistance to aphid or freeze injury. It is the best cabbage for crating or general market purposes. The outer leaves are deep green and will hold their color weeks after cutting. It is the best keeper of all. Postpaid, Pkt. 10c; oz. 50c; $\frac{1}{2}$ lb. \$1.50; lb. \$5.00.

Broccoli

***ST. VALENTINE OREGON SPECIAL**—The best sort for spring shipment; the solid, handsome, white heads being of immense size and ready in February and March. It is extensively grown around Roseburg, Oregon, for Eastern shipment.

This special stock was grown by ourselves and is well typed. Much Oregon grown broccoli seed is inferior, but you will find this strain well developed for commercial crops. Postpaid, Pkt. 10c; $\frac{1}{2}$ oz. 45c; oz. \$1.25; $\frac{1}{2}$ lb. \$3.75; lb. \$12.00.

Green Broccoli

IMPROVED EARLY CALABRESE—A valuable Italian vegetable forming heads of deep green, just about the same color as the foliage. After the main head is cut, smaller heads branch out below. It is very tender, nutritious and delicious, and can be raised as easily as cabbage. Plant the seed June 1st to 20th and transplant July 15th to August 10th, in the same manner as other cauliflower or broccoli. It is very hardy and is not injured by light, so needs no protection. Light frosts will not injure it. Postpaid, Pkt. 10c; $\frac{1}{2}$ oz. 50c; oz. 90c; $\frac{1}{2}$ lb. \$2.50; lb. \$7.50.

NOTICE TO OUR CUSTOMERS

Due to the war situation, prohibiting importations, some varieties of Cabbage, Broccoli, most all varieties of Cauliflower, Mangel Beets, and Spinach, are in very limited supply and prices are necessarily higher.

Short crops in our own country, of many varieties of Beets, Carrot, Onion, Parsnip, Spinach and some other less important vegetables, have necessitated some sharp advances in price. However, we have carefully checked our stocks and have made only such proportionate advances as were necessary. Prices subject to change without notice. GILL BROS. SEED CO.

HERB SEEDS—FOR PLANTING

(All Herb Seed Prices Postpaid.)

ANISE—Used as a cordial and for garnishing and flavoring. Seeds have an agreeable aromatic taste. Pkt. 10c.

BASIL (Sweet)—For flavoring soups, stews and highly seasoned dishes. Pkt. 10c.

***BOHEMIAN POPPY**—The poppy seed used on bread and pastry. Pkt. 10c.

CARAWAY—Used for flavoring of bread, pastry, etc. Pkt. 10c.

CATNIP or **CATMINT**—The leaves are used for seasoning. It also makes an excellent bee pasture. Pkt. 10c.

CHIVES—Leaves used in salads and for flavoring soups and stews. Pkt. 10c.

CORIANDER—The seeds are used in the manufacture of liquors and confectionery. Pkt. 10c.

DILL—Mammoth variety. Pkt. 5c; oz. 20c; ½ lb. 45c; lb. \$1.25.

FLORENCE FENNEL—An Italian vegetable with thick leaf stem. It is served boiled or sliced, also cooked in soups. Pkt. 10c; oz. 25c; ½ lb. 90c.

HOREHOUND—Used for seasoning. Pkt. 10c.

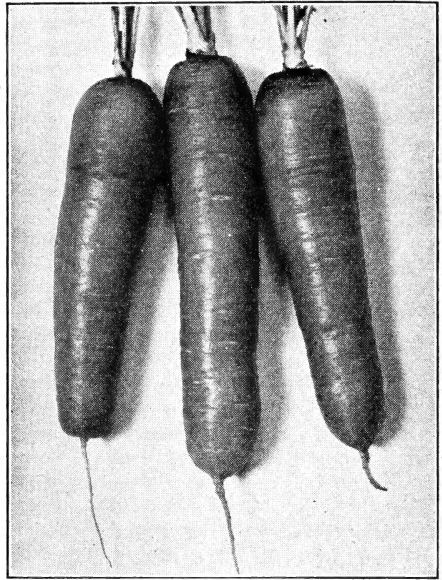
MARJORAM (Sweet)—The leaves and the ends of the shoots are esteemed for seasoning in summer and are also dried for winter use. Pkt. 10c.

ROSEMARY—The aromatic leaves are used for seasoning. Pkt. 10c.

SAGE—Hardy perennial, extensively used for seasoning. Pkt. 10c.

SUMMER SAVORY—A hardy annual. The dried stems, leaves and flowers are extensively used for flavoring, in dressings and soups. Pkt. 10c.

THYME—Used for seasoning. Pkt. 10c.



Carrot, Gill's Special Nantes

SEMESAN, Jr.

For treating seed corn. See page 16.

CAULIFLOWER

CULTURE—For early cauliflower, start in cold frame. For fall cutting, Improved Early Calabrese Green Broccoli and all varieties of cauliflower except the one listed below, should be planted June 1st to 20th and transplanted July 15th to August 10th. For late cauliflower the November-December variety should be planted the first week in May, transplanting July 1st to 15th. For St. Valentine Broccoli, plant the first week in May, transplanting July 20th to August 10th. Cauliflower and Broccoli do best in a rich, loamy soil, not a cold wet location. Plant 2½ to 3½ feet in rows, and 3½ feet between rows. Before the heads are large enough to be exposed to the light, tie or break the leaves carefully over the head to keep the light away from them. Great care should be used in growing plants of any of the early sorts, that they receive no severe check in their growth, as this will cause them to produce premature heads.

HENDERSON SNOWBALL—A popular Snowball type extensively grown for shipping in the Portland territory. Reselected to produce exceptionally white, solid heads well protected with foliage. We recommend this strain for shipping. Postpaid. Pkt. 15c; ½ oz. \$1.35; oz. \$4.00; ¼ lb. \$15.00; lb. \$50.00.

SUPER SNOWBALL—An outstanding early variety producing heads of uniform size, shape and type. The heads are almost round with pure white, smooth curd. Tall foliage protects the heads. Postpaid. Pkt. 25c; ½ oz. \$1.75; oz. \$5.25; ¼ lb. \$18.50; lb. \$65.00.

GILL BROS. SPECIAL SNOWBALL—An excellent late shipping variety grown extensively in the Portland territory. Grown from Reimann stock. Postpaid. Pkt. 15c; ½ oz. \$1.10; oz. \$3.25; ¼ lb. \$12.00; lb. \$40.00.

CATSKILL SNOWBALL—A selected strain of Snowball Cauliflower that is popular with shippers. The flower is solid, white and uniform, and of even surface. Postpaid. Pkt. 15c; ½ oz. \$1.10; oz. \$3.25; ¼ lb. \$12.00; lb. \$40.00.

DANISH GIANT DRY WEATHER—We recommend Gilt Edge.

GILT EDGE or **MT. HOOD SNOWBALL**—Very large, heavy heads of finest quality. The flower is quite smooth and regular and pure white when bleached. Postpaid. Pkt. 15c; ½ oz. \$1.10; oz. \$3.25; ¼ lb. \$12.00; lb. \$40.00.

GIANT EASY BLANCHING—The large, solid, pure white heads are produced near the ground on short stems but the leaves are extra long, while the inner leaves fold closely about the head, making them almost self protecting. This self protecting habit insures a greater number of first grade heads and the long leaves protect the heads in hauling or crating. The plants have strong vitality and are usually free from disease. Valuable for early spring cutting. Postpaid. Pkt. 15c; ½ oz. \$1.35; oz. \$4.00; ¼ lb. \$15.00; lb. \$50.00.

SNOWBALL NO. 16—Early and produces large thick, solid, white heads. Stands up well under rather unfavorable weather conditions. One of the best shipping varieties. Good for summer or fall cutting. Postpaid. Pkt. 25c; ½ oz. \$2.00; oz. \$6.25; ¼ lb. \$22.75; lb. \$75.00.

OREGON SNOWBALL—Very early, large, white, solid heads. Excellent shipping variety. One of the best for fall cutting. Postpaid. Pkt. 25c; ½ oz. \$1.50; oz. \$5.00; ¼ lb. \$17.50; lb. \$60.00.

NOVEMBER-DECEMBER—Requires a long growing season. Especially suited to Pacific Coast states. Postpaid. Pkt. 10c; oz. \$1.75; ¼ lb. \$5.00; lb. \$16.00.

We can supply several of the leading brands of sprays and fungicides, also Rotenone Dusts, Vitamin B1, etc. Write for prices.

CARROTS

CULTURE—Carrots may be planted from March to June. We prefer to plant from May 10 to 25; they will then miss many of the spring weeds and will stand through the dry season better, making a better quality of roots. Plant in rows 3 feet apart covering one-half to one inch, according to weather conditions. Those who plant any quantity should use a good drill, as it lessens the work and gives a more even stand. As soon as they are up, use a wheel hoe, following this with a harrow tooth cultivator.

PRICES—Unless noted are uniformly: Postpaid. Pkt. 10c; oz. 45c; $\frac{1}{2}$ lb. \$1.35; lb. \$4.00.

GILL'S OREGON CHANTENAY—A special strain of our selection producing very smooth roots about one inch longer than the regular strain and of more even diameter the whole length of the carrot. It is very popular with gardeners. The tops are of medium size, tough and wiry, hence the carrots seldom break from the bunches. The roots are deep red color with small core. Very high quality.

GILL'S SPECIAL NANTES—The roots are bright orange, 6 to 8 inches long and very uniform. They have a very small core and are exceptionally tender and sweet. The roots are rather slender, of even diameter and of early maturity. Very desirable for market, especially for bunching, and also selected for the home garden. We offer a fine, re-selected strain grown from our stock seed.

STREAMLINER—Long slender type. Excellent quality.

IMPERATOR—A good market carrot. Roots long, smooth and of rich red color with small core.

CHANTENAY—A good, all around carrot. The roots are very smooth, stump rooted and of good quality.

TABLE GEM—We believe this to be the finest of all table carrots. The roots are 5 to 8 inches long, of even diameter and blunt ends. It is nearly coreless, exceptionally tender and sweet and is delicious eaten raw. It is very early and the tops are small. Suited for forcing or outside culture.

EARLY SCARLET HORN—Very early with small tops. Bright orange red; three inches long and top shaped. A valuable first early sort.

DANVER'S HALF LONG, RED CORED—Deep orange red right through to the center. Heavy yielding; excellent quality.

MORSE'S BUNCHING—Long, almost cylindrical roots. Good color and quality.

STOCK CARROTS

PRICES—Unless noted are uniformly: Postpaid. Pkt. 5c; oz. 25c; $\frac{1}{2}$ lb. 60c; lb. \$1.75.

LARGE WHITE BELGIAN—Long-rooted white stock carrot; very heavy yielding.

LARGE YELLOW BELGIAN—Same as above except color pale yellow.

WHITE MASTODON—Very heavy, half long, tapering, smooth roots.

SWEET CORN

The first requisite for success with corn is acclimated seed—Note those with star.

CULTURE—Prices paid for first early corn will pay the grower to take chances on early planting. For this planting use 4 to 5 seeds per hill and cover one inch deep. Space hills 28 to 36 inches, and rows 3 $\frac{1}{2}$ feet, allowing two stalks to the hill or as some prefer, and we think this gives the best results, plant 15 inches between hills, and thin to one stalk; this gives all the stalks an even show. April 1 to May 1 is a good season for early corn, or course, depending on the weather. May 15th to 25th is good for the later sorts, as they do not resist damp, cold weather so well as the early sorts.

Corn will not fill well unless the patch planted is blocked out; those planting small quantities should make the patch square, or nearly so. This will permit the pollen to blow down on the silk, fertilizing the ears. Early corn may be planted in succession up to June 25. Use Garden Grow fertilizer.

OPEN POLLINATED VARIETIES

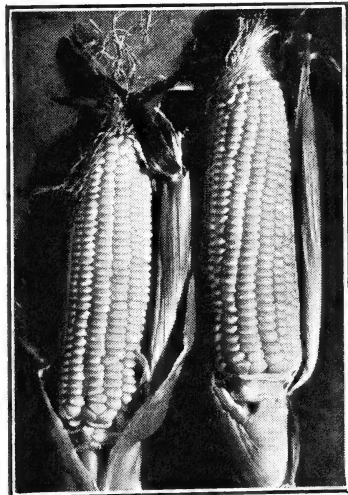
PRICES—Unless noted are uniformly: Postpaid. Pkt. 10c; $\frac{1}{2}$ lb. 20c; lb. 35c. Not prepaid, lb. 25c; 10 lbs. @ 18c; 25 lbs. @ 17c; 100 lbs. @ 16c.

***GILL'S EARLY GOLDEN SWEET**—Earliest of the golden varieties. Ears average about the same size as Improved Bantam with stalks three and one-half feet tall. We recommend this for market and home gardens. The sweetest first early variety we have tested.

***GILL'S GOLDEN EARLY MARKET**—The earliest large, true sweet corn of golden color. It is a cross between our Improved Golden Bantam and Early White Market. According to our own trials and reports from all over the country, it is earlier and larger than Golden Sunshine. It is the outstanding early corn and is a money-maker for gardeners. For home use or market, be sure to plant this variety. It matures about a week earlier than Improved Golden Bantam. Large, golden ears, tightly filled with large sweet grains of high quality.

***GILL'S IMPROVED GOLDEN BANTAM**—Superior to the original Golden Bantam in quality and nearly twice the size, also one week earlier, nearly all ears carry 12 rows of deep, rich golden yellow kernels set close upon the cob. Do not compare this with the original strain, as it is far superior in every respect, and any gardener who places this corn on the market will command better sales and prices.

It has no superior for market, table, canning or drying. Remember, we are the originators of this improved strain and continue our careful stock seed selections each year. If you wish the up-to-date selection buy direct from us. We have received many letters of praise for this corn and many of our customers will have nothing else.



Corn, Gill's Early Golden Sweet

***GOLDEN GIANT**—Large, golden yellow ears of high quality. Matures about ten days after Improved Golden Bantam. Popular yellow corn for late markets.

(Sweet Corn—Continued)

***GILL'S EARLY WHITE MARKET**—The large ears are well filled with sweet, plump, white grains set 12 to 14 rows to the cob. On account of its extreme earliness and large size, market gardeners get very profitable prices.

***OREGON EVERGREEN**—While this is not a first early corn, this strain is considerably earlier than Stowell's Evergreen, which in general character it resembles.

***STOWELL'S EVERGREEN**—Standard white variety later than Oregon Evergreen. Used for market and ensilage.

HYBRID VARIETIES

PRICES—Unless noted are uniformly: Postpaid. Pkt. 10c; $\frac{1}{2}$ lb. 25c; lb. 40c. Not prepaid, lb. 30c; 10 lbs. @ 25c; 25 lbs. @ 22c; 100 lbs. @ 20c.

***HYBRID GOLDEN MARKET**—A top cross hybrid of our Early Golden Sweet with C 13. About as early as Golden Early Market, more productive and very uniform.

***EARLY MARCROSS**—An early yellow hybrid with 12 row ears, longer than Golden Early Market and about one week later. Good quality.

***CARMELCROSS**—Large, uniform golden ears, 12 to 14 rows, about one week later than Early Marcross.

***TOP CROSS IMPROVED GOLDEN BANTAM**—A top cross hybrid of our Improved Golden Bantam with Purdue 39. Three or four days later than Improved Golden Bantam, but more vigorous and produces a heavier tonnage per acre.

***GOLDEN CROSS BANTAM**—A hybrid sweet corn especially valuable where Stewart's disease (wilt) makes it impossible to grow ordinary varieties. Excellent for market gardeners and canners. 12 row ears, more resistant to worm damage and heaviest yielding of any yellow sweet corn variety. Matures very uniformly.

YELLOW SWEET CORN COLLECTION

OPEN POLLINATED VARIETIES

We offer one packet of Golden Early Market, Improved Golden Bantam and Golden Giant for 20c; $\frac{1}{2}$ lb. each for 50c; 1 lb. each for 75c, postpaid. This makes a splendid succession if planted at the same time.

HYBRID VARIETIES

One packet of Hybrid Golden Market, Carmelcross and Golden Cross Bantam for 25c; $\frac{1}{2}$ lb. each for 65c; lb. each for \$1.00, postpaid.

FIELD CORN

The growing of field corn has now reached a stage where it is past being an experiment, and with acclimated seed there is no difficulty to obtain success. We do not and will not handle any but Northwest grown seed of Dent Corn and our customers may feel sure of getting acclimated seed.

***ALBANY DENT** (formerly called Albany Hybrid)—A cross between Minn. No. 13 and Pride of The North. It has the earliness of the No. 13, and the deep grain and small cob of the Pride of The North. It has been given careful selection and is, we believe, one of the finest sorts for grain or ensilage. Postpaid. Pkt. 10c; lb. 25c. Not prepaid, lb. 20c; 10 lbs. @ 10c; 100 lbs. @ \$6.50.

***IDAHO HYBRID** (Grain Type)—Same season as Minn. 13. The extensive root system keeps the plants erect throughout the season, producing longer than average ears and a heavy yield of grain. Postpaid. Pkt. 10c; lb. 35c. Not prepaid, lb. 25c; 10 lbs. @ 15c; 100 lbs. @ \$12.00.

***IDAHO HYBRID** (Silage Type)—Same as grain type, except bred for a longer growing season in order to produce a heavier crop of silage material. Prices same as grain type.

***WISCONSIN HYBRID NO. 525** (certified)—A splendid yellow dent hybrid ripening in a little over 100 days. Uniform, large ears; heavy yielding for grain or ensilage. Prices same as Idaho Hybrids.

***MINN. NO. 13**—An early variety well suited to the Northwest. Grains golden yellow, deep and heavily dented. Prices same as Albany Dent.

CUCUMBERS

Plant 4 feet each way in rich, loamy soil, from May 1 to July 1, 8 to 10 seeds to hill; thin to two good vines. Cover seed one inch deep and press.

PRICES—Unless noted are uniformly: Postpaid. Pkt. 5c; oz. 20c; $\frac{1}{2}$ lb. 50c; lb. \$1.50.

***MISSION**—About a week earlier than Vaughan, 10 to 12 inches long, straight and dark green. Larger in diameter but very even and of exceptionally fine quality. Postpaid. Pkt. 15c; oz. 45c; $\frac{1}{2}$ lb. \$1.35; lb. \$4.00.

THE VAUGHAN or LONGFELLOW—The best slicing cucumber to date for market purposes. The cucumbers are long, straight and of even diameter. When ready for slicing they will average a foot long and about one and one-half inches in diameter. They are a very deep green and the quality is extra fine. Postpaid. Pkt. 10c; oz. 30c; $\frac{1}{2}$ lb. 85c; lb. \$2.50.

WHITE WONDER—The small white pickles taper at the blossom end and are very attractive when packed in glass containers. Exceptionally vigorous. Pkt. 10c; oz. 25c.

A & C—Intense black green color. Fine for slicing and market. Postpaid. Pkt. 10c; oz. 30c; $\frac{1}{2}$ lb. 85c; lb. \$2.50.

BOSTON PICKLING—The most popular pickling sort, medium sized and vigorous.

DAVIS PERFECT—A strong, vigorous grower, producing heavy crops of uniform, long, dark green cucumbers.

IMPROVED EARLIEST OF ALL—Vigorous grower. Dark green, desirable for slicing and pickling.

ARLINGTON WHITE SPINE—We consider this the best strain of White Spine.

SPECIAL LONG GREEN—Extra long and large; handsome dark green; fine for slicing or pickling.

IMPROVED TELEGRAPH—The finest hothouse or forcing cucumber; dark green fruits that attain a length of about twenty inches. Very prolific, crisp and of superior quality. Postpaid. Pkt. 35c.

SMALL GHERKIN—A small, round, prickly variety used only for pickles.

LEMON CUCUMBER—Resembles a lemon, both in color and form. Splendid for pickling or slicing. Postpaid. Pkt. 5c; oz. 25c; $\frac{1}{2}$ lb. 75c.

KALE, EDIBLE

Culture, same as that of cabbage.

TALL GREEN SCOTCH CURLED—Tall and finely curled leaves. Postpaid. Pkt. 5c; oz. 20c; $\frac{1}{2}$ lb. 45c; lb. \$1.50.

DWARF GERMAN—Finely curled, low growing. Postpaid. Pkt. 5c; oz. 20c; $\frac{1}{2}$ lb. 45c; lb. \$1.50.

GEORGIA COLLARDS—Valuable greens for table use and stock feeding. They grow 2 or 3 feet tall and form loose, open cabbage-like heads. They withstand our winters and can be used all winter long. Postpaid. Pkt. 5c; oz. 20c; $\frac{1}{2}$ lb. 45c; lb. \$1.50.

KALE FOR FEEDING

***JERSEY KALE**—Large, heavy, massive plants, with giant, broad leaves. This variety produces by far the largest crop. We offer seed of our own growing. Postpaid. Pkt. 5c; oz. 15c; $\frac{1}{2}$ lb. 30c; lb. 85c.

***WINTER PROOF THOUSAND HEADED**—Much more resistant to frost than the regular strain. Pkt. 5c; oz. 15c; $\frac{1}{2}$ lb. 35c; lb. \$1.00.

KOHL RABI

EARLY WHITE VIENNA—The best for table use. Kohl Rabi should be grown more, as it is a delicious vegetable, cooked like turnips. Transplant like cabbage in July; rows 3 feet wide and 1 foot in rows. Postpaid. Pkt. 10c; oz. 35c; $\frac{1}{2}$ lb. \$1.00.

POP CORN

***AUSTRALIAN HULLESS** (Improved White Rice) Small, sharp pointed, white grains. Extra fine quality. Postpaid. Pkt. 10c; $\frac{1}{2}$ lb. 20c; lb. 30c.

***SPANISH PEARL**—Large, round, smooth, white grains. Best commercial sort. Postpaid. Pkt. 10c; $\frac{1}{2}$ lb. 20c; lb. 30c. Not prepaid, 10 lbs. @ 20c.

LETTUCE

Can be planted almost any time of the year. Give head varieties plenty of room, at least 15 inches apart each way. Cover one-half inch deep. Referring to head lettuce, it is generally agreed among large growers that aging of the seed produces earlier and firmer heads, besides making them more sure heading.

NEW YORK (See strains listed below)—This variety is the most popular lettuce in America. It makes large, solid heads and bleaches very white and brittle. During the summer months this lettuce is shipped East from Oregon and Washington, and, in the winter, it is shipped to our Northern markets from California. We have a very large trade with market gardeners and sell New York seed to plant thousands of acres each year. Do not gamble with your crop by buying cheap lettuce seed. Intensive selection has resulted in several strains of New York, seven of which we list below.

IMPERIAL "44"—Medium sized, hard heads with few outer leaves. Fine for August and early September cutting in the Pacific Northwest. Recommended for general use in Eastern locations. Postpaid. Pkt. 10c; oz. 30c; ¼ lb. 85c; lb. \$2.50.

IMPROVED NEW YORK "B"—About the same color as New York "B," but has a smoother, heavier leaf structure and is a sturdier type. Recommended for the same season. Postpaid. Pkt. 10c; oz. 30c; ¼ lb. 85c; lb. \$2.50.

OAK LEAF—Forms a bunch or indefinite head of medium size and light green. Excellent quality. Postpaid. Pkt. 10c; oz. 25c.

NEW YORK "B"—Resembles No. 12, but has better leaf coverage, is larger and more brown resistant. Desirable for early spring, summer and fall cutting.

NEW YORK No. 12—Large, compact, medium green heads, adapted to early spring and summer cutting. Very popular with growers.

IMPERIAL "152"—Medium sized solid heads. Quite hardy, very sure heading, also resistant to brown blight. Especially desirable for fall cutting.

IMPERIAL "615"—One of the largest heading varieties. Resistant to brown blight; does not make suckers. Desirable for early spring cutting in the South and for fall cutting in the Northwest.

IMPERIAL "847"—Large, dark green heads, desirable for spring, summer and fall cutting. Tip burn resistant. Black seed.

PRICES ON NEW YORK TYPES—Five above types. Postpaid. Pkt. 5c; oz. 25c; ¼ lb. 65c; lb. \$2.00.

CREAMY HEART—An excellent butterhead type. Hardy for early planting. Medium size.

ICEBERG—Produces large, firm heads, very tender and brittle. Withstands hot weather better than most sorts.

COS, PARIS DARK GREEN—Folds well and forms a good firm head, which is light green and white at the heart.

HANSON—Large firm heads; medium green.

TOMHANNOCK—A beautiful, quick growing loose leaf lettuce. Leaves large, bordered reddish brown; very tender and sweet.

GRAND RAPIDS—The standard hothouse lettuce for forcing; also does fine in the open ground. Loose leaves with light fringed edges.

CHICKEN LETTUCE—A rough, tall, loose plant for feed only. Grows 4 feet high and supplies abundant green feed. Fine tonic for laying hens.

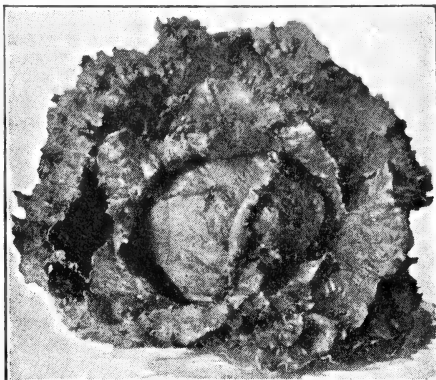
PRICES ON ABOVE SEVEN LETTUCE varieties: Postpaid. Pkt. 5c; oz. 15c; ¼ lb. 35c; lb. \$1.25.

HORSE RADISH

Plant in the spring 18 to 24 inches apart. Set the roots small end down. Postpaid. Doz. 50c; 100 for \$2.00. Write for prices on quantities.

SEMESAN

A highly valuable seed disinfectant, also aiding germination. See page 16.



Lettuce, New York "B"

LEEK

ELEPHANT—Culture same as onions. Large size. The best. Postpaid. Pkt. 10c; oz. 50c; ¼ lb. \$1.35; lb. \$4.00.

PARSLEY

TRIPLE MOSS CURLED—Dark green moss-like leaves. Postpaid. Pkt. 5c; oz. 20c; ¼ lb. 45c; lb. \$1.25.

HAMBURG or TURNIP ROOTED—For flavoring soups and stews. Postpaid. Pkt. 5c; oz. 20c.

Muskmelon

CULTURE—Loam soil is best fertilized with rotted manure and Garden Grow fertilizer. Plant 4 to 6 feet, giving more room for larger varieties. Use 8 to 10 seeds to the hill; cover 1 to 1½ inches deep. Turn the vines with the row to permit cultivation.

PRICES—Unless noted are uniformly: Postpaid. Pkt. 5c; oz. 15c; ¼ lb. 45c; lb. \$1.35.

***OREGON DELICIOUS**—We introduced this exceptional melon for quality, size and earliness. They usually weigh 6 to 8 pounds. The shape is round oblong, slightly ribbed and with a creamy green color when ripe. The flesh is salmon, very thick and of wonderful quality. The melons are quite heavily netted and of attractive appearance. It is a selection from the Spear melon. Postpaid. Pkt. 10c; oz. 20c; ¼ lb. 50c; lb. \$1.50.

THE BENDER—A large, highly flavored, round melon; very early. Delicious, deep orange flesh.

HALE'S BEST EARLY—On account of its earliness, size and fine shipping and keeping qualities this melon has become very popular. It is larger than the Rocky Ford types; is thoroughly netted and with attractive, thick, orange flesh.

JUMBO HALE'S BEST or TRIUMPH—Early very heavily netted, no ribs, and 25 to 30% larger than the regular Hale's Best. Thick, bright orange flesh and extremely small seed cavity.

HEARTS OF GOLD—An orange fleshed melon of uniform medium size and ideal for shipping. The rind is firm and densely netted. The flesh is thick, high colored and delicious.

EXTRA EARLY KNIGHT—An extremely early melon of high quality and a good shipper. Flesh thick and very sweet; green blending to light pink.

BURRELL GEM SPECIAL—A splendid shipper; seed cavity small, flesh firm and reddish orange. Very high quality.

(Muskmelon—Continued)

PERFECTED PERFECTO—Superior shipping melon. Fruits almost round; heavily netted; very uniform. Highest quality.

HONEY ROCK or Sugar Rock—Early, prolific and a good shipper for reasonable distances. Medium size, nearly round. Flesh thick, salmon colored and fine flavored.

HONEY DEW—(Green Flesh)—A round-oblong shaped melon with almost white rind. Flesh thick light green and sweet as honey.

GOLDEN RIND HONEY DEW—(Green Flesh)—Also called Golden Honeymoon. About ten days earlier than regular Honey Dew. Same shape, thick flesh, good flavor and carries well in shipping.

PERSIAN—Large, round, heavily netted melon without ridges. Thick yellow flesh of delightful flavor. Usually average about 10 lbs. in weight. Not recommended for territory west of Cascades. Postpaid. Pkt. 10c; oz. 25c; $\frac{1}{2}$ lb. 75c; lb. \$2.00.

EARLY YELLOW PERSIAN—Slightly long in shape and when ripe a golden color shows through the light gray netting. Flesh thick, rich salmon with a wonderful aroma and flavor. A week earlier than the Persian. Postpaid. Pkt. 15c; oz. 35c; $\frac{1}{2}$ lb. \$1.00; lb. \$3.00.

CASABA

GOLDEN BEAUTY—Bright yellow, about globular in shape and the first to ripen. They will mature in most localities where melons can be grown. Postpaid. Pkt. 5c; oz. 20c; $\frac{1}{2}$ lb. 45c; lb. \$1.35.

Watermelon

Plant 8 to 10 seeds in hills 6x6. Thin to 2 best vines. Turn vines with the rows. Plant May 10th.

***EARLY ARIZONA**—Medium sized round melons with dark green rind and deep red flesh. Dark brown seed. About 30 days earlier than Klondike. Quality equals that of Klondike. Seed of our own growing. Postpaid. Pkt. 10c; oz. 20c; $\frac{1}{2}$ lb. 50c; lb. \$1.50.

EARLY NORTHERN SWEET—Ripens in 9 to 10 weeks from planting. Green with lighter stripes. Flesh dark red. Weighs 9 to 10 lbs. Splendid for early market. Postpaid. Pkt. 10c; oz. 20c; $\frac{1}{2}$ lb. 50c; lb. \$1.50.

KLONDIKE—A melon of the best quality, being exceptionally sweet and fine. The flesh is very brittle and the fruit oblong. We carry a selected strain. Postpaid. Pkt. 5c; oz. 20c; $\frac{1}{2}$ lb. 50c; lb. \$1.50.

STRIPED KLONDIKE—Wherever this melon has been offered on the markets it has replaced other varieties and brought a higher price. It often carries three or four mature melons at one time that easily attain a size of twenty-five to thirty pounds. The seed offered is from the originator. Postpaid. Pkt. 10c; oz. 20c; $\frac{1}{2}$ lb. 60c; lb. \$1.75.

KLECKLEY SWEET SPECIAL—This special strain is the result of careful selection. It is an early sort, producing good crops of melons 18 to 20 inches long and 8 to 10 inches thick. The skin is dark green without markings, and the flesh is exceptionally sweet. Postpaid. Pkt. 5c; oz. 15c; $\frac{1}{2}$ lb. 35c; lb. \$1.00.

BLACK SEEDED ICE CREAM—Round shaped melons with thin, ivory colored skin. Pink meated and of fine quality. It will keep late into the winter. Very prolific. Matures very early. Postpaid. Pkt. 5c; oz. 15c; $\frac{1}{2}$ lb. 35c; lb. \$1.00.

PRESERVING CITRON—Round green fruits distinctly marked with irregular stripes. Used for preserves and candied fruit. **RED SEEDED** or **GREEN SEEDED**. Postpaid. Pkt. 5c; oz. 20c; $\frac{1}{2}$ lb. 50c.

BOTTLE MUSHROOM SPAWN

Grown in sterile bottles which are removed and the spawn then packed in cartons. One carton of bottle spawn sufficient for 40 sq. ft. of bed. Produces fine white mushrooms. Postpaid. Per carton \$1.00.

Parsnips

Culture same as carrots, except time of planting, which should be about May 1st.

***GILL'S SUCCESS**—Longer roots than the Tender Heart variety and better adapted to market purposes, as it is not so thick at the crown and will bunch better. The smooth, white roots cook tender and sweet. Postpaid. Pkt. 5c; oz. 20c; $\frac{1}{2}$ lb. 50c; lb. \$1.50.

***GILL'S TENDER HEART**—On account of the superior quality of this parsnip, our family has retained this seed annually for over thirty years. Unlike other parsnips, the heart is tender, never tough; roots are smooth, hollow crown, thick and heavy at top, tapering abruptly, making it easy to dig. We have the exclusive seed. Postpaid. Pkt. 5c; oz. 20c; $\frac{1}{2}$ lb. 50c; lb. \$1.50.

ALL AMERICAN—Roots clear white, clean, of fine texture and with small core. Intermediate shape, hollow crown. Recommended for market growers. Postpaid. Pkt. 10c; oz. 25c; $\frac{1}{2}$ lb. 50c; lb. \$1.50.

HARRIS MODEL—Medium length, very smooth and white and remarkably free from small roots and prongs. Recommended for home as well as market gardens. Pkt. 10c; oz. 25c; $\frac{1}{2}$ lb. 50c; lb. \$1.50.

Peppers

Start plants in a hot bed or in pots in a warm room in March. Transplant in open ground May 10th to 20th, rows 3½ feet wide, 2 feet in rows.

HARRIS EARLY GIANT—The earliest of the large peppers and exceedingly mild and sweet. It is ideal for those localities having short season and also valuable for market where ripe, red peppers are in demand. It averages about 3½ inches long and 2½ inches thick. Postpaid. Pkt. 10c; $\frac{1}{2}$ oz. 40c; oz. 65c; $\frac{1}{2}$ lb. \$2.00.

OAKVIEW WONDER—A week earlier than California Wonder; slightly smaller, but blockier and more symmetrical. It has the same thick walls and high quality. Yields heavy and very uniform. Postpaid. Pkt. 10c; $\frac{1}{2}$ oz. 40c; oz. 65c; $\frac{1}{2}$ lb. \$2.00.

CALIFORNIA WONDER—This fine pepper has the heaviest meat of all. Large, blocky fruit, exceptionally mild and sweet. Fruit upright, crimson, measuring 4½ inches long by 4 inches in diameter. Season medium. Postpaid. Pkt. 10c; $\frac{1}{2}$ oz. 40c; oz. 65c; $\frac{1}{2}$ lb. \$2.00.

WORLD BEATER—One of the best large peppers. Early, thick flesh, mild and sweet, 5 inches long by 3 inches thick. Postpaid. Pkt. 5c; $\frac{1}{2}$ oz. 30c; oz. 50c; $\frac{1}{2}$ lb. \$1.50.

RUBY KING—Large, attractive fruit about 4 inches long. Bright red when ripe. Thick meated. Postpaid. Pkt. 5c; $\frac{1}{2}$ oz. 30c; oz. 50c; $\frac{1}{2}$ lb. \$1.50.

LONG RED CAYENNE—Long red peppers; extremely hot. Postpaid. Pkt. 5c; oz. 50c.

MUSTARD

FORDHOOK FANCY—A handsome, vigorous growing, mild variety, standing a long time before going to seed; leaves bright green, intensely curled and fringed at the edges. Postpaid. Pkt. 5c; oz. 15c; $\frac{1}{2}$ lb. 35c; lb. \$1.00.

GIANT SOUTHERN CURLED—Large variety with fine curled leaves. Postpaid. Pkt. 5c; oz. 15c; $\frac{1}{2}$ lb. 35c; lb. \$1.00.

BLACK MUSTARD—A distinctly pungent sort with yellow-green, broad oblong toothed leaves. Seeds used for preparing ground mustard. Postpaid. Pkt. 5c; oz. 20c; $\frac{1}{2}$ lb. 35c; lb. \$1.00.

TENDER GREENS—Sometimes called mustard spinach. A rapid growing Oriental greens producing immense yields. It is suited for early spring or fall sowing. Mild mustard flavor. Easy culture. Postpaid. Pkt. 10c; oz. 15c; $\frac{1}{2}$ lb. 35c; lb. \$1.00.

ONIONS

CULTURE—A rich loam is best fertilized with well rotted manure and Garden Grow fertilizer. Sow seed in February or March if the condition of the ground and the weather will permit. Sow with drill in rows 14 to 16 inches apart; cover half-inch deep. Hoe with wheel hoe as soon as they are up, but do not more than scrape the surface as onions do not stand deep cultivation. Thin them to about 8 plants to the foot. It requires 3 to 4 lbs. of seed to the acre. Onions do well year after year on the same ground.

Seed of the white onions can be planted in the spring, summer or fall for green onions. Those planted in the fall, about September 1st, will produce green onions to winter over for early spring use.

PRICES—Unless noted are uniformly: Postpaid. Pkt. 10c; oz. 95c; ¼ lb. \$2.75; lb. \$8.00. Write for prices on larger quantities.

***SELECT OREGON YELLOW DANVERS**—The main variety planted in Oregon and the Northwest. The onions are a rich coppery yellow; large and nearly globe-shaped with small necks. Early, heavy yielding and a splendid keeper. Postpaid. Pkt. 10c; oz. 70c; ¼ lb. \$2.00; lb. \$6.00.

***EXTRA EARLY WALLA WALLA SWEET**—About ten days earlier than regular Walla Walla sweet, but slightly smaller. Postpaid. Pkt. 10c; oz. 70c; ¼ lb. \$2.00; lb. \$6.00.

***WALLA WALLA SWEET**—Large, early yellow onion of mild flavor. Used by growers in Walla Walla territory for fall or early spring planting. Postpaid. Pkt. 10c; oz. 70c; ¼ lb. \$2.00; lb. \$6.00.

EARLY GRANO—Crop failed. Write for prices on 1942, crop ready about September.

***TUCKER GRANO**—A heavy bearing strain of Sweet Spanish. Our stock has been selected to hold outer skin well in handling.

UTAH SWEET SPANISH—A giant globe shaped yellow onion with small top; mild sweet flesh. This development of the Riverside strain is an outstanding improvement. Growers that have tried it demand it again. More resistant to thrip and the skin does not break as easily as other strains we have tested.

PRIZETAKER—Crop failed. We recommend Walla Walla Sweet.

LARGE RED WETHERSFIELD—Large, flattened onions; purplish red.

WHITE ONIONS

CRYSTAL WAX BERMUDA—A pure white onion, very flat, mild and sweet. Extra early.

WHITE PORTUGAL or SILVERSKIN—A medium early sort with flattened shape and clear white skin. Extensively planted by gardeners for green onions and is harder than most sorts.

SOUTHPORT WHITE GLOBE—Handsome globe-shaped white onions noted for keeping qualities and heavy production. Highly recommended as a green bunching onion for spring and summer use. Orders limited to 1 oz.

WHITE SWEET SPANISH—Crop failed. Write for prices on 1942 crop, ready about September.

WHITE BUNCHING—Crop failed. Write for prices on 1942 crop, ready about August.

EARLY WHITE BARLETTA—The earliest and smallest of the white pickling onions.

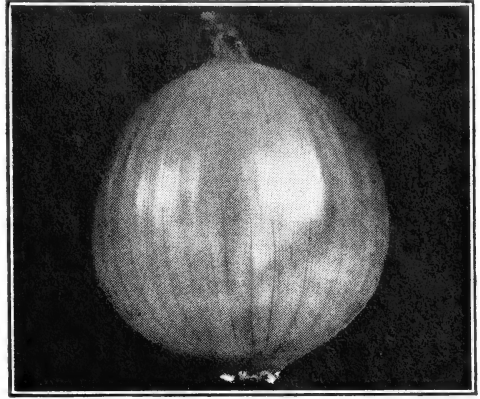
JAPANESE GREEN ONION—This onion is grown by Japanese for winter use. They plant early in the spring and cultivate all summer, hilling it up with earth in the fall. The bleached stalk is often a foot long and one inch thick. It is harvested all winter.

ONION PLANTS

BERMUDA, YELLOW SWEET SPANISH, WHITE SWEET SPANISH and WALLA WALLA SWEET—These plants will grow early onions of very mild flavor. (Ready late February.) Plant in the spring as soon as weather permits. Price postpaid, 1 bundle, about 100 plants, 30c; 2 bundles, 50c; 5 bundles, \$1.00; 10 bundles, \$1.75. Not prepaid, erate of about 6000 for \$3.50, F. O. B. Portland, Oregon; orate for \$3.00, F.O.B. Walla Walla, Washington. Write for prices on larger quantities.

HOTKAPS

Grow early flowers and vegetables by using Hotkaps. Prices, not prepaid. Home garden. Package, with cardboard setter, 25 for 50c; 100 for \$2.85; 250 for \$4.25 (these two packages include Garden Setter and Tamper); 1000 @ \$11.00. Write for prices on quantities.



Onion, Utah Sweet Spanish

ONION SETS

***BOTTOM SETS**—Small onions grown from seed planted too thickly to reach mature size. They produce green onions in a short time, or if left to grow they will produce nice, large, dry onions earlier than those grown from seed. Postpaid. ¼ lb. 15c; lb. 25c. Not prepaid, lb. 20c; 10 lbs. @ 15c.

YELLOW MULTIPLIER or SHALLOT—Popular perennial that multiplies each year. Desirable for early crop. Brown skin, mild, white flesh. Postpaid. ¼ lb. 20c; lb. 35c.

GARLIC

***LARGE FRENCH**—This giant variety will yield nearly double the common kind. Plant the sets very early in the spring. Postpaid. ¼ lb. 25c; lb. 40c.

***SILVERSKIN**—Large, late keeping variety. Postpaid. ¼ lb. 25c; lb. 40c.

Potatoes

We can supply certified seed of most leading sorts, such as Earliest of All, Early Rose, Irish Cobbler, Katahdin, Nettle Gem, Burbank, and others. Write for quotations.

PRICES ON SMALL LOTS—By mail: Postpaid to 4th zone, beyond which send additional. Lb. 20c; 3 lbs. 50c.

SEMESAN BEL

For treating seed potatoes. See page 16.

SWEET POTATOES

CULTURE—Set out in rows four feet apart and 15 inches apart in rows, about May 5th to June 1st. Use sandy loam soil in a warm location. Acclimated fresh dug plants are very essential.

PRICES ON PLANTS—Strong, healthy plants of local growth. Postpaid. Doz. 50c; 3 doz. \$1.00; 100 @ \$1.75.

NANCY HALL—Produces good sized tubers of medium length and quite thick in diameter. The flesh is of a rich orange color and very sweet. It is more like a yam than a sweet potato.

PORTO RICO—A large, reddish skinned sort. Strong, vigorous grower, producing heavy crops.

JERSEY SWEET—Good yielding but somewhat smaller than above varieties and flesh is drier than the yam type.

GARDEN PEAS

CULTURE—Plant as early as the ground can be worked in the spring. Peas will not reach perfection if planted after May 1st, although they will make a fair crop. They should be well rooted before warm weather begins. If planted during February and March, they will mature before the aphids get started. Our Northwest grown seed is acclimated and will give better results. Pea seed planted in winter months should be treated with Semesan. Inoculate all legumes with NITRAGIN. See page 16.

PRICES—Unless noted are uniformly: Postpaid. Pkt. 10c; $\frac{1}{2}$ lb. 20c; lb. 35c. Not prepaid, lb. 25c; 5 lbs. of one variety @ 20c; 10 lbs. and up @ 19c; 100 lbs. @ 18c.

TALL VARIETIES

***WORLD'S RECORD**—An improved Gradus, being earlier and more dwarf. Darker green pods containing 7 to 9 peas of high quality.

***SURPRISE**—Very early. Vines 3 feet. Pods $2\frac{1}{2}$ inches. Fine quality and flavor. Excellent canning variety.

***GRADUS**—A large, deep green podded sort, popular with gardeners. It matures extra early and is quite productive.

***IMPROVED TELEPHONE** (Dark Green or Alderman strain)—By far the best variety of this type. Dark green vines and pods. Vigorous growth, 4 to 6 feet tall, producing enormous crops. Pods $4\frac{1}{2}$ to $5\frac{1}{2}$ inches long, containing 8 to 11 peas of high quality. Excellent for home gardens, market gardens and shipping.

***GIANT LUSCIOUS SUGAR** (Edible pods)—The large, broad pods are 5 to 6 inches long and are cooked like snap beans. Postpaid. Pkt. 10c; $\frac{1}{2}$ lb. 20c; lb. 35c. Not prepaid, lb. 30c; 10 lbs. @ 25c.

DWARF VARIETIES

***LAXTON'S PROGRESS** or **IMPROVED LAXTONIAN**—Pods larger than Hundredfold and a few days earlier. Vines medium dark green; pods handsome dark green; peas large and extra sweet. Very popular with home and market gardeners.

***HUNDREDFOLD**—Also called Blue Bantam. Early. Vines and pods very deep green. Peas large and of excellent quality.

***LITTLE MARVEL**—Superior to American Wonder with 3 inch pods and better quality.

***GIANT PODDED HAMPER**—Heavy bearing, dark green vines and pods. Excellent quality for market or home gardens.

***PACIFIC MARKET**—Resembles the Dwarf Telephone but darker green and much more productive. Vines two feet tall. High quality. Popular with shippers and market gardeners.

***GILBO**—Heavy dark green vines, giant pods larger than Improved Telephone. Excellent quality.

***DWARF ALDERMAN**—Same size pods, dark green color, and same season as Improved Telephone. Vines about 3 feet tall.

***GIANT STRIDE**—Heavy yielding; high quality. Pods same size and shape as Alderman. Same season. Vines about 2 feet. Recommended for market and home garden.

***G. O. P. (Grand Old Pod)**—Largest pod of any of the dwarf varieties. Dark green vines and pods. Excellent quality.

***IMPROVED STRATAGEM**—Valuable late variety.

SUCCESSION PEA COLLECTION

We offer the following, suited for home gardeners who wish a variety of peas running from early to late. Postpaid. 1 Pkt. each. Surprise, World's Record, Hundredfold, Improved Telephone and Giant Stride. Worth 50c for 35c; $\frac{1}{2}$ lb. ea. for 75c; or 1 lb. ea. for \$1.35.

A good lawn does not just happen. It is product of good soil, good seed from desirable varieties of grasses, and proper care. For grass seed, fertilizers, etc., see page 17. Write for our free bulletin "Practical Lawn Culture."



Peas, Improved Telephone

Pumpkin

Plant May 10th to 20th in rows 10 feet wide and 8 feet in the row about 8 to 10 seeds to hill, thinning to two good plants. Turn vines with the row to permit cultivation. Use 200 lbs. Land Plaster to the acre, plowing it in; also 750 to 1000 pounds Garden Grow fertilizer.

***ORANGE WINTER LUXURY**—This improved strain of our own introduction is far better than the original. The skin, a rich golden orange, is covered with a fine netting, while the meat is very thick, fine grained and of rich golden yellow. It is by far the best pumpkin. Simply cook it done and it is ready for use in making pies. It requires less sugar and eggs than other varieties. Extra early and of medium flattened shape. A splendid keeper that has no equal in quality or appearance. Postpaid. Pkt. 5c; oz. 20c; $\frac{1}{2}$ lb. 40c; lb. \$1.25.

CONNECTICUT FIELD or **JACK O' LANTERN**—The common field pumpkin grown for stock feeding and Jack o' Lanterns. Rich orange colored skin. Postpaid. Pkt. 5c; oz. 15c; $\frac{1}{2}$ lb. 35c; lb. \$1.00.

SMALL SUGAR—Rather round fruit of small size 5 to 7 inches in diameter. Smooth skin of bright orange color. Fine quality for pies. Early maturity. Postpaid. Pkt. 5c; oz. 15c; $\frac{1}{2}$ lb. 35c; lb. \$1.00.

KING OF MAMMOTH—A giant, often weighing 200 pounds; suited for feeding and exhibition. Postpaid. Pkt. 10c; oz. 20c; $\frac{1}{2}$ lb. 40c; lb. \$1.25.

OKRA

EARLY DWARF GREEN—Very productive, of short, deep green pods; extra early. Postpaid. Pkt. 5c; oz. 15c; $\frac{1}{2}$ lb. 35c; lb. \$1.00.

PERKIN'S MAMMOTH LONG GREEN—Medium early, very productive. Pods 7 to 8 inches long, slender, meaty, tapered, and ribbed. Postpaid. Pkt. 5c; oz. 15c.

Radish

CULTURE—Radishes can be planted almost the year around, except during cold weather months. They can be planted in the fall as late as October 15th. They are then available during winter months.

PRICES—Unless noted are uniformly: Postpaid: Pkt. 5c; oz. 15c; 1 lb. 35c; lb. \$1.00. Write for prices on larger quantities.

***EARLY SCARLET TURNIP WHITE TIP**—See Sparkler White Tip.

***SPARKLER WHITE TIP**—The lower third is white with bright red on upper portion. High quality seed of our own growing.

***HALF AND HALF**—A very attractive, early turnip radish. Half red and half white. A splendid variety for market and fast becoming popular.

EARLY SCARLET GLOBE—Beautiful scarlet globe-shaped radish, of quick maturity and exceptionally fine flavor. Very fine market sort.

COMET—Ball shaped, bright scarlet; small tap roots. Splendid quality. Will remain crisp and solid when other early radishes have become pithy.

CRIMSON GIANT—A crimson, turnip-shaped radish that combines large size with superior quality. Popular for later spring and summer use.

LONG BRIGHT SCARLET WHITE TIP—The roots are 4 to 5 inches long, very attractive and fine quality.

WHITE ICICLE—A splendid white radish of long shape and with mild flavor. Very popular.

CINCINNATI MARKET—Crisp and brittle; deep scarlet color; five to seven inches long.

RADISH COLLECTION

We will mail one packet of each of the above 8 varieties of radish, and the first 2 varieties of winter radish listed below, worth 50c, for 35c; postpaid.

WINTER RADISHES

SCARLET CHINA—Roots of bright scarlet color. Fine quality. Sow in late August for winter use.

WHITE CHINESE—Long, white, stump rooted radish, always solid, crisp and mild.

JAPANESE NERIMA—This remarkable radish will grow over three feet long and weigh 10 to 15 lbs. each. If properly stored, they will keep through the winter like rutabagas. Plant about August 1st to 15th. Postpaid. Pkt. 5c; oz. 20c; 1 lb. 50c; lb. \$1.50.

RHUBARB SEED

CRIMSON WINTER—Early and long bearing. Fine flavor. Transplant when roots are large as a pencil. Rhubarb seed will not always produce plants true to type. Postpaid. Pkt. 10c; oz. \$1.00; 1 lb. \$3.50.

RHUBARB ROOTS

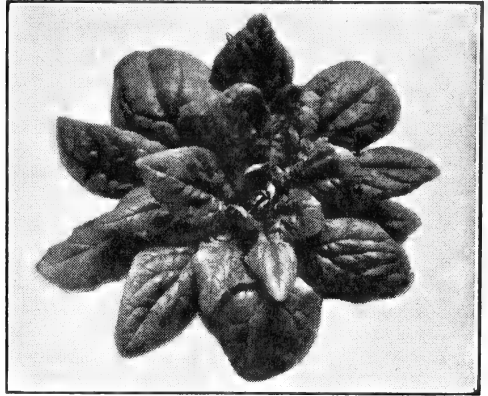
RIVERSIDE GIANT—Extra large stalks of rich color and fine flavor. Strong 1-year crowns with side roots. These will establish themselves quickly and practically all will grow. Postpaid. Each 20c; doz. \$1.50; 100 @ \$7.50. Write for quantity prices.

GERMAN WINE—Large stalks. Skin and flesh rich wine red. Postpaid. Each 35c; 3 for \$1.00; doz. \$2.50.

Rutabaga

CULTURE—Sow in drills, 3 feet apart; thin to 6 inches apart. May be planted from June 15th to July 15th. The later sowings produce the best quality.

***IMPROVED PURPLE-TOP YELLOW**—Produces smooth, globe-shaped roots of good size. Flesh deep yellow and fine grained. The best for table use; very rich and productive for stock feeding. It is early and will mature good roots planted late in the season. Very popular with gardeners for winter storage. Postpaid. Pkt. 5c; oz. 20c; 1 lb. 45c; lb. \$1.25.



Spinach, New Giant Leaf

Spinach

CULTURE—Sow in drills 16 to 20 inches apart, thin to 3 inches. For early spring use, sow in the fall, or sow in early spring for later use. Fine fall spinach can be grown by planting seed August 20th to September 1st, and winter spinach can be planted until October 15th.

PRICES—Unless noted are uniformly: Postpaid. Pkt. 5c; oz. 15c; 1 lb. 30c; lb. 75c.

***NEW GIANT LEAF**—The largest and the most productive of any sort we have tried. Plants 20 inches across are not uncommon on good soil. The leaves are simply immense, of deep green, very heavy, brittle and tender. It is very slow to run to seed and is especially valuable for spring, summer and fall cutting.

***NORTHLAND**—A dark green selection out of Giant Leaf. It has all the good characteristics of that variety and in addition, a darker color. Outstanding for home and commercial gardens.

***IMPROVED THICK LEAF or VIROFLAY**—This variety is very popular and we have a fine strain of seed. The leaves are broad and smooth and of medium deep green. It will stand more cold weather than any other sort and is very popular for early spring cutting.

***WINTER GIANT**—A recent introduction similar to Viroflay. Leaves somewhat larger, and does not bolt very quickly.

***HOLLANDIA**—This giant leaved prickly seeded sort has become very popular with gardeners for spring, summer and fall cutting. Dark green, broad, thick leaves. Very quick grower; excellent for canning.

***LONG STANDING SAVOY**—Very early with upright crumpled leaves. Stands a long time without bolting to seed.

NEW ZEALAND SPINACH

A good summer vegetable which resists the heat and can be cut throughout the season. Plant seed after the ground becomes warm. It differs in appearance from the regular spinach but is prepared in the same manner. Postpaid. Pkt. 10c; oz. 35c; 1 lb. \$1.00.

SALSIFY OR VEGETABLE OYSTER

MAMMOTH SANDWICH ISLAND—A good sort and most generally planted. Cultivate same as carrots. Postpaid. Pkt. 10c; oz. 25c; 1 lb. 60c; lb. \$2.00.

SQUASH

CULTURE—Plant from May 10th to 20th in hills 10 feet apart, 8 to 10 seeds to the hill. Thin to two strong vines. Sow 200 pounds of land plaster to the acre and plow in. Write us for fertilizer hints.

PRICES—Unless noted are uniformly: Postpaid. Pkt. 5c; oz. 20c; $\frac{1}{2}$ lb. 45c; lb. \$1.40.

***GILL'S GOLDEN DELICIOUS**—We take much pride in offering this remarkable squash of our own origin. We have not found any variety that will equal it for quality. It is the finest squash for pies and even picked young as a summer squash, its quality is outstanding. The flesh and skin are a rich golden orange with no trace of green near the rind. The flesh is two to three inches thick. It cooks extra dry, fine grained and sweet. Many of our friends say, "It is better than a sweet potato." The skin is thin without a hard shell, but it is a fine keeper for winter use. On account of its high quality and attractive color, it has created a sensation with canners and those who tested it claim it has the highest starch content of any variety they have tried. It grows very vigorous and produces heavy crops. Postpaid. Pkt. 10c; oz. 20c; $\frac{1}{2}$ lb. 45c; lb. \$1.40.

***GILL'S GOLDEN TABLE QUEEN** (see back cover)—A golden strain which we have selected and developed out of Table Queen. Thicker meated, better quality and more attractive for table use when baked. Also delicious used as a summer squash when the fruits are 2" to 2 $\frac{1}{2}$ " long. Do not fail to try this fine new squash. Postpaid. Pkt. 10c; oz. 20c; $\frac{1}{2}$ lb. 45c; lb. \$1.40.

***TABLE QUEEN or ACORN**—A miniature squash growing about 7 inches long and 4 to 5 inches thick. Thin shelled; dark green; early maturing. Desirable for home and market garden, also for shipping. True seed of our own growing.

***GENEVA DELICATA**—Color cream, mottled and striped with green. A larger and more prolific strain of this popular squash developed at New York Exp. Station. Very attractive, and excellent quality. Recommended for home and market gardens. Postpaid. Pkt. 15c; $\frac{1}{2}$ lb. 50c; lb. \$1.50.

BOSTON MARROW—Skin and flesh reddish yellow. Postpaid. Pkt. 5c; oz. 15c; $\frac{1}{2}$ lb. 35c; lb. \$1.00.

DELICIOUS—An extra sweet, fine-grained, dry cooking squash. Medium size, top shaped with greenish-black skin; flesh very thick, orange colored with small seed cavity.

***BANANA**—This valuable squash is in great demand and we have a very fine strain. The exterior of the skin is grayish-green color, while the meat is a rich orange. The average size is from twenty-four to thirty inches in length and six inches in diameter.

RED BANANA—Same as above except skin reddish orange.

***BABY HUBBARD or KITCHENETTE HUBBARD**—They average about 6 to 8 pounds each. On account of their small size and heavy weight they are especially suited for crating.

***BLUE HUBBARD**—Colby's strain. Large size and extra fine flavor.

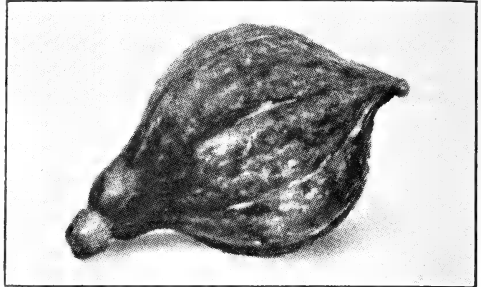
***TRUE HUBBARD**—Selected strain, and while we do not consider it equal to Delicious in flavor, it is a heavier yielder and better known in the market. We have a true stock of seed carefully selected for color, shape and quality.

***VERMONT HUBBARD**—Same season, shape and color as True Hubbard, but averages 6 to 10 pounds each and very high in quality. Postpaid. Pkt. 10c; oz. 25c; $\frac{1}{2}$ lb. 50c; lb. \$1.50.

***YAKIMA MARBLEHEAD**—Large slate colored variety of fine quality. It produces heavy yields of thick meated squash. Popular shipping variety. Postpaid. Pkt. 5c; oz. 20c; $\frac{1}{2}$ lb. 50c; lb. \$1.50.

SUNFLOWER

MAMMOTH RUSSIAN—This is one of the heaviest yielders and produces extra large heads, well filled with large, plump seed. Postpaid. Oz. 5c; lb. 35c. Not prepaid, lb. 25c; 10 lbs. @ 17c lb.



Squash, True Hubbard

SUMMER SQUASH

FORDHOOK ZUCCHINI—A.A.S. '42. A long, streamlined, black Zucchini. Heavy bearing, bushy plants. Market size is about 12 by 2 inches. At this size it seems to have less mature seeds, more tender flesh and more attractive shape. Extra fine flavor and quality. Postpaid. Pkt. 15c.

ZUCCHINI (Italian Squash) — It should be eaten quite young, when 3 to 6 inches long. The color is mottled deep green. Easy to grow. Postpaid. Pkt. 5c; oz. 20c; $\frac{1}{2}$ lb. 45c; lb. \$1.40.

BLACK ZUCCHINI—Like above, except much darker green color. Postpaid. Pkt. 5c; oz. 20c; $\frac{1}{2}$ lb. 45c; lb. \$1.40.

COCOZELLE or ITALIAN MARROW—Dark green when young, changing to lighter green as it matures. One of the earliest kinds and of high quality. Postpaid. Pkt. 5c; oz. 20c; $\frac{1}{2}$ lb. 45c; lb. \$1.40.

GIANT SUMMER CROOKNECK—Grows larger than the common sort. Golden yellow and thickly warted. Postpaid. Pkt. 5c; oz. 25c; $\frac{1}{2}$ lb. 45c; lb. \$1.40.

GIANT SUMMER STRAIGHTNECK—A selection from the Crookneck strain. More uniform thickness and packs to better advantage. Well warranted and good quality. Postpaid. Pkt. 5c; oz. 20c; $\frac{1}{2}$ lb. 45c; lb. \$1.40.

MAMMOTH WHITE BUSH SCALLOP—Early; large, pure waxy white skin; somewhat flattened in shape. Postpaid. Pkt. 5c; oz. 20c; $\frac{1}{2}$ lb. 45c; lb. \$1.40.

SQUAGHETTI—Smooth creamy skin like a vegetable marrow. When cooked whole for 20 minutes and cut open, the flesh is in loose shreds like spaghetti and very tasty when seasoned. Do not use until fully matured. Matures in about 60 days and keeps well in storage. Postpaid. Pkt. 10c; oz. 25c.

Tomatoes

CULTURE—Plant seed in box inside or in hotbed from February 15 to March 1. Transplant May 10 to 20; rows 6 feet wide and 5 to 6 feet in rows; use light, loamy soil, well cultivated and fertilized.

***GILL'S SELECTED EARLIANA**—For years we have given personal selection to this strain and believe we now have the largest and smoothest first early tomato yet offered. The fruit is of bright deep red color, rather thick from stem to blossom and unusually solid. Owing to the fact that it is a shy seeder we must ask more for the seed than other sorts. Do not confuse this with the ordinary strains of Earliana. Reports from the large growers claim this is the best strain of Earliana they have tried. Also reports from hot climates indicates it is unusually successful. One grower picking continuously from July until November; storing green ones then for December supplies. This is made possible by a minimum of cracked fruits. Postpaid. Pkt. 10c; $\frac{1}{2}$ oz. 25c; oz. 75c; $\frac{1}{4}$ lb. \$2.00.

***HILL SELECTED EARLIANA**—Saved from special plants marked in the field. Postpaid. Pkt. 25c; $\frac{1}{2}$ oz. \$1.25; $\frac{1}{4}$ oz. \$2.25; oz. \$4.00.

(Tomatoes—Continued)

***WASATCH BEAUTY**—In 1939, we introduced this remarkable tomato. It is early in maturity and very heavy bearing. The branches terminate in a cluster of fruit making a compact plant and more plants may be set per acre. The fruit is round, firm and smooth; of a beautiful red color, and borne in clusters of three to six good sized tomatoes. It is an especially good shipping and canning variety. Both market and home gardeners should try this outstanding new tomato. Postpaid. Pkt. 10c; ½ oz. 35c; 1 oz. 60c; oz. \$1.00; 1 lb. \$3.00.

***RED HEART**—We also introduced this tomato with flesh the deepest red in color yet found. One that is heavy bearing, long keeping, globe shaped. It is sure to be a valuable shipping and canning variety. Postpaid. Pkt. 10c; oz. 50c; ½ lb. \$1.50.

RUTGER'S (Certified Seed)—Notable for high yield and uniform ripening of medium to large fruits of fine quality. Shape similar to Marglobe, but more flattened at the stem end. Especially recommended for commercial canning and juice. Postpaid. Pkt. 10c; ½ oz. 30c; oz. 50c; 1 lb. \$1.50.

SCARLET DAWN—Medium vines, very prolific. Medium large fruit, smooth, globular; attractive bright scarlet. Fine quality and flavor. Desirable for home garden, shipping and canning. Postpaid. Pkt. 10c; ½ oz. 30c; oz. 50c; 1 lb. \$1.50.

BREAK O'DAY—Ten to twelve days earlier than Marglobe. Solid fruit of bright scarlet; very few seeds. Disease resistant. Desirable for home canning. Postpaid. Pkt. 10c; ½ oz. 35c; oz. 60c; 1 lb. \$1.75.

***POTENTATE**—Exceptionally heavy bearing greenhouse tomato. Fruits smooth, bright red, medium size, and very uniform. Postpaid. Pkt. 25c; ½ oz. \$1.25; 1 oz. \$2.25; oz. \$4.00.

THE PRITCHARD (Scarlet Topper)—In earliness similar to Break O'Day. Exterior and interior color intense scarlet. Fruit globe shaped and very solid. A tremendous cropper. Postpaid. Pkt. 10c; ½ oz. 25c; oz. 40c; 1 lb. \$1.25.

JOHN BAER—Extra early, large, bright scarlet fruit, smooth and firm. Postpaid. Pkt. 10c; oz. 45c.

***PEPPER TOMATO**—We have selected this for several seasons and now have heavy yields of large, smooth fruit, ideal for market. It is very resistant to rain cracks. Practically every fruit is smooth, running from globe to oblong shape, and they are exceptionally solid, containing very little seed. The fruit is red with a pink tone and the sweetest of any we have tried, being unusually free of acid. Ideal for tomato juice and by far the best for slicing. Postpaid. Pkt. 10c; ½ oz. 40c; oz. 75c; 1 lb. \$2.50.

BONNY BEST—We carry an extra fine strain of this early variety. Medium sized, uniform fruit of bright scarlet. Postpaid. Pkt. 5c; oz. 35c; 1 lb. \$1.15; lb. \$3.50.

BONNY BEST (certified seed)—Postpaid. Pkt. 10c; oz. 50c; 1 lb. \$1.50; lb. \$4.50.

STOKESDALE—Matures a week to 10 days earlier than Marglobe, also larger. Almost free of stem-end crack. Produces heavy crops. Postpaid. Pkt. 10c; oz. 50c; 1 lb. \$1.50; lb. \$5.00.

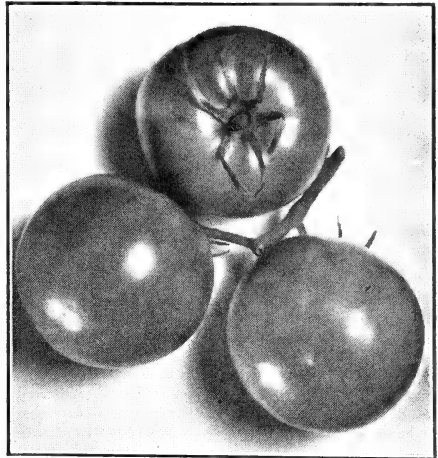
MARGLOBE—Almost the same season as Bonny Best, but the fruit is larger. Very resistant to disease and a very heavy cropper. Postpaid. Pkt. 5c; oz. 35c; 1 lb. \$1.15; lb. \$3.50.

DWARF STONE—Tree type plants, producing large, smooth, meaty fruit of bright red color. Postpaid. Pkt. 10c; oz. 45c.

MINGOLD—A.A.S. '40. An early yellow tomato of fine flavor and quality. Medium large, solid fruits. Postpaid. Pkt. 10c; ½ oz. 40c; oz. 75c.

PEAR TOMATO—Popular for preserves and mature heavy yields quite early. We can supply both red and yellow. Postpaid. Pkt. 5c; oz. 50c.

GROUND CHERRY or HUSK TOMATO—Prized for preserves, pie or sauce. Will keep into the winter. Fruit yellow. Postpaid. Pkt. 5c; oz. 50c.



Pepper Tomato

Turnips

Sow broadcast from August 1 to September 1 for late turnips. Milan varieties can be sown as late as October 1.

PRICES—Unless noted are uniformly: Postpaid. Pkt. 5c; oz. 10c; 1 lb. 30c; lb. 80c.

EXTRA EARLY WHITE MILAN—Among the earliest; roots clear white, smooth, flat and good quality. The best for early planting and late fall sowing. Postpaid. Pkt. 5c; oz. 20c; 1 lb. 45c; lb. \$1.25.

EXTRA EARLY PURPLE TOP MILAN—Similar to Extra Early White Milan except the roots are flatter and are attractive purple red on the upper portion. Postpaid. Pkt. 5c; oz. 20c; 1 lb. 45c; lb. \$1.25.

EARLY SNOWBALL—An extra early, round turnip, snow white, crisp and solid.

POMERANEAN WHITE GLOBE—Good either for stock or table and resists the worms the best. One of the best keepers.

PURPLE TOP WHITE GLOBE—The best all-around turnip for fall and winter use. Its beautiful color, pure white with purple top, combined with its smooth globe shape, fine sweet flavor and its wonderful productiveness put this turnip in the top class for market or home use.

WHITE EGG—Pure white, egg shaped; early.

COW HORN—A large, long-rooted, white turnip.

SHOGOIN (Foliage Turnip)—A Japanese variety, very popular for greens. The leaves grow upright about 2 feet high. Roots semi-globe, pure white, tender, sweet. Postpaid. Pkt. 5c; oz. 15c; 1 lb. 40c; lb. \$1.25.

RAPA—An Italian vegetable of the turnip family. Provides greens for fall, winter and spring use that are far superior to the usual turnip greens. Postpaid. Pkt. 10c; oz. 20c; 1 lb. 50c.

YELLOW FLESHED TURNIPS

***YELLOW BORTEFELDER**—A heavy cropping, long-keeping variety, in favor with dairymen.

ORANGE JELLY or GOLDEN BALL—The best yellow sort for market or family use. Roots medium sized, round and smooth, with yellow skin and flesh. One of the best for winter keeping.

PURPLE TOP YELLOW ABERDEEN—Extensively grown for stock feeding. Good keeper.

RUTABAGA—See page 13.

TOBACCO

CONNECTICUT SEED LEAF—The earliest maturing sort for the Northwest. Pkt. 10c; oz. 75c.

INOCULATE ALL LEGUME SEEDS WITH

NITRAGIN

1898—FORTY-FOUR YEARS OF SERVICE—1942

When ordering, Always state name of seed.

ALFALFA, all Clovers

Size	Retail
½ bu. each...	\$.30
1 bu. each...	.50
2½ bu. each...	1.00

PEAS (All Varieties) VETCHES (All Varieties)

½ bu. each...	\$.25
1 bu. each...	.35
1½ bu. each...	.50
12½ bu. each...	3.50

BEANS String, Wax, Kidney

½ bu. each...	\$.25
1 bu. each...	.35
1½ bu. each...	.50

*The 30 bu. size as listed above is a carton which contains six 5 bu. size cans.

LESPEDEZA

Size	Retail
Small (Inoculates up to 50 lb. seed).....	\$.35
Large (Inoculates up to 100 lb. seed)....	.50

SOYBEANS, LIMA BEANS, COW PEAS, PEANUTS

Small, (Inoculates up to 120 lb. seed) \$.30
*5 bu. each.....	.55
25 bu. each.....	2.50
(One can)	
*30 bu. each.....	3.25
(6-5 bu. cans)	

GARDEN SIZE Garden Peas & Beans Sweet Peas & Lupines

Enough for 6 lbs. seed
Retail Price 10c each



Plant Protectors

Protect the Cabbage and Cauliflower Plants
The Maggot Fly is the greatest pest to these plants and "Keepway Plant Protectors" will give the plants 90 to 100% protection. The size of the Protector is 3" by 3", and will cost as follows, postpaid to the fourth zone, beyond which send additional; package of 24 for 10c; 72 for 25c; 144 for 45c; 500 for \$1.25; 1000 for \$1.95. Write for prices on larger quantities.

Semesan

SEMESAN—A general disinfectant for vegetable and flower seeds or bulbs, and certain plant diseases. Postpaid, 1/3 oz. Pkt. 10c; 2 oz. can 40c; 1 lb. can \$2.50.
SEMESAN BEL—A dip disinfectant for seed potatoes. Postpaid, 2 oz. Pkt. 30c. Not prepaid, 1 lb. can \$1.05.
SEMESAN, JR.—A dust disinfectant for seed corn. Postpaid, 1½ oz. Pkt. 15c. Not prepaid, 1 lb. can 75c.
NEW IMPROVED CERESAN—A low cost dust disinfectant for wheat, oats and barley. Postpaid, 4 oz. can 30c. Not prepaid, 1 lb. can 80c; 5 lb. can \$3.40. Write for further description, directions for use and prices on quantities. It is not expensive.

Our system for growing cabbage, broccoli, and cauliflower plants enables us to ship long distances.

VEGETABLE PLANTS

NO PLANTS SENT C. O. D. — 500 PLANTS WILL BE SUPPLIED AT THE 1000 RATE
EARLY CABBAGE—Grown in the open ground and wintered over. Good, strong, healthy plants ready November 1st to April 15th. Can be shipped anytime weather permits. **EARLY JERSEY WAKEFIELD, PORTLAND ROUNDHEAD, GILL'S OREGON BALLHEAD, LARGE WAKEFIELD, DANISH BALLHEAD, DANISH ROUNDHEAD, and JERSEY KALE**—Postpaid. Doz. 25c; 3 doz. 50c; 100 @ \$1.25. Not prepaid, 100 @ \$1.00; 1000 @ \$4.00.
EARLY CAULIFLOWER—Greenhouse grown, ready March 15th to April 15th.
EARLY SNOWBALL—Postpaid. Doz. 40c; 3 doz. 80c; 100 @ \$2.00.
LATE CABBAGE—Well headed plants grown in the open. Ready June 10th to September 1st.
GILL'S OREGON BALLHEAD, DANISH ROUNDHEAD, GLORY OF ENKHUIZEN, DANISH BALLHEAD, ALL HEAD EARLY, COPENHAGEN MARKET, RED CABBAGE, SAVOY—Postpaid. Doz. 20c; 3 doz. 50c; 100 @ \$1.00. Not prepaid, 100 @ 75c; 1000 @ \$3.25; 5000 @ \$3.00 per 1000.
LATE CAULIFLOWER—Grown in the open. Ready June 20th to August 15th.
NOVEMBER-DECEMBER, GREEN BROCCOLI, ST. VALENTINE BROCCOLI. Postpaid. Doz. 25c; 3 doz. 60c; 100 @ \$1.50. Not prepaid, 100 @ \$1.25; 1000 @ \$4.50.
BRUSSELS SPROUTS—Ready June 20th to August 15th. Prices same as late cabbage.
KALE PLANTS—Grown in open. Ready June 10th to September 1st.
TALL SCOTCH CURLED, DWARF GERMAN, JERSEY KALE, GEORGIA COLLARDS, WINTER PROOF THOUSAND HEADED KALE—Same price as late cabbage plants. Ready same season.
PEPPER PLANTS—Ready May 1st to June 15th—**CALIFORNIA WONDER, HARRIS EARLY GIANT, OAKVIEW WONDER**—Postpaid. Doz. 40c; 3 doz. 80c; 100 @ \$2.00.
TOMATO PLANTS—Frame or greenhouse grown. Ready April 25th to June 15th.
GILL'S SELECTED EARLIANA, BONNY BEST, THE PRITCHARD, BREAK O' DAY, RUTGER'S, WASATCH BEAUTY, RED HEART, SCARLET DAWN, PEPPER TOMATO—Postpaid. Doz. 40c; 3 doz. 80c; 100 @ \$2.00. For quantity, please write.
CELEBY—**UTAH JUMBO and GOLDEN SELF BLANCHING TALL**—Transplanted. Ready March 15th. Postpaid. Doz. 30c; 3 doz. 60c; 100 @ \$1.50. Field grown. Ready June 1st. Not prepaid, 1000 @ \$6.00.

BERRY PLANTS

THORNLESS BOYSENBERRY—Same large vines and berries, but a few days earlier than the regular thorny Boysenberry. Has the advantage of lengthening the season as well as no thorns. Postpaid, 1 yr. tips, each 35c; 3 for \$1.00; 10 for \$2.50; 100 for \$17.50.
BOYSENBERRY (Thorny) and YOUNGBERRY—Postpaid, 1 yr. tips, each 25c; 3 for 50c; 7 for \$1.00; 12 for \$1.50; 100 for \$7.00; 1000 for \$60.00. (50 at 100 rate; 500 at 1000 rate). 680 plants per acre.
NECTARBERRY—A large vine berry about the same size as Boysenberry, but beginning to bear just about the time Boysenberries are through. Flavor resembles a blend of Youngberry and Red Raspberry. Postpaid, 1 yr. tips, each 25c; 7 for \$1.50; 12 for \$2.50.
BAUER THORNLESS LOGANBERRY (Patented)—Thrifty, heavy bearing loganberries without the thorns. Postpaid, 1 yr. tips, each 25c; 10 for \$2.00; 100 for \$15.00.

GRASS, CLOVER, ALFALFA and GRAIN SEEDS

We can supply various grasses, clovers, alfalfa and grain seeds. We can also supply mixtures. Write for prices. State nature of your soil and requirements.
Write us for prices on VETCH, EMMER, SUDAN GRASS, MILLET, FIELD PEAS, BUCKWHEAT, CHEAT GRASS, FETERITA, FLAX, DWARF ESSEX RAPE, SOY BEANS, and SUGAR CANE.
Prices are usually changing throughout the season, so we do not quote them here, but will be glad to quote prices, or you may remit what you desire and we will fill the amount according to market prices. We will also mail samples. We handle only high-grade seeds.

HIGH GRADE LAWN GRASS

WRITE FOR PRICES ON QUANTITIES. We supply grasses for golf courses. Let us figure with you. Prices quoted are subject to market change without notice.

Prices marked postpaid apply up to and including fourth zone, beyond which send additional. We specialize in high-grade lawn grass seed. During the past few years, we have supplied lawn seed for some of the largest institutions in the state. Whether it is a small lawn or a large one, we can supply the seed and we will be glad to quote you either on mixtures or separate grasses. Many of the lawn grass mixtures on the market contain rye grass seeds. We consider rye grasses too coarse and too rapid of growth to be included in mixtures and therefore do not use them in our mixtures. In estimating the ground to be planted figure on one pound to 300 square feet of surface.

GILBRO SPECIAL—This super mixture is composed of the finest bladed grasses and are selected on account of their great endurance. It will make a soft velvety lawn of uniform texture and appearance. All varieties in this mixture are acid-loving grasses, thus they respond rapidly with acid fertilizers which in turn reduces the weed menace. We have many reports from our customers, who are highly pleased with this mixture. It is adapted to shade or sun. We offer it either with or without white clover. Please specify when ordering. This mixture contains 40% creeping bent, making it necessary to ask the following prices: Postpaid. Lb. \$1.00. Not prepaid, 5 lbs. @ 90c; 10 lbs. @ 85c.

OREGON LAWN MIXTURE—A very good mixture made from pure grasses. It does not contain any rye grasses. We have sold this for years with fine results. It makes a hardy, fine-bladed turf well suited to the average soils. We offer it with white clover or without. Please specify when ordering. Postpaid. Lb. 85c. Not prepaid, 5 lbs. @ 75c.

***ASTORIA BENT (Blue Tag grade)**—A native acclimated sort grown in Clatsop County, Oregon. Besides creeping on the surface of the soil it has jointed roots that creep under ground. It is the best bent grass for high, well-drained soils and is very resistant to drought. It is often found growing in almost pure sand. It makes a thick, close turf, with fine leaf blades. Postpaid. Lb. \$1.20. Not prepaid, 5 lbs. or more @ \$1.10.

***SEASIDE BENT (Blue Tag grade)**—A native, acclimated variety, largely grown in Coos County. It creeps on the surface of the ground. Postpaid. Lb. \$1.20. Not prepaid, 5 lbs. @ \$1.10

KENTUCKY BLUE GRASS—A splendid general purpose grass for lawns, with hardy growth and fine, close turf. 21 lbs. per bushel grade. Postpaid. Lb. 50c. Not prepaid, 5 lbs. @ 40c.

BLUE GRASS and WHITE CLOVER—Well proportioned mixture. Postpaid. Lb. 70c. Not prepaid, 5 lbs. @ 60c.

ROUGH STALKED MEADOW GRASS (Poa-Trivialis)—Very hardy; makes a fine, close turf. Valuable in shade. Postpaid. Lb. \$1.00.

CHEWING'S FESCUE—Extensively used for lawns and golf courses. It makes a fine, close turf, very resistant to tramping. One of our finest grasses. Postpaid. Lb. 80c. Not prepaid, 5 lbs. @ 70c.

CREEPING FESCUE—Rich, fine bladed foliage, making a splendid turf for shade or sun. Especially suited to sandy soils, banks, and terraces. Postpaid. Lb. \$1.00. Not prepaid, 5 lbs. @ 90c.

WHITE CLOVER—Often used for lawns. We offer a fancy grade of seed for this purpose. Postpaid. Lb. \$1.00. Not prepaid, 5 lbs. @ 90c.

ENGLISH RYE GRASS—Rather coarse for lawns, but is often used for large parks. It should be sown very thickly for such purposes. Postpaid. Lb. 35c. Not prepaid, 5 lbs. @ 25c.

RED TOP—Valuable for shade and low, wet ground. Postpaid. Lb. 50c. Not prepaid, 5 lbs. @ 40c.

CUPROCID

Fungicide for seeds and foliage. Prevents damping off. 4 oz. can 35c; 1 lb. can 90c. Postpaid.

COMMERCIAL FERTILIZERS

WRITE FOR PRICES, STATING QUANTITY

Send for our free bulletin telling how to use fertilizers. We will gladly write you on any special fertilizer problem. Just tell us about your soil and what crop you intend to fertilize.

All prices quoted are NOT PREPAID and subject to market change without notice. Write for quantity prices.

ORGANIC FERTILIZERS

GILL'S GARDEN and LAWN DRESSING—A combination of Sheep Guano and chemical fertilizers that gives the necessary complete plant food with added stimulation of quick acting chemicals. Not prepaid, 70 lb. bag \$1.75.

5-10-7 (Garden Grow)—A complete general fertilizer suited for all around use in garden or orchard. Mainly organic. Postpaid, up to and including the Third Zone, 10 lb. bag, 75c. Not prepaid, 100 lbs. \$3.00.

BLOOD MEAL—12 to 15 ammonia. An organic form of nitrogen. Quick acting. Write for price.

FISH MEAL—Organic fertilizer high in nitrogen. Write for price.

SHEEP GUANO—Usually runs 2-1-2. Dry ground sheep manure taken from covered sheds. It is ground and sacked. On account of its high humus content it is a valuable fertilizer. Our stock is exceptionally good. Not prepaid, 100 lbs. \$1.50.

TANKAGE—A slaughter house by-product containing blood, meat and bone. Write for price.

3-10-10—Suitable for all root crops, cabbage, cauliflower and berries. Write for price.

ROOTONE

"The Hormone Powder"—Postpaid.

1/2 oz. Pkt. 25c; 2 oz. jar. \$1.00; 1 lb. can \$5.00.

No solutions, no measuring, just dust and plant. The 2 oz. jar treats up to 3000 cuttings.

PEAT MOSS

An excellent mulch or humus. Especially valuable for lawns. We carry a very fine grade. Not prepaid, Bale \$3.75.

MINERAL FERTILIZERS

LAND PLASTER or GYPSUM—This contains sulphur in soluble form and is valuable for all legumes, potatoes and general garden use. Not prepaid, 100 lbs. \$1.00.

LIME HYDRATED—Especially suited for using on acid soils. Not prepaid, 100 lbs. \$1.50.

MURIATE of POTASH—Write for price.

NITRATE of SODA—14 to 16 ammonia. Being soluble in water, it is a valuable fertilizer for the winter months applied on such crops as spinach, mustard greens, early spring cabbage, turnips, radishes, etc. Write for price.

SULPHATE of AMMONIA—Runs high in nitrogen. Write for price.

SUPERPHOSPHATE—16 to 21 phosphoric acid. It produces earlier maturity. Write for price.

VIGORO

Vigoro is the ideal plant food for lawns, flowers, gardens, shrubbery and trees. It is easy to apply; results are quick and certain.

Clean, dustless, weedless, and odorless! Vigoro is not to be compared with any other plant food you have ever known. It isn't at all costly. Prices not prepaid, 100 lb. bag, \$3.50; 50 lb. bag, \$2.30; 25 lb. bag, \$1.40; 10 lb. package 70c; 5 lb. package, 45c; 1 lb. package, 10c; tablets (package of 24), postpaid, 10c.

FLOWER SEEDS

(All Flower Seeds Postpaid)

Asters

GILL'S HIGH-GRADE ASTERS

†Marked are asters of the wilt-resistant strains.

We aim to supply the very best asters that can be grown or purchased, and the most up-to-date varieties and types will be found in our list. Asters are one of the best cut flowers that can be grown.

Sow seed in boxes inside or in frames, about February 25th to March 15th, and transplant during May. Splendid blooms can be obtained by planting the seed in the open about May 1.

†PRINCESS BONNIE—New. Full crested center with several rows of guard petals. Beautiful salmon rose. Pkt. 25c.

†PRINCESS MARSHA—New. Same formation as above. Scarlet with rich gold center. Pkt. 25c.

†PRINCESS ANNE—Sold out.

†EARLY GIANT PEACH BLOSSOM—Opens white, flushes lavender pink. Pkt. 15c.

†EARLY GIANT LIGHT BLUE—Clear, rich light blue; extremely large flowered. Pkt. 15c.

SUPER GIANT EL MONTE—Deep glowing crimson; flowers large and fluffy. Pkt. 15c.

SUPER GIANT LOS ANGELES—Pure shell pink, fully double. Excellent cut flower. Pkt. 15c.

IMBRICATED POMPON—Mixed colors. Pkt. 10c.

*OREGON LOVELINESS—This marvelous crego type aster originated in Oregon. The color opens rosy salmon with silvery reflection but as the flowers age, the color deepens to a rich coppery salmon. Pkt. 15c; $\frac{1}{2}$ oz. 60c.

†AURORA GOLDEN SHEAF—Deep yellow. Full crested center. Popular with florists. Pkt. 10c.

AURORA BLUE—Light blue with yellow center. Pkt. 10c.

GIANT MAMMOTH PAEONY FLOWERED—A superb florist strain. AZURE BLUE, PEACH BLOSSOM, PURPLE, †SILVER ROSE, WHITE and MIXED. Pkt. 10c.

†EARLY BEAUTY—Blooms with Crego type. MIXED. Pkt. 10c; $\frac{1}{2}$ oz. 35c.

†LATE BEAUTY—Blooms from September until frost. MIXED. Pkt. 10c; $\frac{1}{2}$ oz. 35c.

CALIFORNIA GIANTS—Immense flowers, often 5" to 6" across. Vigorous habit and long stems with Crego type of bloom. PEACH BLOSSOM, LIGHT BLUE, DEEP ROSE, †PURPLE, WHITE and MIXED. Pkt. 10c; $\frac{1}{2}$ oz. 40c.

†CALIFORNIA GIANT SINGLE—Flowers 3" to 4" across on 18" to 24" stems. WHITE, ROSE, FLESH, PURPLE, DEEP LAVENDER and MIXED. Pkt. 10c; $\frac{1}{2}$ oz. 30c.

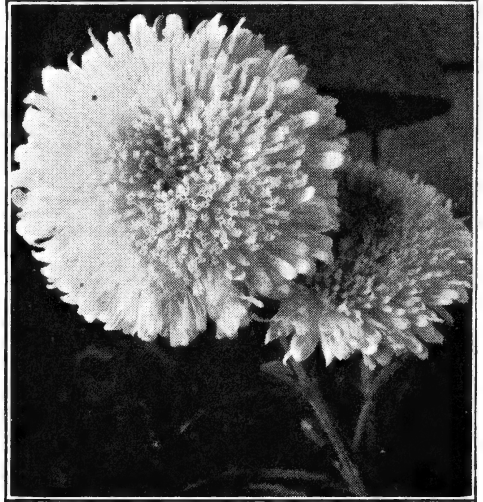
†GIANT CREGO—Immense fluffy flowers averaging 4" to 5" across. The plants produce an abundance of large flowers on good stems. SHELL PINK, ORCHID, WHITE, CRIMSON, AZURE BLUE, PEACH BLOSSOM, DEEP ROSE, DARK BLUE, ROYAL PURPLE and MIXED. Pkt. 10c; $\frac{1}{2}$ oz. 30c.

GILL'S FANCY MIXED—A mixture of all colors in popular types. Pkt. 10c; $\frac{1}{2}$ oz. 35c.

†HEART OF FRANCE—A beautiful rich dark red, $1\frac{1}{2}$ to 2' branching plants. Pkt. 10c.

CALIFORNIA GIANT SUNSHINE—Blooms 4" to 5" across, have a single row of loose, outer petals with contrasting yellow, quill-like center disc. Plants 2' to 3' high. WHITE, LAVENDER, ROSE, SHELL PINK, PURPLE and MIXED. Pkt. 15c.

HARDY PERENNIAL — (Michaelmas Daisy) — Single, fall flowering aster. MIXED. Pkt. 10c.



Aster, Princess Bonnie

NOVELTY ASTER COLLECTION

We offer any 10 packets of asters, your choice of those priced at 10c; sent postpaid for 65c.

ACANTHUS (Bear's Breach)

LATIFOLIUS, p—Giant decorative leaves 2' long and 1' wide. Pkt. 10c.

ACHILLEA

THE PEARL, p—Large clusters of small, double, pure white, everlasting flowers. Pkt. 10c.

ACONITUM (Monkshood)

NAPELLUS, p—Spikes of curious shaped blue flowers. Pkt. 15c.

ADONIS

FLOS, a—Small, brilliant scarlet flowers, suitable for borders and cutting. Pkt. 10c.

AFRICAN DAISY

Sow seed same as asters and plant in sunny position. They bloom all summer.

DOUBLE HYBRIDS MIXED, a—New. Double crested flowers $1\frac{1}{2}$ " across, ranging in color from deep salmon orange to white. Blooms profusely until late fall. Colorful in any garden. Pkt. 15c.

AURANTIACA, a—Flowers $2\frac{1}{2}$ " to 3" across of glossy orange. Pkt. 10c.

HYBRIDS MIXED, a—Shades of white, yellow, orange and salmon zoned with black disc. Pkt. 10c.

AGERATUM

Annual, suitable for boxes, pots and borders. MIDGET BLUE—New. Dwarf, 2" to 3"; fine foliage covered with blue flowers. Pkt. 15c.

BLUE PERFECTION—Dwarf, deep blue. Pkt. 10c.

MIXED—All colors. Pkt. 10c.

AMARANTHUS

Brilliant foliage annual, growing 3' to 5' high.

CAUDATUS—Blood red, drooping. Pkt. 10c.

ANCHUSA

DROPMORE VARIETY, p—Easily started from seed. 3' to 5' high, covered with rich gentian blue flowers during June and July. Pkt. 10c.

Symbols: a, Annual; p, Perennial; bi, Biennial; A.A.S., All-America Selection; ", Inches; ', Feet.

ALYSSUM

COMPACTUM VIOLET QUEEN, a—New. Very deep rich shade of violet. Neat habit, free flowering. Pkt. 25c.

LITTLE DORRIT, a—Miniature white. Pkt. 10c.

IMPROVED CARPET OF SNOW, a—Plant 2" high, massed with white blossoms. Pkt. 10c.

COMPACTUM YELLOW, a—Dwarf. Pkt. 10c.

LITTLE GEM, a—Dwarf compact, 4" high with white blossoms. Pkt. 10c; ½ oz. 25c.

LILAC QUEEN, a—Dwarf compact habit; flowers deep lavender. Pkt. 10c.

SAXATILE COMPACTUM, p—Masses of small yellow flowers in May. 1' high. Easy to grow. Pkt. 10c.

ANEMONE

PULSATILLA, p—Purple shades, blooming April and May. Pkt. 15c.

ST. BRIGID, p—Wonderful range of colors in single, semi-double and double. Pkt. 15c.

AQUILEGIA (Columbine)

Start inside or in open and transplant.

SCOTT ELLIOTT LONG SPURRED HYBRIDS, p—Excellent range of colors. MIXED. Pkt. 10c.

LONG SPURRED, p—Blue or pink shades. Pkt. 15c.

ARABIS (Rock Cress)

ALPINA, p—A mass of white flowers very early in the spring. Pkt. 10c.

ARCTOTIS (African Daisy)

GRANDIS, a—2' high. White petals with light lilac backs; sky-blue eye with yellow halo. Pkt. 10c.

ARMERIA

FORMOSA HYBRIDS, p—For rockeries and borders. Compact plant with clover-like flowers in pink shades. Pkt. 10c.

ASPARAGUS

PLUMOSUS, p—Fine greens for bouquets. Fern-like foliage, tender perennial, sow in pots. Pkt. 15c.

SPRENGERI, p—For baskets and window boxes. Pkt. 15c.

AUBRIETIA (Rainbow Rock Cress)

LARGE FLOWERING HYBRIDS, p—Colorful rockery and border plants. Sow in June. Pkt. 15c.

BALSAM

CAMELLIA FLOWERED MIXED, a—Double flowers. Grows 2' high. Plant in hot-bed in March; move after danger of frost. Pkt. 10c.

BEANS, SCARLET RUNNER

A fine annual climber. Pkt. 10c; ½ lb. 30c; lb. 45c.

BELLIS or ENGLISH DAISY

MONSTROSA DOUBLE, p—This giant type far exceeds the old type. Mixed. Pkt. 10c.

BOCCONIA (Plume Poppy)

CORDATA, p—3' cream-colored flower spikes. Glauous green foliage. Pkt. 10c.

BOLTONIA

LATISQUAMA, p—Large clusters of lilac pink, daisy-like flowers, blooming July to Sept. Pkt. 10c.

BRACHYCOME

SWAN RIVER DAISY, a—9" high. Mixed. Pkt. 10c.

BROWALLIA

FANCY MIXED, a—Blue and white petunia shaped flowers. Pkt. 10c.

CACTUS SEED

Perennial. All varieties mixed. Pkt. 15c.

CALENDULA, POT MARIGOLD, Annual

ORANGE FANTASY—Crested, coppery orange, petals edged mahogany red. Pkt. 10c.

ORANGE SHAGGY—Rich orange; petals long and deeply fringed. Pkt. 10c.

CHRYSANTHA—Clear buttercup yellow. Pkt. 10c.

RADIO—Rich orange; large quilled flowers. Pkt. 10c; ½ oz. 20c; oz. 50c.

CAMPFIRE IMPROVED, FLORIST STRAIN—Dark orange with scarlet sheen. Pkt. 10c; ½ oz. 30c.

ORANGE KING, FLORIST STRAIN—Large double flowers of orange red, with darker centers. Pkt. 10c; ½ oz. 20c; oz. 50c.

DOUBLE MIXED—All colors. Pkt. 10c.



Arctotis

CALIFORNIA POPPY, Annual

Plant during spring, summer or fall. Fall seedlings bloom in the spring.

DOUBLE GOLDEN GLORY—Golden yellow, orange at center. Pkt. 10c.

LOVELY—Carmine rose, suffused salmon. Pkt. 10c.

RAMONA—Coppery gold, frilled. Pkt. 10c.

SCARLET BEAUTY—Deep scarlet. Pkt. 10c.

GRANDIFLORA GIANTS—Mixed. Pkt. 10c.

DOUBLE MIXED—Pkt. 10c.

CALLIOPSIS, Annual

Showy blooms all summer. Sow in April.

GOLDEN CROWN—Semi-double; yellow with maroon center. Pkt. 10c.

CHOICE SINGLE MIXED—Pkt. 10c.

DOUBLE MIXED—Pkt. 10c.

CANDYTUFT

Fall sowings, flower in early spring; April sowings, in June.

GIANT HYACINTH, a—A selected strain, producing 6 to 7 large, erect, white spikes. Pkt. 10c.

FLESH PINK, a—A new shade. Pkt. 10c.

LAVENDER, a—Soft rose lavender. Pkt. 10c.

CRIMSON, a—Rich deep shade. Pkt. 10c.

MIXED, a—All colors. Pkt. 10c.

PERENNIAL (Iberis)—Mixed colors. Pkt. 10c.

CANNA SEED

MIXED, p—Plant inside in February; transplant after danger of frost. Seedlings are interesting. Pkt. 10c.

CANTERBURY BELLS

Plant in frame in early spring, or outdoors about June 1st. Cover seed lightly; putting paper over the surface until seed germinates.

ANNUAL MIXED—Bloom in 6 months. Pkt. 10c.

CUP and SAUCER BELLS, bi—The largest type, with cup and saucer-like flowers, **WHITE, LIGHT BLUE, DARK BLUE, ROSE and MIXED**. Pkt. 10c.

SINGLE MIXED, bi—Bell-shaped. Pkt. 10c.

PYRAMIDALIS MIXED, p—Pkt. 10c.

PEACH BELLS, p—Saucer-shaped flowers on tall spikes. **BLUE**. Pkt. 10c.

CARDINAL CLIMBER

HYBRIDA, a—Graceful, quick growing. Covered all summer with fiery scarlet blooms. Pkt. 10c.

CARNATION

Perennial, blooming the first season.

- GIANT FLOWERING — SCARLET, YELLOW, PINK, FLESH, ROSE, WHITE and MIXED. Pkt. 10c.
 MARGUERITE MIXED—Large flowers. Pkt. 10c.
 EVERBLOOMING—Almost continually in bloom from June to frost. Mixed colors. Pkt. 10c.
 FLORIST'S MIXTURE—A special mixture from florist sorts. Can be used inside or out. Pkt. 15c.

CASTOR BEANS

RICINUS, a—Ornamental plants valuable for tropical effects. Use in large beds or borders along paths and drives. Pkt. 10c; oz. 25c; 1 lb. 60c.

CELOSIA

Sow inside in March, transplant or sow outside in May. Very free flowering.

FLAME OF FIRE, a—Pyramidal branching plants. Branches bear large, oval, fiery scarlet head of coral-like structure. Pkt. 15c.

FIRE FEATHER, a—Dwarf, compact plants; 15-20 branches, with bright, silky plumes. Pkt. 10c.

EMPRESS (Cockscomb), a—Very wide combs, crimson. Pkt. 10c.

PLUMOSA (Improved Feathered Type), a—3', pyramidal growth. MIXED. Pkt. 10c.

CENTAUREA

ROYAL SWEET SULTAN, a—Beautiful, sweet-scented flowers, fine cut flowers. Sow early in spring. Finest mixed. Pkt. 10c.

WHITE LEAVED, p—(Dusty Miller). Pkt. 10c.

CERASTIUM (Snow in Summer)

TOMENTOSUM, p—Dwarf with silvery foliage and small white flowers. Pkt. 10c.

CHRYSANTHEMUM, Annual

SINGLE MIXED—Grows 2' high; blooms in mid-summer. White and yellow flowers; yellow to red zoned. Pkt. 10c.

DOUBLE MIXED—Yellow, white, etc. Pkt. 10c.

CINERARIA, Biennial

Beautiful greenhouse, or indoor flower, easily grown from seed. High-grade mixture. Pkt. 25c.

CLARKIA, Annual

Easily grown double flowers; 2', fine for cutting.

ALBA—White. Pkt. 10c.

ORANGE KING—Rich orange. Pkt. 10c.

PURPLE PRINCE—Fine rich purple. Pkt. 10c.

SCARLET QUEEN—Orange scarlet. Pkt. 10c.

SWEETHEART—Deep pink. Pkt. 10c.

DOUBLE MIXED—All shades. Pkt. 10c.

CLEOME (Spider Flower)

GIANT PINK QUEEN, a—A.A.S. '42. Hardy, 3' high; abundant blooms of salmon pink at top of spike, fading to flesh pink. For backgrounds or cutting. Pkt. 25c.

COLEUS

Attractive foliage annual. Easily grown. Start indoors in March. Mixed colors. Pkt. 15c.

COREOPSIS

DOUBLE SUNBURST, p—Deep golden yellow. Excellent cut flower. Pkt. 15c.

LANCEOLATA GRANDIFLORA, p—Large, showy, bright yellow. Pkt. 10c.

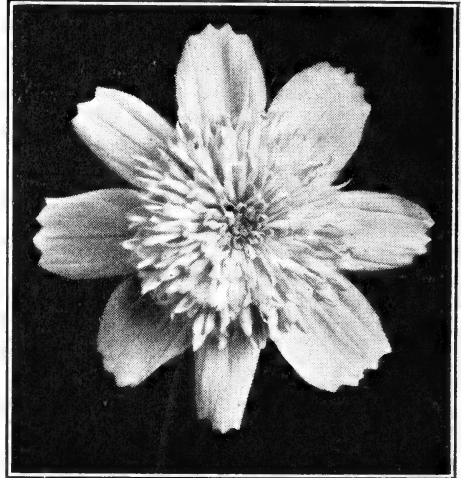
CORNFLOWER (Bachelor's Button)

DWARF JUBILEE GEM, a—Compact plants; covered with large, double blue flowers. Splendid for borders and cutting. Pkt. 10c.

DOUBLE BLUE, ROSE, or MIXED, a—Pkt. 10c.

CORN (Ornamental)

INDIAN, a—Bright colors, valuable for decorations in combination with gourds. MIXED. Pkt. 10c.



Cosmos, Peerless

COSMOS, Annual

Plant after danger of frost, blooms in the late fall. KLONDYKE YELLOW—A.A.S. '42. Rich golden yellow; 3' to 4' tall; free blooming. Slightly later than Orange Flare. Pkt. 25c.

PEERLESS MIXED—New type. Produces a large 2" crested center; a double form of the Sensation type. Pkt. 25c.

SENSATION SINGLE—Large blooms in ten weeks. CRIMSON, ROSE PINK, WHITE, and MIXED. Pkt. 10c.

EARLY KLONDYKE ORANGE FLARE—Early flowering, bright orange. Pkt. 10c.

EARLY DOUBLE CRESTED—Single outer row of large petals with full double center of short petals. PINK, CRIMSON, WHITE, and MIXED. Pkt. 10c.

MAMMOTH EARLY FLOWERING—Plant in open; blooms in 60 to 90 days. Flowers 4" to 5" across. WHITE, PINK, CRIMSON, and MIXED. Pkt. 10c.

CUCUMBER, WILD VINE

Quick growing annual. Foliage green with sprays of white flowers. Pkt. 10c.

CUPHEA

FIREFLY, a—Blooms in 14 weeks. Compact plants, small, cerise red flowers. For rocky or border. Pkt. 15c.

CYCLAMEN

GIANT MIXED, p—A splendid mixture of brilliant and soft shades from a highly selected strain. Pkt. 25c.

CYNOGLOSSUM

(Chinese Forget-me-not)

Annual. Sweet-scented blue. 2'. Pkt. 10c.

DAHLIA SEED, Perennial

Start like asters, transplanting about May 1st. *CHOICE MIXED—This mixture embraces many colors in different types. Pkt. 15c.

COLTNESS MIGNON MIXED—Dwarf single flowers, suited for bedding. Good cut flowers. Pkt. 15c.

*DECORATIVE MIXED—Seed saved from choice varieties. Pkt. 35c.

*DOUBLE CACTUS—Mixture from named sorts. Pkt. 35c.

*SINGLE, COLLARETTE or MINIATURE dahlia seed. Each Pkt. 15c.

DATURA

WRIGHTI, a—Trumpet flowers, 6" long, 5" across; 2' to 3' high; white with purple sheen. Pkt. 10c.

Symbols: a, Annual; p, Perennial;
 bi, Biennial; A.A.S., All-America Selection;
 ", Inches; ', Feet.

DELPHINIUM (Perennial Larkspur)

PACIFIC GIANTS—Extremely large; 100% double. Practically mildew resistant. **WHITE** and **MIXED**. Pkt. 50c.

IMPROVED BELLADONNA (Special Strain)—Light blue, large flowered, strong grower. Pkt. 20c.

IMPROVED BELLAMOSUM (Special Strain)—Deep blue. Blooms 2½" across. Pkt. 20c.

***GIANT PRIZE MIXED**—Selected from Wrexham type. Giant flowers of the Hollyhock strain in mixed colors of single and double. Pkt. 25c.

PASTEL SHADES—Specially selected from large type. Very popular shades. Pkt. 25c.

DIANTHUS, PINKS

LACINIATUS SPLENDENS, a—Crimson, with large white eye. Pkt. 10c.

SINGLE MIXED, a—1' high. Pkt. 10c.

DOUBLE DWARF CLOVE PINK MIXED, p—Compact growth; early flowering with a spicy clove fragrance. Pkt. 10c.

DIDISCUS, LACE FLOWERS

COERULEUS, a—Branched plants 18" high. Clusters of tiny, lacy flowers. Exquisite light blue. Pkt. 10c.

DIGITALIS, FOXGLOVE

GLOXINIAEFLORA MIXED, bi—Pkt. 10c.

SHIRLEY MIXED, a—Giant strain. Pkt. 10c.

ECHINOPS (Globe Thistle)

RITRO, p—3' to 5', silvery foliage, round, close blue flower heads. Pkt. 10c.

EUPHORBIA

Suitable for beds and borders.

VARIEGATA (Snow on the Mountain), a—Attractive green foliage, veined white; 2'. Pkt. 10c.

FOUR O'CLOCK

MIXED, a—Free flowering, does well anywhere. Very easy culture. Pkt. 10c.

FUCHSIA

MIXED, p—Fine selection of double and single types. Pkt. 25c.

GAILLARDIA

INDIAN CHIEF, a—Single, bronze red. Pkt. 10c.

DAZZLER, p—Giant gold and maroon red. Pkt. 10c.

PORTOLA HYBRIDS, p—Bronzy red, gold tipped. Pkt. 10c.

GERANIUM

ZONALE MIXED, p—A superb strain of the largest and finest. Start indoors. Pkt. 15c.

GERBERA (Transvaal Daisy)

JAMESONI HYBRIDS—Tender perennial. Large, daisy-like blooms in yellow to red shades, on long stems. Sow seed singly, point up, cover lightly, water sparingly in hot-bed. Likes sun; protect from rain. Pkt. 20c.

GEUM

MRS. BRADSHAW, p—Popular, semi-double flowers, 2" across, brilliant scarlet; fine cut flowers; easily grown. Blooms in June and July. Pkt. 10c.

LADY STRATHEDEN, p—Double yellow. Pkt. 10c.

GILIA

MICRANTHA, FAIRY STARS, a—Tiny, single star-like flowers in pastel shades; useful for borders and rockeries. Pkt. 10c.

GODETIA

Free flowering annual doing best in rather poor soil. Of easy growth and fine for cutting.

Dwarf Single Varieties

THURDERBOLT—Crimson. Pkt. 10c.

WILD ROSE—Pastel rose; wavy petals. Pkt. 10c.

MIXED—All shades. Pkt. 10c.

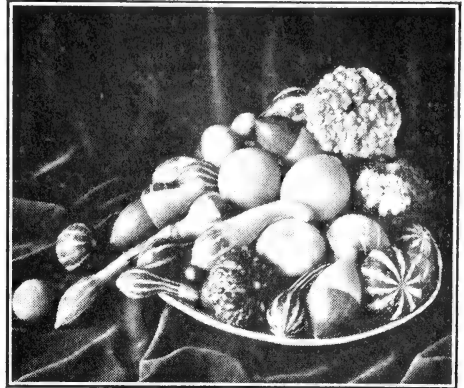
Tall Double Varieties

CHERRY RED—Deep red. Pkt. 10c.

LAVENDER—Highly recommended. Pkt. 10c.

RICH PINK—Clear deep pink. Pkt. 10c.

MIXED—Various shades. Pkt. 10c.



Small Mixed Gourds

GOURDS, ORNAMENTAL, Annual

Easily grown; must be fully ripened.

SMALL WARTED—All shapes. Pkt. 10c; oz. 30c.

SMALL MIXED—Main small sorts in mixture. Pkt. 10c; oz. 30c.

LARGE MIXED—Main large sorts in fine mixture. Pkt. 10c; oz. 30c.

GYPSOPHILA, BABY'S BREATH

REPENS ROSEA, p—Light rose, rock plant, 6" high. Pkt. 10c.

PACIFICA, p—These rose-colored flowers bloom first season from seed. Pkt. 15c.

ELEGANS ALBA, a—Small white clusters for mixing with bouquets. Pkt. 10c; oz. 30c.

PANICULATA, p—Single. Pkt. 10c.

PANICULATA DOUBLE, p—A large per cent come with double white flowers. Pkt. 15c.

HELIANTHEMUM (Sun Rose)

MUTABILE, p—Rock plant. Pkt. 10c.

HELICHRYSUM

STRAW FLOWER MIXED, a—Fine everlasting flowers; bright colors for winter bouquets. Pkt. 10c.

HELIOTROPE

Start indoors, plant out in May.

LEMOINES GIANT, p—Extra large. Pkt. 10c.

HEUCHERA (Coral Bells)

SANGUINEA SPLENDENS, p—18" high. Coral-red flowers, blooming in July and August. Pkt. 15c.

HIBISCUS, MARSH MALLOW

MAEVEL MIXED, p—Easily grown giant types; 3" to 5" flowers. Blooms in September. Pkt. 10c.

HOLLYHOCK

CHATER'S DOUBLE, p—Easily grown. Maroon, pink, rose, white, yellow, scarlet & mixed. Pkt. 10c.

INCARVILLEA (Hardy Gloxinia)

DELAVAYI, p—Hardy on Western coast. Rose flowers on 15" stems. Blooms in June and July. Pkt. 10c.

IRIS

JAPANESE MIXED, p—Blooms in 2 yrs. Pkt. 15c.

KOCHIA (Burning Bush)

Annual, symmetrical oval plants, 3' tall, resembling an ornamental evergreen. Fine for hedges. Turns deep red in late fall. Pkt. 10c; ½ oz. 20c.

KUDZU VINE

Fragrant wisteria-like flowers, large green leaves, dense shade. Easily grown perennial. Pkt. 10c.

LANTANA

MIXED, a—Half hardy greenhouse or bedding plant. Verbena-like heads of orange, white, rose, etc. Pkt. 10c.

LATHYRUS

(Perennial Sweet Peas)

MIXED—Strong growing hardy climber easily started from seed. Fine for cutting. Pkt. 10c.

LAVENDER

VERA, p—Fragrant, hardy 3' plants. Pkt. 10c.

LARKSPUR, Annual

2' to 3' high, splendid for beds or cutting. Plant September or early spring.

DOUBLE STOCK FLOWERED TYPE

LUSTROUS CARMINE—Carmine rose. Pkt. 10c.
ROSAMOND—Deep pure pink. Pkt. 10c.

GIANT IMPERIAL TYPE

PINK KING—New. Soft salmon rose. Pkt. 15c.
CORAL KING—Coral pink. Pkt. 10c.
WHITE KING—Glistening white. Pkt. 10c.
BLUE BELL—Azure blue. Pkt. 10c.
BLUE SPIRE—Large deep blue. Pkt. 10c.
EXQ. PINK IMPROVED—Soft pink. Pkt. 10c.
LILAC SPIRE—Soft lilac. Pkt. 10c.
PINK PERFECTION—Light pink. Pkt. 10c.
GIANT IMPERIAL MIXED—All colors. Pkt. 10c.
DWARF DOUBLE MIXED—Pkt. 10c.

LILY

REGALE, p—Beautiful hardy lily, large trumpet-shaped, sweet-scented flowers. Ivory white, tinged pink, with yellow throat. Pkt. 10c.

LINARIA

HYBRIDA MIXED, a—Like a miniature snapdragon. Brilliant colors. Pkt. 10c; 1 oz. 35c.

LINUM

Graceful in rockeries and borders.

BLUE FLAX, p—Blue, 2'. Pkt. 10c.
FLAVUM, p—Golden yellow, 12". Pkt. 15c.
GRANDIFLORUM RUBRUM (Scarlet Flax), a—1 1/2' high. Pkt. 10c.

LOBELIA, Annual

Used for pots, edges or hanging baskets.

CRYSTAL PALACE COMPACTA—Best dark blue. Dwarf compact plants. Pkt. 10c.
HAMBURGIA—Large light blue with white eye. Trailing. Pkt. 15c.
SPECIOSA—Dark blue flowers and dark foliage. Trailing. Pkt. 10c.
DWARF MIXED—All colors. Pkt. 10c.

LUNARIA (Money Plant)

HONESTY, bi—Silvery, translucent, oval seed pods, prized for winter bouquets. It may be an annual if sown early. Pkt. 10c.

LUPIN

RUSSELL'S GREEN SEAL (Re-selected) STRAIN, p—Pkt. 20 seeds 25c.
RUSSELL'S BLUE SEAL (Originator's) STRAIN, p—Pkt. 12 seeds 10c.
ANNUAL MIXED—Easily grown; spikes of pea-shaped blooms 2' high. Pkt. 10c.
PERENNIAL LUPIN—Hardy plants with 3' spikes blooming May and June. Mixed. Pkt. 10c.

MIGNONETTE

Keep a succession by sowing in April and July.
DEFIANCE MIXED, a—Extra large spikes, 15" to 18" long, deliciously fragrant. Pkt. 10c.

MORNING GLORY, Annual

PEARLY GATES—A. A. S. '42. Superb blossoms about 4 1/2" across. Lustrous white, creamy shaded throat. Vigorous fast climbing vines. Pkt. 25c.
SCARLETT O'HARA—Rich dark wine red color. Blooms in 65 days, prefers sandy soil. Pkt. 15c.
HEAVENLY BLUE—Climbing. Pkt. 10c.
CLIMBING MIXED—Pkt. 10c.
IMPERIAL JAPANESE—Large fringed flowers, in various colors. Climbing. Pkt. 10c.

MYOSOTIS, FORGET-ME-NOT

ALPESTRIS BLUE, bi—Compact, upright growing. Easily grown from seed. Pkt. 10c.
EVERBLOOMING, bi—Blue. Pkt. 10c.

MARIGOLD, Annual

BUTTERBALL—A.A.S. '42. Dwarf double French Harmony type. Covered with 2" blooms of soft butter yellow, lightly tipped with maroon. Pkt. 25c.

MISSION GIANT YELLOWSTONE—A.A.S. '42. Clear golden yellow blooms, 4" to 5" wide, resembling an incurved chrysanthemum on 8" to 12" stems. Pkt. 25c.

MISSION GIANT GOLDSMITH—A.A.S. '41. Rich golden orange, incurved. Pkt. 15c.

GIGANTEA POT O'GOLD—New. Neat, growing 12" to 15", bearing 12 or more large blooms. Deep golden orange. Pkt. 15c.

SCARLET GLOW—A.A.S. '41. Double French variety. Bronzy-red blooms, on 12" stems. Pkt. 15c.

IDABELLE FIRESTONE—New. African-French hybrid type. Fully double, 2", bright reddish mahogany blooms. Plants 3' tall. Pkt. 15c.

SPRY—A.A.S. '41—Dwarf Double French. Blooms in less than 9 weeks. 1 1/2" to 1 3/4" flowers of clear yellow crested centers with rows of mahogany guard petals. Pkt. 15c.

AMERICAN BEAUTY (Chrysanthemum Flowered Incurved)—New type. Fully double. Shades of orange and yellow mixed. Pkt. 10c.

CROWN OF GOLD—Collarete type, odorless; orange. Pkt. 10c.

GIGANTEA SUNSET GIANTS—Fragrant flowers, shades of orange to light yellow. 3' to 4'. Pkt. 10c.

GUINEA GOLD—African. Brilliant double orange. Pkt. 10c.

LARGE AFRICAN—Double. LEMON, ORANGE, and MIXED. Pkt. 10c.

DWARF AFRICAN—Double. MIXED. Pkt. 10c.

SUPER HARMONY—French type. Over 100 florets make the head, forming golden crown 1 1/2" wide, surrounded by red-brown guard petals. Blooms profusely. Pkt. 10c.

DWARF DOUBLE HARMONY—French. Charming Scabiosa-like flowers; golden yellow bordered with a rich maroon red. Early, bushy plants for cutting or bedding. Pkt. 10c.

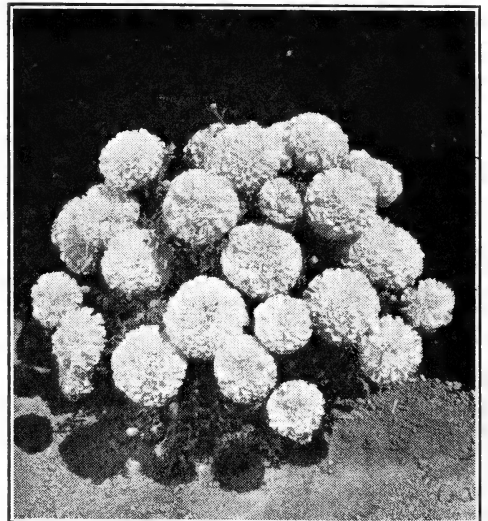
GOLDEN GEM—French. Dwarf single. Pkt. 10c.

TALL FRENCH MIXED—Double. Pkt. 10c.

DWARF DOUBLE MIXED—Pkt. 10c.

MATRICARIA

CAPENSIS DOUBLE WHITE, p—2', splendid cut flowers. Pkt. 10c.



Marigold, Gigantea Pot O'Gold

NASTURTIUM, Annual

Sow in April, thin to 2" or 3".

Dwarf Varieties

CHERRY ROSE—New. Double blooms. A new shade in the gem type. Pkt. 20c.

SCARLET EMPEROR—Double blooms. Dark foliage, compact plants. Pkt. 15c.

DOUBLE GEM MIXTURE—Compact plants with no runners; excellent for borders. Pkt. 10c; oz. 25c.

FINEST MIXED—All colors. Pkt. 5c; oz. 15c; 1 lb. 40c.

Tall Varieties

DOUBLE INDIAN CHIEF—New. Sweet-scented, large brilliant scarlet, dark foliage. Pkt. 10c.

DOUBLE MAHOGANY—Large, sweet-scented, dark mahogany red. Pkt. 10c.

DOUBLE GOLDEN GLEAM—Large, sweet scented yellow. Pkt. 10c; oz. 25c; 1 lb. 75c.

DOUBLE GLEAM HYBRIDS—Gorgeously colored, large, sweet scented blooms. Pkt. 10c; oz. 25c.

CALIFORNIA GIANTS MIXED—All colors. Pkt. 5c; oz. 15c; 1 lb. 40c.

NEMESIA

LARGE FLOWERING MIXED, a—Suited to cool places. 1' tall orchid-like flowers in scarlet, rose, blue, orange, etc. Pkt. 10c.

NEMOPHILA

Hardy annual. Easy culture. Useful for borders.

INSIGNIS BLUE (Baby Blue Eyes)—Pkt. 10c.

INSIGNIS MIXED—Mixed colors. Pkt. 10c.

NICOTIANA, FLOWERING TOBACCO

FINEST MIXED, a—All shades. Pkt. 10c.

NIEREMBERGIA

PURPLE ROBE, p—A.A.S. '42. Dwarf, compact, very free flowering. Maintains a deep violet purple color. For edgings or rockeries. Pkt. 25c.

NIGELLA (Love-in-a-mist)

MISS JEKYLL, a—Splendid cut variety; bright blue flowers. Free flowering. Pkt. 10c.

PANSIES

Tender perennial. Sow early inside; outside in March; August for spring plants. Prices: Unless noted, Pkt. 25c.

BRONZE GIANTS—Burnished brass to gold, wonderfully tinged with various shades.

GRAND DUKE MICHEL—Largest all-white.

IMPROVED SEA BLUE—Best blue.

MADAM STEELE—Giant velvety purple.

Mlle. IRENE—Henna red type, new to pansies.

PANAMA PACIFIC—Huge deep yellow.

***GILL'S MASTER MIXED**—This fine mixture includes all the giant type pansies.

***SWISS GIANTS**—Wonderful shades. Massive flowers on strong stems.

***MIRACLE GIANTS**—Selected for giant size, long stems and great range of colors.

***GILL'S OREGON GIANTS**—A splendid mixture of giant flowers in a good range of colors. Pkt. 15c.

PENTSTEMON

SENSATION, p—Gloxinia-like flowers on graceful 2' spikes. A wide range of bright colors. Not hardy, and should be covered in winter. Pkt. 10c.

PHACELIA

CAMPANULARIA, a—Suitable for rockeries and edgings. Intense gentian blue with conspicuous white anthers. Pkt. 10c.

PHLOX DRUMMONDI

Beautiful for massing, beds, borders or pots. Sow in open.

RED GLORY, a—A.A.S. '42. Gigantea art shade. Brilliant red with uniform creamy white eye. Pkt. 25c.

NANA COMPACTA, a—Dwarf 6". All colors mixed. An ideal border flower. Pkt. 10c.

MAMMOTH FLOWERING, a—CRIMSON, ROSE, SCARLET and MIXED. Pkt. 10c.



Double Nasturtium, Golden Gleam

PETUNIAS, Annual

GLAMOUR—A.A.S. '42. Luscious salmon rose, delicately veined brown in the creamy, shallow throat. Plants 1½' tall. Pkt. 25c.

RADIANCE—A.A.S. '41. Rich cerise rose with golden yellow throat below the flare. Bears large flowers and blooms very profusely. Pkt. 25c.

CREAM STAR—A.A.S. '40. Dwarf bushy habit with soft creamy white blooms. Pkt. 20c.

GLOW—Dwarf compact, ball shaped variety. Rich rose-red with lighter throat. Pkt. 15c.

HOLLYWOOD STAR—Star shaped blooms of rich rose with amber throat. Pkt. 15c.

SALMON SUPREME—Rich coral-salmon changing to soft salmon pink as they mature. 1 foot high; spreading 1½'. Pkt. 20c.

FLAMING VELVET—Brilliant mahogany-red with velvety sheen; plants are covered with many large flowers all season. Pkt. 15c.

WHITE BEAUTY—Single, fringed, pure white. See Dainty Lady description. Pkt. 25c.

DAINTY LADY—Plants are semi-dwarf and free flowering. Medium sized, delicately fringed light golden yellow flowers. Pkt. 25c.

DEFIANCE LARGEST FLOWERING—Flowers often 5" wide, fringed, with open throats. Desirable colors. Pkt. 25c.

DOUBLE GIANTS—Only a portion come double, but are well worth while. Those plants showing the weakest vitality in starting make the best flowers. Pkt. 35c.

PRIDE OF PORTLAND—Giant single; deep rose. Dainty flowers of uniform color. Pkt. 20c.

ELK'S PRIDE—Immense single; black purple, strong, vigorous grower; very popular. Pkt. 20c.

NANA COMPACTA—This miniature petunia, 5" to 6" high is recommended for borders and rock gardens. ROSE GEM and MIXED. Pkt. 10c.

BALCONY—MIXED. Pkt. 10c.

SILVER BLUE (Heavenly Blue)—Pkt. 10c.

ROSE OF HEAVEN—Brilliant rose. Pkt. 10c.

STAR—Cherry-red, white throat. Pkt. 10c.

ROSY MORN—Rose, white throat. Pkt. 10c.

BLOOD RED—Pkt. 10c.

MIXED—Pkt. 10c.

PHYSALIS (Chinese Lantern)

FRANCHETTI, p—Ornamental plants 2' high, producing orange-scarlet, lantern-shaped fruits which can be cut for winter bouquets. Pkt. 10c.

POPPIES

Sow in fall or early spring.

- BEGONIA-FLOWERED**, a—Resembles a begonia. A lovely double poppy. **MIXED**. Pkt. 10c.
DOUBLE SHIRLEY, a—Beautiful, satiny flowers; finely cut foliage. **PINK** and **MIXED**. Pkt. 10c.

Iceland Poppies

Ideal for border and cut flowers.

- THE EMPEROR**, p—Large, tangerine orange. Pkt. 20c.
THE EMPRESS, p—Large, rich salmon rose. Pkt. 20c.
EXTRA SELECT DOUBLE, p—Resemble double Ranunculus. A fine range of colors. Pkt. 15c.
SINGLE MIXED, p—Splendid mixture. Pkt. 10c.

Oriental Poppies

Produce splendid cut flowers.

- ORIENTAL**, p—Large, orange scarlet, with black blotch on each petal. Pkt. 10c.
PRINCESS VICTORIA LOUISE, p—Large, soft salmon-rose. Pkt. 15c.
***OREGON SUPREME MIXED**, p—From the finest named sorts of our own growing. Pkt. 15c.

PORTULACA (Sun Plant)

For beds, edgings or rockeries.

- SINGLE MIXED**, a—All colors. Pkt. 10c.
DOUBLE MIXED, a—Extra select. Pkt. 10c.

PRIMROSE, Hardy

POLYANTHUS, p—Small, thick round clusters of orange, purple and crimson flowers. Veris Mixed. Pkt. 25c.

JAPONICA, p—Clusters of bright colors. **MIXED**. Pkt. 25c.

AURICULA MIXED, p—A favorite variety; 6" tall. Yellow, brown, red in mixture. Pkt. 15c.

PYRETHRUM

HYBRIDUM MIXED, p—Large, single daisy-like flowers in pink, red and white. Pkt. 15c.
DOUBLE MIXED, p—Pkt. 20c.

RUDBECKIA

HIRTA AUTUMN TINTS, a—Bronze shades, petals stand out, do not droop, grow 3' tall. Pkt. 15c.

SALPIGLOSSIS

Plant in open in May.

DWARF GIANT FLOWERING, a—Averaging 18" to 20" tall; compact branching habit. Flowers larger than the regular strain. **MIXED**. Pkt. 10c.

LARGE FLOWERING, a—2' to 3'. Velvety red, black, scarlet, gold, purple, violet and **MIXED**. Pkt. 10c.

SANVITALIA (Trailing Zinnia)

Golden yellow with dark purple centers. Annual, blooms from June till frost. Pkt. 10c.

SALVIA (Flowering Sage)

Sow indoors in March, plant out in May.

- BONFIRE**, a—Dark green foliage plants of erect globular growth with scarlet-red flowers. Pkt. 25c.
PATENS, a—Intense blue. Pkt. 15c.
SPLENDENS, a—Bright scarlet, 3'. Pkt. 10c.
AZUREA, p—Skyblue. Pkt. 15c.

SCHIZANTHUS

(Butterfly or Fringe Flower)

GIANT FLOWERED HYBRIDS, a—Quick growing, especially good for shade. **MIXED**. Pkt. 10c.

SCABIOSA or MOURNING BRIDE

Sow outside after danger of frost.

- IMPERIAL GIANTS BLUE MOON**, a—Large, double beehive shaped flowers. Deep lavender-blue. 4' tall. Excellent cut flowers. Pkt. 10c.
ROSETTE, a—Extra large flowers, long stiff stems. Deep rose suffused salmon. Pkt. 15c.
AZURE FAIRY, a—Double pale blue. Pkt. 10c.
KING OF THE BLACKS, a—Reddish black. Pkt. 10c.
PEACH BLOSSOM, a—Large, soft pink. Pkt. 10c.
SHASTA, a—Giant, pure white. Pkt. 10c.
GIANT FLOWERED HYBRIDS MIXED, p—Large, ball shaped flowers. Pkt. 10c.
SOUTH AFRICAN, p—Pink and lavender shades. **MIXED**. Pkt. 15c.
CAUCASICA LILAC, p—Hardy, 3'. Pkt. 15c.

SHASTA DAISY

ALASKA, p—The popular evergreen, with single, glistening white flowers, often 5" across. Pkt. 10c.

SNAPDRAGON, Annual

RUST PROOF MAXIMUM TYPE

For early flowers sow in the fall, setting out in the spring; grow the plants in spring in hot beds. Prices: Unless noted. Pkt. 15c.

- ALASKA**—Large pure white.
APPLE BLOSSOM—Light rose-pink white tube.
INDIAN SUMMER—Coppery orange scarlet.
CAMPFIRE—Bright scarlet with yellow tip.
YELLOW GIANT—Canary yellow, white tube.
LOVELINESS—Pure soft rose-pink.
SALMON PINK SHADES—All shades of salmon.
MAXIMUM MIXED—Giant flowers, closely set on tall spikes. Pkt. 10c.

STATICE (Everlasting)

- ANNUAL MIXED**—Easy culture. Pkt. 10c.
PERENNIAL BLUE—12". Pkt. 10c.
PERENNIAL LILAC—30". Pkt. 10c.

STOCKS, Annual

Easily grown from seed.

- GIANT OLD ROSE**—Double, non-branching strain; especially good for florists. Height 2' to 2½'. Pkt. 15c.
IMPROVED LARGE FLOWERING TEN WEEKS—Dwarf, compact, branching, fine for bedding. Height 12". **MIXED**. Pkt. 10c.

DOUBLE EARLY GIANT IMPERIAL

(Imperial Bismark) Height 26"

- BUTTERCUP**—Rich yellow. Pkt. 15c.
ELK'S PRIDE—Royal purple. Pkt. 15c.
GOLDEN ROSE—Light golden rose. Pkt. 15c.
SANTA MARIA—Giant pure white. Pkt. 15c.
GIANT IMPERIAL MIXED—Pkt. 10c.

CUT AND COME AGAIN STOCKS

- (Double Perpetual Branching) Height 20"
BRILLIANT—Blood red. Pkt. 15c.
HEATHEN BEAUTY—Golden rose. Pkt. 15c.
SAPPHIRE—Violet. Pkt. 15c.
GIANT PERPETUAL MIXED—Pkt. 10c.

STOKESIA

CYANEA BLUE, p—Fine cut flower; 2'. Pkt. 10c.

STRAWFLOWER, Annual

Many varieties and colors mixed. Pkt. 10c.

SUNFLOWER

SUN GOLD, a—New. Brilliant golden yellow blooms 4" to 5". Plants 4' to 5' tall, colorful background. Pkt. 10c.

CHRYSANTHEMUM, a—Double, golden yellow; immense blooms on strong, tall stalks. Pkt. 10c.

RED, a—Color varies from yellow to red. Pkt. 10c.
PERENNIAL MIXED—Large, single. Pkt. 10c.

SEMESAN

A highly valuable seed disinfectant, also aiding germination. See page 16.

Symbols: a, Annual; p, Perennial;
bi, Biennial; A.A.S., All-America Selection;
", Inches; ', Feet.

SPENCER SWEET PEAS

Annual

WE OFFER THE LARGEST SELECTION OF SWEET PEAS IN THE NORTHWEST
All Sweet Pea seed treated with ROOTONE.

Their easy culture, freedom of bloom, artistic appearance and delightful fragrance, combined with their splendid cut-flower qualities make them one of the most desirable flowers for the public.

Spring sowings should be made as early in the spring as soil conditions permit. Here in the Coast regions they can often be planted in February. They can also be planted in November and with this method they will bloom very early in the spring; in fact, are usually in bloom Decoration Day.

1942 NOVELTY

SERENADE—Large, waved, clear, medium salmon blooms on strong, vigorous plants. Pkt. 25c.

1941 NOVELTY

QUEEN WILHELMINA—Soft, rose-pink on cream. Flowers large and attractively waved. Pkt. 20c.

GIANT FLOWERING SPENCER

PRICES—Unless noted are uniformly: Pkt. 10c; oz. 30c; ¼ lb. 90c; lb. \$3.00.

- ABUNDANCE** (Multiflora)—Large orchid.
- AVALANCHE**—Giant white.
- BONNY BRIAR**—Large rose pink.
- BOUNTIFUL** (Multiflora)—Rich blue.
- BRIDAL VEIL**—Pure white.
- CAMPFIRE**—Bright sunproof scarlet.
- CHEERI-O**—Begonia rose suffused with gold.
- CHIEFTAIN**—Large, pure, satiny mauve.
- DISCOVERY**—Brilliant chamois pink.
- ECSTASY**—Blush pink.
- FLAMINGO**—Orange, scarlet, cerise. Extra fine.
- GLENEAGLES**—Immense pale blue lavender.
- GRANDEUR**—Shell pink on white ground.
- HAWLMARK PINK**—Giant rose, flushed salmon.
- HEAVENLY BLUE**—Immense delphinium blue.
- HONOUR**—Deep crimson.
- IDYL**—Giant flowers in fours; salmon pink.
- LADY MACBETH**—Dazzling red.
- LIFE**—Scarlet cerise. Does not fade.
- MARY PICKFORD**—Cream pink suffused salmon.
- MASTERCREAM**—Large black seeded cream.
- MELODY**—Golden salmon-pink on cream.
- MISS CALIFORNIA**—Giant salmon pink.
- POWERSCOURT**—Mammoth, pure lavender.
- PROLIFIC** (Multiflora)—Warm rose-pink.
- QUINTUPLETS** (Multiflora)—American Beauty rose.
- RED SUPREME**—Bright red.
- SUNKIST**—Giant cream; picotee edge of rose.
- SWEET AFTON**—Deep silvery pink.
- THE SULTAN**—Large, black, velvety maroon.
- WELCOME**—Brilliant scarlet. Extra fine.

GIANT RUFFLED SPENCER

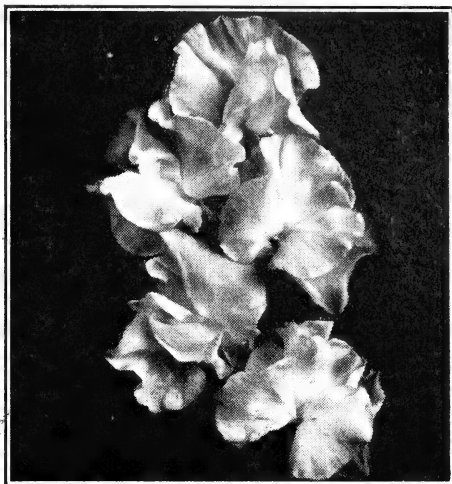
Flowers are duplexed, heavily ruffled and frilled.

- PRICES—Unless noted are uniformly: Pkt. 10c; ½ oz. 20c; oz. 35c; ¼ lb. \$1.00.
- RUFFLED BLUE**—Large clear blue.
- RUFFLED BONNIE RUFFLES**—Salmon pink on cream.
- RUFFLED CARMINE**—Carmine rose.
- RUFFLED CRIMSON**—Rich crimson.
- RUFFLED EXQUISITE**—Salmon-cerise with four large flowers on long strong stems.
- RUFFLED GLAMOUR GIRL**—Light fawn pink.
- RUFFLED ORCHID**—Soft orchid shade.
- RUFFLED PINK**—Deep rose-pink on cream becoming lighter toward the base.
- RUFFLED PRIMROSE**—Rich cream.
- RUFFLED PURPLE**—Rich purple.
- RUFFLED ROYAL RUFFLES**—Scarlet-cerise.
- RUFFLED MIXED**—This mixture contains the above named varieties and many others.

SPRING FLOWERING SPENCER

Extremely hardy, productive, and more heat resistant than other Sweet Peas. Blooms a few days before the standard varieties.

- BLUE**—New. Clear, marine blue. Pkt. 20c.
- LAVERENDER**—New. Clear, soft lavender. Pkt. 20c.
- ROSE PINK**—New. Clear shade. Pkt. 20c.
- WHITE**—New. Black seeded. Pkt. 20c.



Early Flowering, Miss Liberty

EARLY FLOWERING SPENCER

These bloom two weeks ahead of the regular Spencer. Valuable for greenhouse forcing.

- PRICES—Unless noted are uniformly: Pkt. 10c; ½ oz. 25c; oz. 45c; ¼ lb. \$1.25.
- COQUETTE**—New. Coral pink, duplexed flowers. Pkt. 25c.
- FIESTA**—New. Large flowers of strong self, sunproof orange. Pkt. 25c.
- MISS LIBERTY**—New. Flashing rose-carmine with white keel. Pkt. 25c.
- HELEN HAYES**—New. Bright coral, with orange suffusion. Pkt. 20c.
- BOON**—Deep salmon pink.
- DAPHNE**—Soft salmon-pink on cream ground.
- DELICIOUS**—Crushed strawberry.
- FLORIST BLUE**—Clear blue.
- FRAGRANCE**—Clear lavender self.
- GARDENIA**—Dense paper white.
- PEARL BUCK**—Warm rose faintly suffused orange.
- ORIENTAL**—Large rich cream.
- ROSE PICOTEE**—Pure white with salmon rose edge.
- SEQUOIA**—Rich golden cerise.
- SHIRLEY TEMPLE**—Beautiful soft rose pink.
- SUSANNA**—Deep crimson.
- TITANIA**—Mammoth deep rose.
- TOP HAT**—Large blooms of navy blue.
- TREASURE ISLAND**—Sparkling golden orange.
- EARLY SUPER MIXED**—A very fine mixture. Pkt. 10c; ½ oz. 25c; oz. 40c; ¼ lb. \$1.00; lb. \$3.25.

MIXED SWEET PEAS

*SHOW GROUND MIXTURE—A remarkable mixture saved from trial grounds, being made up from a long list of new and standard named Spencer varieties. Pkt. 10c; oz. 30c; ¼ lb. 90c; lb. \$3.00.

GILL'S PROGRESSIVE MIXTURE—This Spencer mixture contains a splendid assortment of colors both light and heavy shades, and gives fine satisfaction. Pkt. 10c; oz. 20c; ¼ lb. 65c; lb. \$2.00.

CUPID (Dwarf)—Useful for borders and edging. Pkt. 10c; oz. 35c.

SWEET ROCKET

MATRONALIS MIXED, p—3' tall, fragrant spikes of blooms in May for cutting. Pkt. 10c.

SWEET WILLIAM, Biennial

NEWPORT PINK—Salmon rose. Pkt. 10c.
SCARLET BEAUTY—Large clusters of deep scarlet. Very popular. Pkt. 10c.
JOHNSON'S DIADEM—Giant blooms in immense clusters; deep crimson with white eye. Pkt. 10c.
NEW MAMMOTH MIXED—Gigantic strain. Single flowers in a great range of color. Pkt. 10c.
DOUBLE MIXED—Extra select strain. Pkt. 15c.

THALICTRUM (Meadow Rue)

DIPTEROCARPUM, p—Lilac-mauve with conspicuous yellow anthers. 4' tall. Pkt. 10c.

THUNBERGIA, BLACK EYED SUSAN

FINEST MIXED, a—Rapid climber, preferring a warm place; useful for hanging baskets, vases, fences. Buff, white, and orange, with dark eyes; 5'. Pkt. 10c; ½ oz. 50c.

TIGRIDIA

MIXED, p—(Mexican Shell Flower)—Large triangular shaped flowers of bright colors. Pkt. 20c.

TITHONIA (Mexican Sunflower)

SPECIOSA, a—Single, orange, 6' tall. Pkt. 10c.

TRITOMA (Red Hot Poker)

PFITZER'S HYBRIDS, p—Easily grown, 4' to 5' tall. Brilliant red. Pkt. 15c.

TUNICA

SAXIFRAGA, p—A pretty tufted plant with light rose flowers. Use for rockeries or borders. Pkt. 10c.

VENIDIUM

FASTUOSUM HYBRIDS, a—Daisy-like flowers, shades from white to salmon. 2' to 3' tall; likes sun. **MIXED**. Pkt. 15c.

VINCA

MIXED, a—Ornamental free flowering plants; fine for bedding. Sow outdoors in May. Pkt. 10c.

VIRGINIA STOCK

DWARF MIXED, a—Small red, rose, and white blooms. Plants 6" to 8" tall, excellent borders. Pkt. 10c.

ZINNIAS

These old-fashioned flowers have been highly improved and the new giant sorts are popular. Blooms 5" to 6" across are very common. Best results are obtained by planting where you wish them to grow. This is far better than transplanting, except for early blooms. Plant outdoors May 1 to June 15.

BLACK RUBY—A.A.S. '41. Lilliput type. Rich blackish maroon, petals are of a velvety texture. Pkt. 25c.

HOWARD'S GIANT CRESTED MIXED—New. Large flower. Excellent for cutting. Pkt. 25c.

SCABIOUS FLOWERED MIXED—Medium-sized blooms, resembling the Scabiosa. Pkt. 10c.

QUILLED TYPE MIXED—Giant type with long rolled or quilled petals. Pkt. 10c; ½ oz. 30c.

BEDDING ZINNIAS

GALLARDIA FLOWERED MIXED (Navajo)—Mostly two toned with a ring of deeper color in center. Pkt. 10c.

HAAGEANA DOUBLE HYBRIDS—Small Mexican type. Attractive color mixture. Pkt. 10c.

EARLY WONDER MIXED—Dwarf. Masses of Pumila type flowers on long, nearly leafless stems. Pkt. 10c.

LINEARIS—Dwarf. Single, orange flowers with yellow stripe and dark center. Pkt. 10c.

LILLIPUT TOM THUMB—This mixture is the most dwarf Zinnia known. Fine for borders. Pkt. 10c.

LILLIPUT DOUBLE—Miniature flowers about the size of a daisy; excellent for borders. Canary Yellow, Crimson Gem, Golden Gem, Lilac Gem, Rosebud, Salmon Rose, White Gem and Mixed. Pkt. 10c; ½ oz. 35c; oz. \$1.00.

VERBENAS, Annual

Giant Hybrida Strain—PRICES: Unless noted, Pkt. 10c.

BRIGHTNESS—Rosy cerise scarlet; white eye.
LAVENDER GLORY—Lavender, cream eye.
LUCIFER—Brilliant scarlet self.
LUMINOSA—Flame pink, shading to salmon.
ROSE CARDINAL—Rose, large white eye.
ROYAL BLUE—With creamy yellow eye.
WHITE—Pure white.
MAMMOTH STRAIN MIXTURE—An excellent mix.
NANA ERECTA MIXED—New Dwarf type, covered with flowers. Pkt. 15c.

VIOLA CORNUTA (Tufted Pansies)

ARKWRIGHT RUBY, p—Dark crimson scarlet. Pkt. 15c.
JERSEY GEM, p—Violet blue. Pkt. 25c.
LUTEA SPLENDENS, p—Chrome-yellow. Pkt. 10c.
CHANTREYLAND, p—Best pure apricot. Pkt. 15c.
TUFTED PANSIES MIXED, p—Pkt. 10c.

VISCARIA

BRILLIANT MIXED, a—Small single flowers of red, white and blue shades. Attractive borders, blooming all summer. Pkt. 10c.

WALLFLOWER

Half hardy, bloom early in spring. Easily grown.
MAMMOTH DOUBLE MIXED, p—Giant flowers. A large percentage come double. Pkt. 15c.
PERENNIAL SINGLE MIXED—Pkt. 10c.
DOUBLE EARLY WONDER MIXED, a—Blooms in 90 days. Pkt. 10c.
SINGLE ANNUAL MIXED—Pkt. 10c.
SIBERIAN, bi—12" high with bright orange flowers. Pkt. 10c.

WILD FLOWER GARDEN

A mixture of many annual flower seeds which give splendid results on banks and roadsides. Large Pkt. 10c; oz. 35c; ½ lb. \$1.00.

FLOWER SEEDS FOR FLORISTS

We supply hundreds of florists with bulk weights in flower seeds. Please write.



Zinnia, Fantasy Wildfire

Gill's Cactus and Semi-Cactus Dahlias

EXPLANATION—S. C. indicates Semi-Cactus; these have broader and more massive petals. Varieties indicated with a star are Pacific Northwest introductions. We can supply many other sorts. If interested, please write. Those marked (Gill) were introduced by Gill Bros.

AMBASSADOR, S. C.—Giant, soft bright yellow, deepening to orange center; strong, erect stems.....	.35
AMERICAN TRIUMPH—Large red true cactus.....	.35
ANDREAS HOFER—Beautiful pink, on good stems.....	.35
*AUNT PITY PAT, S. C.—Yellow, shading to pink.....	.50
BALLET GIRL—Immense, incurved flowers on good stems. Orange petals tipped white.....	.35
*BONNEVILLE, S. C. (Gill)—Very large blooms of ivory white with yellow shadings. Excellent stems.....	.75
*BURNT ORANGE, S. C.—An improved U. S. A.....	.35
*CAMPFIRE GLOW (Gill)—Large blooms, fully double on erect stems. Bright crimson self.....	.35
CHEMAR'S MASTERPIECE, S. C.—Giant flowers on good stems; rich orchid pink.....	.35
CIGARETTE, S. C.—Giant on strong stems; cream ground edged with pomegranate red.....	.50
*COLUMBINE (Gill)—Soft columbine shades of lavender, rose and yellow. Long, erect stems.....	.35
CONQUISTADOR, S. C.—Giant, massive flower. Creamy yellow shading to pink at base.....	.75
*CROWN POINT (Gill)—Giant lavender blooms. Tall, vigorous plants.....	.50
DR. CURTIS HOLCOMBE, S. C.—Clear lemon yellow with apricot tints on outer petals.....	.75
*DR. RICHARD BURKE, S. C.—Orange, with good stems.....	.50
DR. J. SCHEINER, S. C.—Large smoky lavender. Excellent stems.....	.50
EASTLAND SUNBEAM, S. C.—Deep cinnamon red.....	.35
EDITH WHITAKER, S. C.—Rich dark velvety crimson with maroon shadings.....	.50
EDNA FERBER, S. C.—Coral shading to gold, glistens with golden sheen.....	.50
ELITE GEM, S. C.—Lemon on chrome, suffused and shaded tyrian rose, with rose reverse.....	.35
*ENCHANTING, S. C. (Gill)—Giant flowers of rich rosy salmon with large golden centers.....	.35
FAITH NEWMAN—Incurved yellow with white reverse.....	.35
*FASCINATION, S. C. (Gill)—Giant flowers on long stems; deep purple, regularly tipped white.....	.50
GOLDEN STANDARD—Golden tan, blushed with tints of amber and bronze.....	.50
GOLDEN WEST, S. C.—Large flower on erect stems; deep rich yellow overlaid with orange.....	.35
GOOD WILL, S. C.—Beautiful pink with a blending of cream and yellow at center.....	.35
JEAN CHAZOT, S. C.—Giant flowers on long stems; golden bronze lightly suffused with soft red.....	.35
JEAN TRIMBEE, S. C.—Giant flowers of rich purple, extra fine stems.....	.50
JERSEY DAINTY—Pure white lightly tinged with lavender. Free blooming.....	.50
JOSEPHINE G., S. C.—True rose pink, with some petals tipped gold. Excellent cut flower.....	.35
KATHLEEN V. SMITH—Lovely pure pink with lighter center.....	.50
*LILLIAN SHERIDAN, S. C.—Orange shaded aurora yellow; petals tipped with gold. Erect stems.....	.35
*MELONEY—Pure white cactus of fine form. Long stems.....	.50
MARIAN BROOMALL, S. C.—Very large lavender pink with pure white center.....	.50
MARYLAND ORANGE, S. C.—Orange and red flowers with orange predominating.....	.35
MISS ELSIE JANE, S. C.—Shrimp pink with cream shadings at center and tipped violet rose.....	.50
MISS TOLMIE—Large, pure mauve. Perfect stems.....	.35
MRS. ELLA WORTHEN, S. C.—Extra large salmon pink.....	.50
MRS. ETHEL SMITH, S. C.—Giant creamy white shading to lemon. Long, erect stems.....	.35
NANKING YELLOW, S. C.—Light creamy yellow. Free blooming.....	.50
NEW GLORY, S. C.—Large, garnet red, each petal tipped white.....	.50
*OREGON (Gill)—Large flower of distinct color. Brilliant rose carmine cerise. Fine cut flower.....	.35
ORIENTAL BEAUTY—Blooms are large, clear bright rose pink. Perfect stems.....	.50
PALO ALTO, S. C.—Clear, rich salmon, shading to gold at center.....	.50
PURPLE GLORY—Striking flowers of light purple, penciled with black.....	.50
ROMANY—Large flowers of bright geranium scarlet; long rolled petals.....	.35
RONDO—Very large, light lemon yellow. Splendid stems.....	.35
ROGUE BOQUET—Blended shades of orange-red with tints of purple. Good stems.....	.50
ROYAL VELVET, S. C.—Large deep red, good stems.....	.50
SATAN, S. C.—Large blooms of flaming red with a touch of gold at base.....	.50
SCHWERIN'S WAHL, S. C.—Sulphur yellow, reverse red.....	.35
*T. P. CRAMER (Gill)—Rich coral rose with a touch of yellow at base of petals.....	.50
*WAVE CREST, S. C. (Gill)—Giant blooms with sulphur yellow base. Petals heavily suffused and plicated with pink.....	.50

Gill's Star Dahlias

*AUTUMN STAR (Gill)—Bright autumn shades of gold and bronze; petals shading lighter at tips.....	.25
*BABY BUTTERCUP (Gill)—Small sulphur yellow flowers, popular for florist trade. It averages about one inch in diameter. Something new and distinct in dahlias.....	.35
*GARNET STAR (Gill)—Deep garnet red. A splendid cut flower.....	.35
*GILL'S CERISE STAR (Gill)—Long, erect stems. Ideal for cutting.....	.25
*SYLVIA STAR (Gill)—Soft silvery pink. Cactus petals. Long, erect stems.....	.35
WHITE STAR—White with orange pollen center. Long, erect stems. Ideal for cutting.....	.35

Gill's Peony Flowered Dahlias

BLOSSOM—Ivory white on long, erect stems. Fine cut flower.....	.35
*CITY OF PORTLAND (Gill)—Giant canary yellow on long, erect stems. One of the finest.....	.35
*DR. GEORGE SKINNER—Large flowers on fine stems; deep red heavily tipped white.....	.35
*MRS. IRENE TAFF (Gill)—Rich wine red, toned yellow deepening to golden zone at center.....	.35
*MRS. JULIUS MEIER (Gill)—Centers deep yellow with major part of the petals rich deep salmon.....	.35
*SUPREME (Gill)—Giant blooms on long, erect stems. Clear lavender pink.....	.35
THE ORIOLE—A giant; a striking combination of burnt orange, red and yellow, often tipped white.....	.35

Gill's Decorative Dahlias

Abbreviations—F. D., Formal Decorative. I. D., Informal Decorative.

AIR MAIL, I. D.—Light lavender blooms, held erect on long, stiff stems.....	.50
AL KORAN, F. D.—Giant, goldenrod yellow suffused amber on older petals. Long, erect stems.....	.35
AMUN RA, F. D.—Gigantic flowers on long stems; copper and orange with gold and reddish bronze.....	.35
ANDREA ERICKSON, I. D.—Pure white of immense size, and beautiful formation.....	.50
ANGELO ROSSI, I. D.—A shading of grenadine over soft orange. Large flowers, long, strong stems.....	.75
ANNA BENEDICT, I. D.—A dark rich velvety carmine, almost black center.....	.50
ARCTURUS, F. D.—Large scarlet red suffused deep yellow, with yellow reverse.....	.50
AVONELLA, F. D.—Amaranth purple. Large flowers.....	.35
AZTEC GLORY, I. D.—An immense, shaggy, pure golden yellow. Dwarf grower.....	.50
BALLEGO'S GLORY, F. D.—Holland dahlia. Rich maroon, edged with gold.....	.75
BLUE RIVER, F. D.—As near blue as you will find in a dahlia. Good stems and a prolific bloomer.....	.50
BOB BARKER, F. D.—Bright rose pink, with gold base. Long, erect stems.....	.35
*BRILLIANT, F. D. (Gill)—Intense fiery scarlet on long, erect stems. A fine cut flower.....	.25
BUCKEYE BRIDE, F. D.—Geranium pink, very delicate shade, excellent cut flower.....	.50
CALIFORNIA IDOL, I. D.—Clear, glistening yellow. Immense size.....	.50
CALIFORNIA ROSE, I. D.—Deep rose pink, centers high and full. An honor roll dahlia.....	.50
CAPRICE, I. D.—Golden yellow. A gold medal winner.....	.50
CARMEN, F. D.—Extra large, good, salmon-pink.....	.50
CHAMPOEG, F. D.—Waxy canary yellow at the center, shading to bright peach red toward the outer edges of the petals. Stems are very stiff.....	.50
CHAS. G. REED, F. D.—Rich reddish purple. Free blooming.....	.50
CLARA CARDER, F. D.—A New Zealand dahlia. Large, cyclamen pink.....	.50
CONGRESSMAN WOLVERTON, I. D.—Bright salmon pink, fine stems.....	.35
CORNELIA B. PINCHOT, I. D.—Glowing, burgundy red.....	.50
DAD, I. D.—Large, brilliant red flowers, with good stems.....	.35
DAILY MAIL, I. D.—Large, deep yellow, blending to golden orange. Excellent stems.....	.50
DIXIE RAVENSCROFT, I. D.—Bright flame color with gold reverse.....	.35
DWIGHT W. MORROW, F. D.—Large deep red; one of the best.....	.50
EAGLE ROCK BEAUTY, I. D.—Pink with cream center. A very good flower and very popular.....	.35
EARL WILLIAMS, F. D.—Immense scarlet, tipped white. Strong, erect stems.....	.50
ELINOR M. RADELL, I. D.—Beautiful violet rose, darker reverse with gold at base of petals.....	.50
FOREST FIRE, I. D.—Brilliant flame, with gold shadings. Very striking.....	.50
FORT MONMOUTH, I. D.—Large, rich crimson maroon shaded to bluish violet at tips of petals.....	.50
FRANK MILLER, F. D.—Pieric yellow growing to a large size on long, straight stems.....	.35
FRANK SERPA, I. D.—Pale pink, shaded rose at edges of petals. Long stems.....	.75
FREDA GEORGE, I. D.—Cream pink, overlaid with heliotrope.....	.75
GALLI CURCI, I. D.—Large, salmon-orange. Good stems.....	.35
GIRL OF HILLCREST, F. D.—Bright, mikado orange. One of the best of its color. Strong grower.....	.50
GRACE CURLING, I. D.—Lilac with a pink tint, shading to white at base.....	.35
HARRIET THOMPSON, I. D.—Orange buff and bronze, with reverse Oriental red.....	.35
H. C. DRESSELHUYTS, F. D.—Soft pink with lighter shading. Good cut flower.....	.35
HERA, F. D.—Orchid lilac on splendid stems.....	.35
HORACE ADAMS, I. D.—Large shaggy blooms of orange suffused with yellow.....	.50
HUBERT ROY STOVEL, I. D.—Immense, rich, golden yellow; long wavy petals.....	.35
*IMPROVED CLOWN, F. D. (Gill)—Creamy yellow ground splashed and striped with crimson.....	.50
*INDIAN SUMMER, F. D. (Gill)—Soft salmon with gold suffusion and silvery sheen; long stems.....	.50
JANE COWL, I. D.—Giant, bronzy buff and old gold, blending deeper to a perfect center.....	.35
JANE ROSS, I. D.—Purplish crimson shaded with purple, having a velvety maroon sheen.....	.35
JERSEY BEACON, F. D.—Gigantic blooms on strong stems; Chinese scarlet with lighter reverse.....	.35
JERSEY BEAUTY, F. D.—A giant on long, erect stems; beautiful shade called eosine pink.....	.35
J. K. ALEXANDER, JR., I. D.—Immense crimson red, yellow fleck in center. Free flowering.....	.50
KING OF THE GARDEN, I. D.—Large, bright canary yellow flushed with soft orange red. Good stems.....	1.00
LA DOSKA DOWD, F. D.—Large blooms on good stems; clear yellow.....	.35
LA ESTRELLA, F. D.—Deep burnt orange. Long, erect stems.....	.35
LAVENDER BRIDE, F. D.—Large lavender with bluish sheen. One of the best lavender.....	.50
LORELI, F. D.—Pure rose pink, on long strong stems. Free flowering.....	.50
*MARCELLA GILL, F. D. (Gill)—Extra early, and the best cut flower dahlia we have seen. Long, wiry, erect stems with delightful shell pink flowers. Dozen \$2.00.....	.25
MARGRACE, I. D.—Bright cardinal with tan reverse. Excellent stems.....	.50
MARJORIE BEEVOR, I. D.—Beautiful orchid flower, with excellent stems.....	.35
MARJORIE COLE, I. D.—Good bi-color; orange-yellow, tipped white. Free blooming.....	.35
*MARMION, I. D.—Gigantic full flowers on good stems; golden yellow tinted bronze.....	.35
MARSHALL'S PINK, F. D.—Beautiful shrimp pink. Jersey Beauty form. Fine for cutting.....	.35
MARY ELLEN, F. D.—Violet rose, with considerably more pink than lavender.....	.35
MARYLAND GLORY, F. D.—A large deep American Beauty pink red; strong erect stems.....	.50
MARYLAND JUBILEE, F. D.—Glorious rich rose red.....	.50
META SCAMMELL, F. D.—Center pale amaranth pink shading to deeper pink at tips; long stems.....	.35
MISSION BELLE, F. D.—Immense blooms of old rose and pale lavender. Long, erect stems.....	.35

For collections of dahlias, selected especially for cutting, yard decorations, or according to type, refer to the inside back cover of this catalog. Special prices on these collections offer real savings. All collections postpaid.

	Each
*MISS PORTLAND, F. D. (Gill)—Beautiful, large watermelon pink flowers on excellent stems.....	.50
MONMOUTH CHAMPION, F. D.—Immense bright orange-scarlet blooms. Flowers very freely.....	.35
MONMOUTH GIANT, I. D.—Clear sparkling orchid, up to 12 inches in size.....	.50
*MONTANA BEAUTY, I. D. (Gill)—Petals yellow, suffused with violet and rose, giving a tan effect.....	.50
MR. CROWLEY, F. D.—Exquisite salmon pink. Distinct colored flowers on good stems.....	.35
MRS. ALFRED B. SEAL, I. D.—Very large, pure glowing rose. Good stems.....	.35
MRS. CARL SALBACH, F. D.—Extra long, strong stems carry giant flowers of mauve pink.....	.35
MRS. EDNA B. CHAMPLIN, F. D.—Deep rhodamine pink, very large.....	.50
MRS. GEO. LE BOUTILLIER, I. D.—Rich velvety carmine. Immense blooms, strong stems.....	.50
MRS. GEO. SKEEN, F. D.—One of the best rose colored dahlias. Blooms are large on perfect stems.....	.35
MRS. J. K. ALEXANDER, F. D.—Large, clear buttercup-yellow.....	.50
MRS. I. DE VER WARNER, F. D.—Large flowers on long, stiff stems; deep mauve pink or orchid color.....	.35
MRS. WARREN DEE MILLAR, F. D.—Giant white flowers, shading to flesh pink, on good stems.....	.35
MYRA HOWARD, I. D.—Glowing combination of saffron, yellow and tints of salmon in center.....	.35
NAGEL'S TRIUMPH, I. D.—Brilliant carmine rose with golden yellow base. Good cut flower.....	.50
NANCY ROBINSON, I. D.—Exquisite true pink blooms of unique form. Excellent cut flower.....	.50
OAKLEIGH MONARCH, I. D.—Deep, cerise red.....	.50
*OREGON SUNSHINE, F. D.—Giant, rich golden yellow. Long, erect stems.....	.35
PATRICIA WEYMAN, F. D.—White with a soft lavender veining in each petal.....	.50
*PEACH GLOW, F. D. (Gill)—Large flowers on long, erect stems. Beautiful watermelon pink.....	.35
PRES. FRANKLIN D. ROOSEVELT, F. D.—Chinese red with cream reverse.....	.50
PRIDE OF CALIFORNIA, F. D.—Giant on long, strong stems; color, deep rich crimson.....	.35
PRIDE OF SAN FRANCISCO, F. D.—Giant blooms on stout stems; brilliant, golden salmon pink.....	.50
RADIO, I. D.—Giant flowers on erect stems. Blood red edged and tipped with gold.....	.50
RIPPLES, I. D.—Large flower of rose pink, held on very long stems.....	.35
RORY O'MOORE, F. D.—Deep maroon with petals tipped white. Stiff stems.....	.35
*SAFRANO, F. D. (Gill)—Yellow at base, heavily overlaid with scarlet. Reverse saffron yellow.....	.50
SALBACH'S WHITE, F. D.—Pure white. Good cut flower.....	.35
SALLY B, F. D.—Large, pure, bright pink. Stems strong and erect.....	.50
*SEASIDE BEAUTY, F. D. (Gill)—Giant blooms of rich, ruby red; tips of outside petals turning to dove color as flowers age. Ideal cut flower.....	.50
SHAHARAZAD, I. D.—Large blooms of deep rose pink, with erect stems.....	.50
SONNY BOY, I. D.—Large, old rose slightly striped and tinged old gold.....	.35
*SPARKLES, F. D. (Gill)—Large blooms of deep bright scarlet with petals evenly and distinctly tipped white. Fine stems and an excellent cut flower.....	.75
SPOTLIGHT, I. D.—Large, clear sulphur yellow. Petals curl and twist in a fascinating manner.....	.50
*SUMMER GIRL, F. D. (Gill)—Large blooms of light lemon yellow. Stiff stems; dwarf plants.....	.35
SUPREME MONARCH, I. D.—Very large, deep brilliant red, reverse pearly white.....	.35
THE COMMODORE, I. D.—One of the largest and most spectacular of the yellows.....	.50
THE FIREMAN, I. D.—Spectrum-red with occasional stripes and tips of mustard yellow.....	.50
THOS. A. EDISON, F. D.—Royal purple. Flowers are carried on excellent stems.....	.50
TOMMY ATKINS, I. D.—A giant flower of lustrous flaming scarlet on long, erect stems.....	.35
UNCLE TOM, F. D.—Giant flower of dark velvety garnet heavily toned black. Good, erect stems.....	.35
VALENTINO, F. D.—Beautiful salmon pink, shading to cream at center. One of the best.....	.35
WALDHEIM SUNSHINE, I. D.—Giant blooms of deep yellow. Long, wavy petals; erect stems.....	.35
WASHINGTON GIANT, I. D.—Orchid pink and lavender with a blend of white at center. Good stems.....	.50
WENOKA, F. D.—Massive, rosy mauve with magenta shadings.....	.50
WHITE KNIGHT, F. D.—Pure, snow white of large exhibition size. Free blooming.....	.50
WHITE WONDER, I. D.—Large pure white. Lovely form, wavy petals, splendid stems.....	.50

Gill's Single Dahlias

*AFTERGLOW (Gill)—Soft yellow ground suffused and tipped with salmon pink. Good stems.....	.35
AMI BARILLET—Purplish black foliage; small, rich, garnet flowers on good stems.....	.25
*BRIGHTNESS (Gill)—Giant golden yellow tipped and toned with crimson; long, erect stems.....	.25
CLIFTON—Medium flowers of rich purple with red halo around the golden pollen center.....	.25
*FIERY GEM (Gill)—A mass of brilliant fiery scarlet blooms of medium size. Splendid for bedding.....	.35
FUJI SAN—Golden bronze with crimson ring at center.....	.35
NAOMI—Violet red, white tips.....	.35
*PURPLE QUEEN (Gill)—Rich purple. Good stems for cutting.....	.35
QUEEN OF SINGLES—Beautiful pure white with rounded petals. Fine cut flowers.....	.25
*RED DOGWOOD (Gill)—Slightly curved petals of blood red with darker pollen centers.....	.35
RED GIANT—Largest bright scarlet.....	.25
RED INDIAN—Deep bronze; dark plum foliage.....	.35
*ROSE BEAUTY (Gill)—Large rounded petals of deep rose; long, erect stems.....	.25
SALOME—Large, bright yellow. Fine cut flowers.....	.35
TIPS OF SILVER—Maroon with each petal tipped silvery white.....	.35

"ORTHO" ROSE SPRAY KIT

Keep your roses free of insects and disease. Kit consists of 2 oz. bottle Extrax and 2 oz. bottle Greenol. Price, not prepaid: Per kit, \$1.00.



"ORTHO" BUG-GETA BAIT

For control of slugs, snails, earwigs, sowbugs and cutworms. Prices, not prepaid: Lb. carton, 25c; 2½ lb. carton 50c.



Gill's Pompon Dahlias

AIMEE—Tiny bronze flowers on long, erect stems. One of the best.....	.25
*ALL BRIGHT (Gill)—Deep gold heavily tipped and toned red. Ideal cut flower.....	.25
ARTHUR KERLEY—Rich dark red. One of the best.....	.25
ATOM—Small, perfect, orange flower. Good stems.....	.25
BANTAM—Bright scarlet. Fine stems.....	.25
BOBBY—Deep plum color; very perfect; good stems.....	.25
DEE DEE—Small lilac, lavender. Good stems.....	.25
EDITH MUELLER—Beautiful rose red blended with rich yellow.....	.25
*FLORIST GEM (Gill)—Deep golden yellow, tipped and suffused with orange red. 1½ inches.....	.25
GERTRUDE—Crimson red.....	.35
GIRLIE—Neat small flowers, on long, erect stems; pretty rosy lavender.....	.25
*GOLD DROP (Gill)—Pure gold color; 1½ inches; long, erect stems. Ideal cut sort.....	.25
GRUS AM WEIN—Crushed strawberry color. Perfect, small flowers on long, erect stems.....	.25
HARRY SNOOKS—Rose pink with white center. Small, neat flowers on ideal stems.....	.25
HELEN ANITA—Lavender pink with distinct white center.....	.25
HONEY—Pale yellow, suffused red on edge.....	.25
JOE FETTE—The outstanding pure white pompon. Small, perfect blooms on long, erect stems.....	.25
LITTLE JIM—A neat flower of deep garnet. Long, erect stems. One of the best.....	.25
LLOYD HICKMAN—A neat, small flower of old rose. Long, erect stems.....	.25
MARY MUNN—Dark orchid. Ideal cut flower.....	.25
MICKEY—Straw color, daintily tipped lavender.....	.25
MIKE—Small perfect flowers of scarlet orange. Long, erect stems.....	.25
*PATTY (Gill)—Yellow base; tips heavily suffused crimson.....	.25
PEGGY ANN—Yellow, shaded red at tips.....	.25
ROSA WILMOTH—A fine rose pink on ideal stems; free flowering.....	.25
SAN TOY—White, very heavily tipped carmine. Splendid little flower on long, erect stems.....	.25
SILVERTIPS—Small purple, center and reverse silver gray.....	.25
TIP TOP—Rich crimson.....	.25
TOMMY KEITH—Small flowers of crimson tipped white. Very attractive.....	.25
VIVID—Rich bright scarlet. A perfect flower well suited for cutting.....	.25
YELLOW GEM—Pure yellow. Small, perfect flowers.....	.25

Gill's Miniature Dahlias

(Very small flowers in same classes as the large dahlias.)

BABY LEROY, F. D.—A small bloom of bright scarlet produced very freely.....	.35
BABY ROYAL, S. C.—Salmon pink with gold shadings.....	.35
BEATRICE VON VALKENBERG, F. D.—A small orchid flower.....	.35
BISHOP OF LLANDAFF (Duplex)—Rich deep red with dark center.....	.35
*CERISE BEAUTY, F. D. (Gill)—Compact, neat, cerise flowers on good stems.....	.35
CORONNE, F. D.—Beautiful pure white resembling a gardenia.....	.50
DREAMTHORPE, I. D.—Deep tawny gold or bronze, especially fine for cutting.....	.35
ELIZABETH PAPE, C.—Rosy salmon-pink. Lighter tips.....	.35
GOOD LUCK (Gut Gluck) I. D.—Bright violet petals tipped white.....	.35
LITTLE JEWEL, F. D.—Peach blossom pink on perfect stems.....	.35
MARQUITA, F. D.—Light pink; blooms profusely.....	.25
PETER, C.—Yellow, suffused and tipped red.....	.35
POPPY, F. D.—Terra cotta red, shading to deep coral.....	.35
ROSE GEM, F. D.—Rose pink, tinged lavender as the flowers age.....	.35
RHODA, I. D.—Glowing orange rose; curling petals, fine cut flower.....	.25
SLAVKA DOKOUPILOVA, I. D.—Rich, warm buff. Each petal tipped with white.....	.35
SNOW DRIFT, C.—Pure white, perfect form. Very small.....	.50

Gill's Ball or Show Type Dahlias

A. D. LIVONI—This old favorite is still one of the best; color, clear, rich pink; fine stems.....	.25
AMERICAN BEAUTY—Large blooms of gorgeous wine crimson; splendid sort.....	.25
ANNA REHORST—Deep purple or maroon shade; good stems.....	.35
BIG BEN—One of the largest and best show dahlias. Rich raspberry red.....	.35
BONNIE BLUE—Dark lavender blue. Perfect stems.....	.35
CLARA CLEMENS—Large, deep, rich red, tipped white. Excellent cut flower.....	.50
GOLDEN OPPORTUNITY—Giant flowers on strong, erect stems; deep golden yellow.....	.35
MAUDE ADAMS—Perfect flowers; white overlaid clear delicate pink. Long, erect stems.....	.25
*MOLALLA (Gill)—Fine yellow, tipped white. Long, erect stems; extra fine.....	.25
*NETARTS (Gill)—White variegated with crimson; long, erect stems. One of the best variegated.....	.35
NORMA—Large flowers on good stems; bright orange buff; fine cut flowers.....	.25
RED GOLD MEDAL—Brilliant orange scarlet; a sport from Gold Medal. Long, erect stems.....	.35
ROSEBUD—White, effectively edged with rose pink; long, erect stems; extra good.....	.25
SUPT. AMRKIN—Large, bright rose-pink; splendid stems and a fine cut flower.....	.35
*WHITE LIVONI (Gill)—Pure white counterpart of A. D. Livoni. Long, erect stems.....	.25
W. W. RAWSON—Large quilled flowers; white overlaid with lavender blush; long, erect stems.....	.35

"ORTHO" GARDEN VOLCK SPRAY

A complete Nicotine emulsion spray. Price, not prepaid: 4 oz. bottle, 35c; 16 oz. bottle, 85c.

TRANSPLANTONE

Hormone Powder. Stimulates the roots of plants, shrubs, trees. Postpaid. ½ oz. Pkt. 25c; 3 oz. can, \$1.00.

Gill's Select Gladiolus

Gladiolus bulbs should be planted 4 inches deep in good rich soil well prepared. Planting time will depend upon your choice. March 1 to June 1 will usually permit full bloom.

PRICES GIVEN ARE POSTPAID—6 at dozen rate. Only one variety may be used to secure the dozen rate. We supply good healthy bulbs of large size that will give strong spikes of bloom.

ALBATROSS—Large pure white, lily shaped flowers. Tall spikes. Each 5c	Doz.	.50
ALLADIN—Huge, ruffled, dark salmon. Each 15c		1.50
ALLEMANIA—New. Giant spikes and huge blooms of brilliant red. Each 10c		.75
ARABELLA—Giant black red. Each 15c		1.50
BAGDAD—Extra large, smoky rose. Each 5c		.50
BEACON—Bright, salmon red, cream blotch. Each 10c		.75
BETTY NUTHALL—Giant blooms. Glowing orange pink with light yellow throat. Each 5c		.50
BIT O'HEAVEN—Tall coppery orange. Many open at once. Each 10c		.75
BLEEDING HEART—White tinted pink; striking red blotch. Each 5c		.50
BLUE BEAUTY—Early. Best violet blue. Each 15c		1.50
BONNEVILLE—Ruffled, deep salmon pink. Each 5c		.50
BRIGHTSIDE—Orange and yellow. Each 5c		.50
CHARLES DICKENS—Tall, red purple. One of the best. Each 5c		.50
CHIEF MULTNOMAH—Huge, smoky red. Each 15c		1.50
COMMANDER KOEHL—Immense dark scarlet. 2 for 15c		.60
D. A. HAY—A champion pink and cream. Each 5c		.50
DEBONAIR—La France pink, cream throat. Very fine. Each 5c		.50
DREAM OF BEAUTY—Rose red. A prizewinner. Each 10c		.75
DR. F. E. BENNETT—Fine scarlet. Large flower, tall spikes. Each 5c		.50
GATE OF HEAVEN—Wonderful, ruffled, clear, deep yellow. Each 5c		.50
GIANT NYMPH—Large, light salmon rose. One of the best pinks. Each 5c		.50
GOLDEN GODDESS (Salbach—Patented)—Rich, golden yellow. Each 10c; 3 for 25c; 6 for 45c		.75
GRAND OPERA (Salbach—Patented)—Between La France and Geranium pink. Very soft, but clear in tone. Large bulbs, each 50c; 3 for \$1.25		
GREENLIGHT—Large white with a greenish cast. Each 30c	3.00	
JOHANN S. BACH—Exhibition salmon red. Each 10c		.75
KEWPIE—Miniature. Extra fine scarlet. Each 10c		.75
MARGARET BEATON—Snow white with small cherry red blotch. Each 25c		2.50
MILFORD—A better "Heavenly Blue." Very fine. 2 for 15c		.60
MINUET—Finest light lavender. Large flowers on tall erect spike. Each 5c		.50
MOORISH KING—Large, fine leather-like maroon flowers. Each 10c		.75
MOTHER MACHREE—Smoky salmon blended with lavender and gold. 2 for 15c		.60
MR. WM. CUTHBERTSON—Ruffled, cherry pink. Each 5c		.50
NEW ERA—New. Ruffled, pure pink. Very beautiful leathery flowers. Each 15c		1.50
PELEGRINA—Large deep blue. The best dark blue to date. Each 5c		.50
PFITZER'S TRIUMPH—Immense blooms of salmon orange with deep salmon red blotch. Each 5c		.50
PICARDY—Immense blooms of soft shrimp pink. A wonderful flower. Each 5c		.50
RAMESES—Giant blooms. Deep aster purple. Each 15c		1.50
RED PHIPPS—Pure scarlet. 2 for 15c		.60
RIMA—Wonderful light lavender pink. Each 20c		2.00
ROSE MARIE PFITZER—Ruffled flowers of light cream tinted pink. Large spikes. 2 for 15c		.60
SALBACH'S ORCHID—Lavender pink. Excellent for forcing. Each 5c		.50
SENORITA—Ruffled, yellow edged red. 2 for 15c		.60
SHIRLEY TEMPLE—Beautiful light cream with deeper cream throat. Each 10c		.75
SMILING MAESTRO—Large smoky salmon pink. 2 for 15c		.60
SNOW PRINCESS—New. Exhibition white. Each 15c		1.50
STAR OF BETHLEHEM—Fine exhibition white. 2 for 15c		.60
VAGABOND PRINCE—Bronze red, orange blotch. Each 10c		.75
WASAGA—(Prim. Grand) Clear golden buff, somewhat ruffled. Each 5c		.50
W. H. PHIPPS—Beautiful salmon pink. Lower petals slightly flecked. Each 5c		.50
WUERTEMBERGIA—Dazzling fiery scarlet with cream throat. Each 5c		.50
YELLOW PERFECTION—Early. Best pure yellow. Each 5c		.50

GLADIOLUS IN MIXTURE

GILL'S FANCY MIXTURE—A very high grade mixture, mixed from named sorts	Doz.	100
FLORIST MIXTURE—A very good mixture of various colors, well worth the price	\$.50	\$3.50
PRIMULINUS MIXTURE—Rare shades of rich yellow, rose, salmon, scarlet, etc.	.25	1.75
	.40	2.50

GLORIOUS GLADIOLUS OFFER

90 medium size bulbs. 1 to 1½ inches in diameter, in splendid mixture, postpaid, for \$1.00. 45 medium size bulbs, 60c. These will make fine blooms the first season. You will be surprised at the value you receive. This offer enables everyone to have a fine gladiolus garden. Wonderful value.

FLORIST GLADIOLUS OFFER

55 large size bulbs, 1½ inches up, in a fine mixture, postpaid, for \$1.00. 28 large size bulbs, 60c. This mixture is made from named standard sorts and newer introductions unlabeled and comprises large flowering varieties with good cut flower qualities, chosen so as to make a good range of colors. Our selection of varieties.

MONTBRETIA

YELLOW and BRONZE MIXED—Large, fine quality bulbs	Doz.	\$.25
---	------	--------

RADIO GARDEN TALKS BY RAY W. GILL

Will be given over stations KGW, Portland; KOMO, Seattle; KHQ, Spokane; KIDO, Boise, on Sunday afternoons beginning February 1st and continuing during February, March and April. Watch the Radio programs and newspapers for further information.

OUR BARGAIN COUNTER

We offer this page of real bargains with the idea of encouraging a trial of our various lines, and we assure all that these are not makeshift bargains to unload worthless stock, but are genuine offers of the same standard of goods with which we supply our regular trade. All of the goods offered are for prompt delivery, weather conditions being favorable. Dahlias will be sent in April. All prices are postpaid.

FREE PREMIUM ON EARLY ORDERS BEFORE FEBRUARY 20, 1942

On all orders, amounting to \$1.00 or more, received by us before February 20, 1942 (no later), we will include free, your choice of either 10 gladiolus bulbs of our selection or our selection of 3 packets of flower seed. The selection of varieties for this offer must be left to us. Order today, don't put it off or you may be too late. Besides getting the early premium we can give you better service if your order comes before the spring rush.

GILL'S DAHLIA COLLECTIONS

Since it is impossible for us to gauge the amount of sales upon any variety in advance, we often have a surplus of dahlias left in very good sorts. This enables us to make the remarkably low rates on collections given below. These bulbs will be labeled with their correct name and no two alike, chosen with regard to color; however, they must be entirely our own selection. Prices are postpaid.

- No. 1—12 CACTUS DAHLIAS, good standard sorts, \$1.75; six for \$1.00.
- No. 2—6 PEONY DAHLIAS, for \$1.00.
- No. 3—12 DECORATIVE, \$1.75; six for \$1.00.
- No. 4—12 SHOW DAHLIAS, \$1.50; six for 90c.
- No. 5—6 SINGLE DAHLIAS for \$1.00.
- No. 6—8 POMPON DAHLIAS for \$1.00.
- No. 7—STANDARD DAHLIAS, in main classes, including Cactus, Decorative, Peony and Show, twelve for \$1.65; six for \$1.00.

"BIG FOUR" DAHLIA COLLECTION

Four outstanding dahlias, all fine varieties, worth \$1.70, sent postpaid for \$1.25. (Save 45c).

- CHAMPOEG, F. D. Canary yellow, shaded bright peach red.....50
 - JANE COWL, I. D. Bronze buff and old gold.....35
 - MISSION BELLE, F. D. Immense, old rose and pale lavender.....35
 - MRS. GEO. LE BOUTILLIER, I. D. Immense, rich velvety carmine.....50
- \$1.70

MINIATURE DAHLIA COLLECTION

Five dahlias with very small flowers, but in same classes as the large dahlias, all excellent for cutting and worth \$1.65, postpaid for \$1.00. (Save 65c).

- BABY ROYAL, F. D. Salmon pink and gold.....35
 - ELIZABETH PAPE, C. Rosy salmon pink, lighter tips.....35
 - MARQUITA, F. D. Light pink.....25
 - PETER, C. Yellow, suffused and tipped red.....35
 - ROSE GEM, F. D. Rose pink, tinged lavender.....35
- \$1.65

BEAUTIFUL YARD COLLECTION

Twelve dahlias, all fine varieties, worth \$4.40, postpaid for \$2.50. (Save \$1.90).

- DR. GEO. SKINNER, P. Deep red, usually tipped white.....35
 - ENCHANTING, S. C. Rich, rosy salmon, golden center.....35
 - HUBERT ROY STOVEL, I. D. Rich, golden yellow.....35
 - J. K. ALEXANDER, JR., I. D. Immense crimson, yellow fleck in center.....50
 - MARY ELLEN, F. D. Violet rose, more pink than lavender.....35
 - MARYLAND ORANGE, S. C. Orange, shaded red.....35
 - MOLALLA, S. Fine yellow, tipped white.....25
 - MR. CROWLEY, F. D. Exquisite salmon pink.....35
 - MRS. EDNA B. CHAMPLIN, F. D. Deep rhodamine pink.....50
 - MYRA HOWARD, I. D. Yellow, tinted salmon.....35
 - SUMMER GIRL, F. D. Large, light lemon yellow.....35
 - VALENTINO, F. D. Beautiful salmon pink.....35
- \$4.40

CUT FLOWER DAHLIA COLLECTION

Twelve special cut flower sorts, worth \$4.50, postpaid for \$2.75. All have fine stems, bloom freely and last well when cut. We use these for our cut flower trade. (Save \$1.75).

- AMUN RA, F. D. Copper and orange.....35
- COLUMBINE, C. Soft shades of lavender, rose and yellow.....35
- DELICE, F. D. Beautiful, glowing, soft rose.....35
- DIXIE RAVENSCROFT, I. D. Bright flame color, gold reverse.....35
- FRANK MILLER, F. D. Picric yellow.....35
- JERSEY BEAUTY, F. D. Beautiful, eosine pink.....35
- LA DOSKA DOWD, F. D. Clear yellow.....35
- MARJORIE BEEVOR, I. D. Beautiful orchid.....35
- MARJORIE COLE, I. D. Orange, tipped white.....35
- MONMOUTH CHAMPION, F. D. Orange-scarlet.....35
- SEASIDE BEAUTY, F. D. Rich ruby red, tips of outer petals dove color.....50
- WHITE KNIGHT, F. D. Large, snow white.....50

\$4.50

CHEERFUL GARDEN COLLECTION

8 BULBS WORTH \$2.50 FOR \$1.00 POSTPAID

We offer 8 Dahlia Bulbs, our selection of varieties, all labeled with their correct name and worth \$2.50 at regular prices. This collection made a big hit last season, our customers being surprised at the great value we gave. The collections will be made up mainly from cactus, peony and decorative types.

HOME VEGETABLE COLLECTION

Thirty-four regular sized packets, worth \$2.55 sent Postpaid for \$1.75. Positively no changes permitted.

- | (Save 80c) | Regular Price |
|---|---------------|
| BEANS, Burpee's Stringless Green Pod (Bush) | .10 |
| BEANS, Kentucky Wonder (Pole) | .10 |
| BEANS, Pencil Pod Black Wax (Bush) | .10 |
| BET, Detroit Dark Red Special | .10 |
| BROCCOLI, Green Sprouting | .10 |
| BRUSSELS SPROUTS, Long Island | .10 |
| CABBAGE, Golden Acre (Early) | .10 |
| CABBAGE, Oregon Ballhead (Late) | .10 |
| CARROT, Nantes Special (Early) | .10 |
| CARROT, Oregon Chantenay (Later) | .10 |
| CELERY CABBAGE, Paoting | .10 |
| SWEET CORN, Golden Early Market | .10 |
| SWEET CORN, Improved Golden Bantam | .10 |
| CUCUMBER, Davis Perfect (for slicing) | .05 |
| CUCUMBER, Boston Pickling (for pickling) | .05 |
| DILL, Mammoth | .05 |
| KALE, Tall Green Scotch Curled | .05 |
| LETUCE, New York No. 12 | .05 |
| MUSKMELON, Extra Early Knight | .05 |
| MUSKMELON, Hales Best Early | .05 |
| ONION, Oregon Yellow Danvers | .10 |
| PARSNIP, Success | .05 |
| PEAS, Laxton Progress (Dwarf early) | .10 |
| PEAS, Giant Stride (Dwarf late) | .10 |
| PUMPKIN, Orange Winter Luxury | .05 |
| RADISH, Sparklet White Tipped | .05 |
| RADISH, White Icicle | .05 |
| RADISH, Scarlet China (Winter) | .05 |
| RUTABAGA, Imp. Purple Top Yellow | .05 |
| SQUASH, Golden Delicious | .10 |
| SQUASH, Zucchini (Summer) | .05 |
| SPINACH, New Giant Leaf | .05 |
| TURNIP, Purple Top White Globe | .05 |
| WATERMELON, Black Seeded Ice Cream | .05 |

\$2.55



GILL BROS.

SEED CO.

1 9 4 2

*Gill's Golden
Table Queen Squash*